

ATLANTA, GEORGIA

AL-26 (FAA)

ILS PRM RWY 28 (SA CAT I)
(CLOSE PARALLEL)

25051

LOC/DME I-PKU 111.75 Chan 54 (Y)	APP CRS 275°	Rwy Idg 9000 TDZE 998 Apt Elev 1026
--	------------------------	--

HARTSFIELD/JACKSON ATLANTA INTL (ATL)

RNAV 1-GPS or RADAR required for procedure entry.
From TERII: RNAV 1-GPS required. DME or RADAR required.

T Simultaneous approach authorized. Use of FD or AP required during simultaneous operations. Dual VHF comm required. See additional requirements on AAUP. Requires specific OPSPEC, MSPEC, or LOA approval.

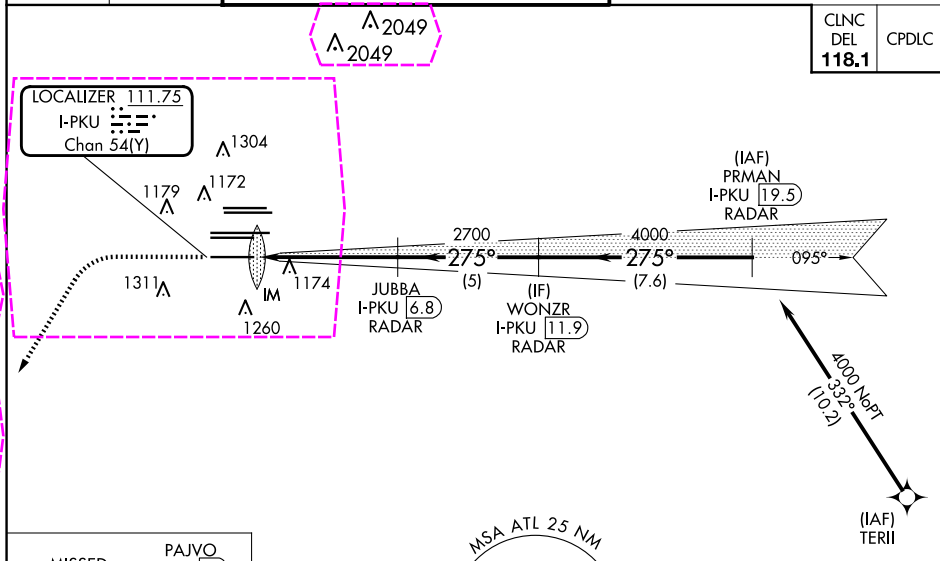
ALSF-2



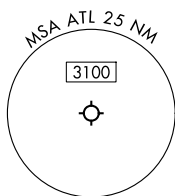
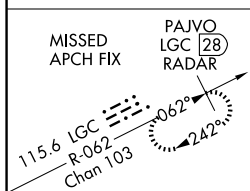
MISSED APPROACH: Climb to 1500 then climbing left turn to 3000 on heading 216° and LGC VORTAC R-062 to PAJVO/LGC 28 DME/RADAR and hold.

D-ATIS	ATLANTA	ATLANTA TOWER					ALL	GND CON			ALL
ARR 119.65	APP CON	8L-26R	8R-26L	9L-27R	9R-27L	10-28	RWYS	(8L-26R,8R-26L)	(9L-27R,9R-27L)	10-28	RWYS
DEP 125.55	127.9 379.9	119.1	125.325	123.85	119.3	119.5	254.4	121.9	121.75	121.65	254.4
		PRM 133.425									

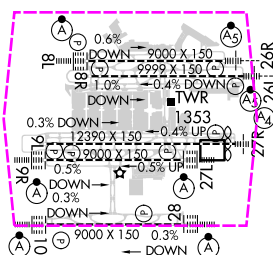
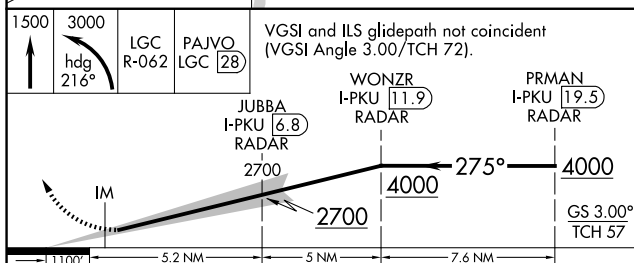
CLNC DEL 118.1	CPDLC
-----------------------------	-------



SE-4, 10 JUL 2025 to 07 AUG 2025



ELEV	1026	D	TDZE	998
------	------	----------	------	-----



HIRL all Rwy's
TDZ/CL Rwy's 8L, 9R,
10, 26R, 27L and 28

SA CATE
& AIRC
ATLANTA, GEORGIA
Amdt 5 07OCT21

33°38'N-84°26'W

HARTSFIELD/JACKSON ATLANTA INTL (ATL)

ILS PRM RWY 28 (SA CAT I) (CLOSE PARALLEL)

ATLANTA, GEORGIA

AL-26 (FAA)

25219

ILS PRM RWY 28 (SA CAT I)

(CLOSE PARALLEL)

HARTSFIELD/JACKSON ATLANTA INTL (ATL)

LOC/DME I-PKU	APP CRS	Rwy Ldg	9000
111.75	275°	TDZE	998
Chan 54(Y)		Apt Elev	1026

RNAV 1-GPS or RADAR required for procedure entry.
From TERII: RNAV 1-GPS required. DME or RADAR required.

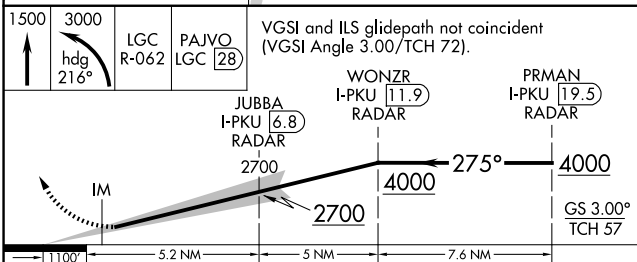
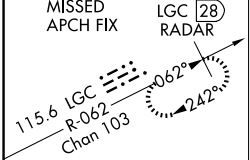
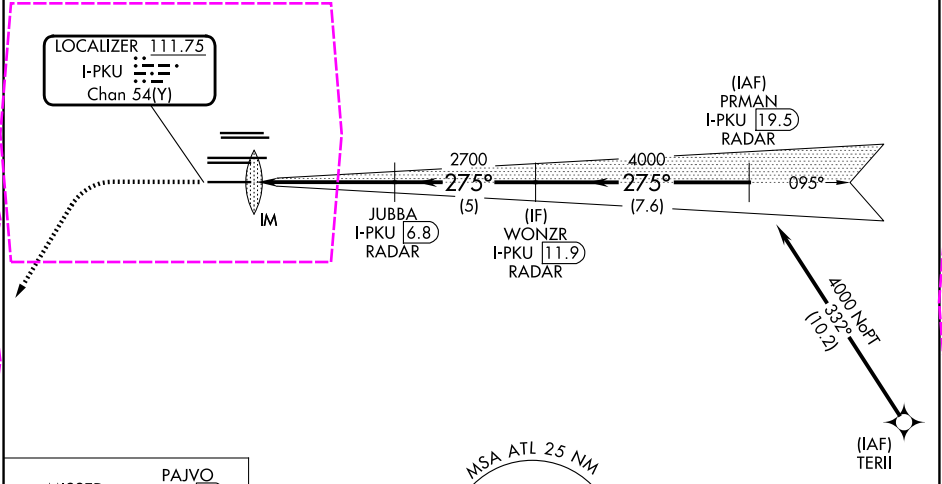
Simultaneous approach authorized. Use of FD or AP required during simultaneous operations. Dual VHF comm required. See additional requirements on AAUP. Requires specific OPSPEC, MSPEC, or LOA approval.

ALSF-2

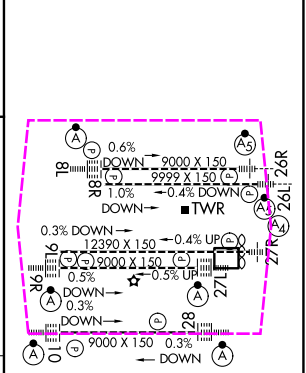
MISSED APPROACH: Climb to 1500 then climbing left turn to 3000 on heading 216° and LGC VORTAC R-062 to PAJVO/LGC 28 DME/RADAR and hold.

D-ATIS	ATLANTA APP CON	ATLANTA TOWER	ALL RWYS	GND CON	ALL RWYS
ARR 119.65	127.9 379.9	8L-26R 8R-26L 9L-27R 9R-27L 10-28	119.1 125.325 123.85 119.3 119.5 254.4	121.9	121.75 121.65 254.4
DEP 125.55		PRM 133.425			

CLNC DEL	CPDLC
118.1	



ELEV 1026	TDZE 998
-----------	----------



CATEGORY	A	B	C	D
S-ILS 28	RA 264/14	150 DA 1148		

SA CATEGORY I ILS - SPECIAL AIRCREW & AIRCRAFT CERTIFICATION REQUIRED

HIRL all Rwy's
TDZ/CL Rwy's 8L, 9R,
10, 26R, 27L and 28

ATLANTA, GEORGIA
Amdt 5 07OCT21

33°38'N-84°26'W

HARTSFIELD/JACKSON ATLANTA INTL (ATL)

ILS PRM RWY 28 (SA CAT I) (CLOSE PARALLEL)

SE-4, 07 AUG 2025 to 04 SEP 2025

SE-4, 07 AUG 2025 to 04 SEP 2025