

ATLANTA, GEORGIA

AL-26 (FAA)

ILS PRM RWY 28 (CAT II)
(CLOSE PARALLEL)

25219

LOC/DME I-PKU 111.75 Chan 54 (Y)	APP CRS 275°	Rwy Ldg TDZE Apt Elev	9000 998 1026
--	------------------------	-----------------------------	--

HARTSFIELD/JACKSON ATLANTA INTL (ATL)

RNAV 1-GPS or RADAR required for procedure entry.
From TERII: RNAV 1-GPS required. DME or RADAR required.

T Simultaneous approach authorized. Use of FD or AP required during simultaneous operations. Dual VHF comm required. See additional requirements on AAUP.

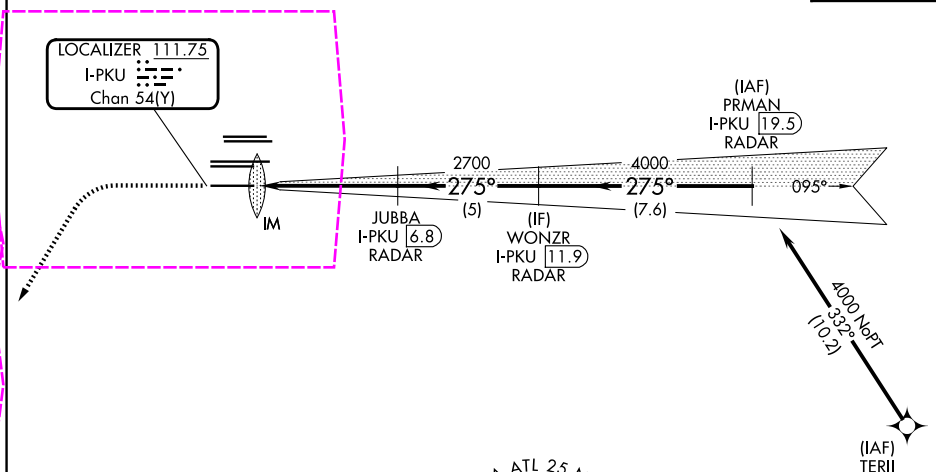
ALSF-2



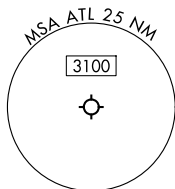
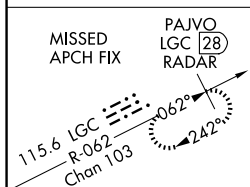
MISSED APPROACH: Climb to 1500 then climbing left turn to 3000 on heading 216° and LGC VORTAC R-062 to PAJVO/LGC 28 DME/RADAR and hold.

D-ATIS	ATLANTA	ATLANTA TOWER						ALL	GND CON				ALL
ARR 119.65	APP CON	8L-26R	8R-26L	9L-27R	9R-27L	10-28	RWYS		(8L-26R,8R-26L)	(9L-27R,9R-27L)	10-28	RWYS	
DEP 125.55	127.9 379.9	119.1	125.325	123.85	119.3	119.5	254.4		121.9	121.75	121.65	254.4	
		PRM 133.425											

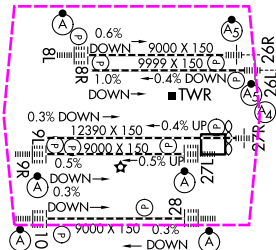
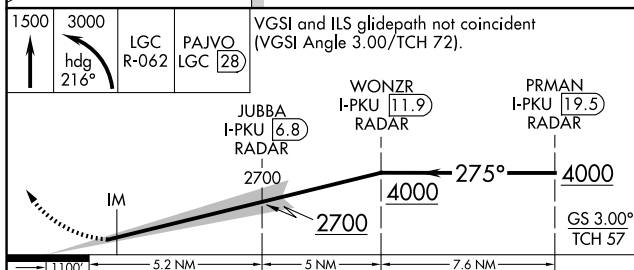
CLNC DEL 118.1	CPDLC
-----------------------------	-------



SE-4, 07 AUG 2025 to 04 SEP 2025



ELEV	1026	D	TDZE	998
------	------	----------	------	-----



CATEGORY	A	B	C	D
S-ILS 28	RA 188/12 100 DA 1098			

CATEGORY II ILS - SPECIAL AIRCREW
& AIRCRAFT CERTIFICATION REQUIRED

HIRL all Rwy's
TDZ/CL Rwy's 8L, 9R,
10, 26R, 27L and 28

ATLANTA, GEORGIA

33°38'N-84°26'W

HARTSFIELD/JACKSON ATLANTA INTL (ATL)

Amdt 5 07OCT21

ILS PRM RWY 28 (CAT II) (CLOSE PARALLEL)