

SE-4, 10 JUL 2025 to 07 AUG 2025

ATLANTA, GEORGIA

AL-26 (FAA)

25219

# ILS PRM RWY 27L

(CLOSE PARALLEL)

HARTSFIELD/JACKSON ATLANTA INTL (ATL)

LOC/DME I-FSQ <b>108.5</b> Chan <b>22</b>	APP CRS <b>275°</b>	Rwy Ldg TDZE <b>999</b> Apt Elev <b>1026</b>
---	------------------------	--

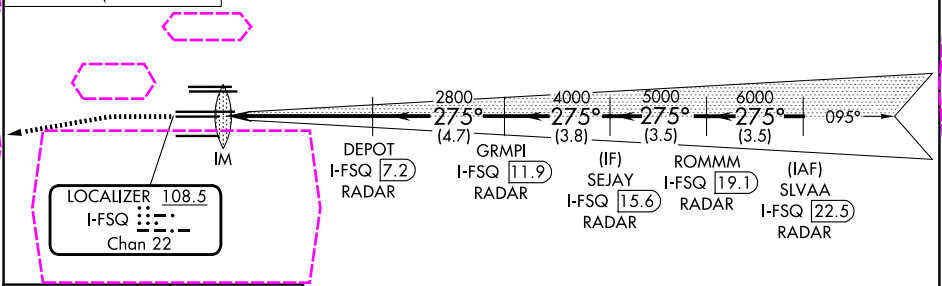
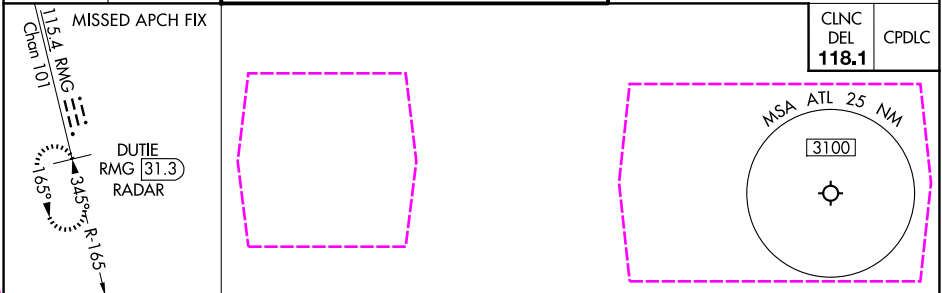
RADAR required for procedure entry.  
DME or RADAR required.

Simultaneous approach authorized. Use of FD or AP required during simultaneous operations. Dual VHF comm required. See additional requirements on AAUP.

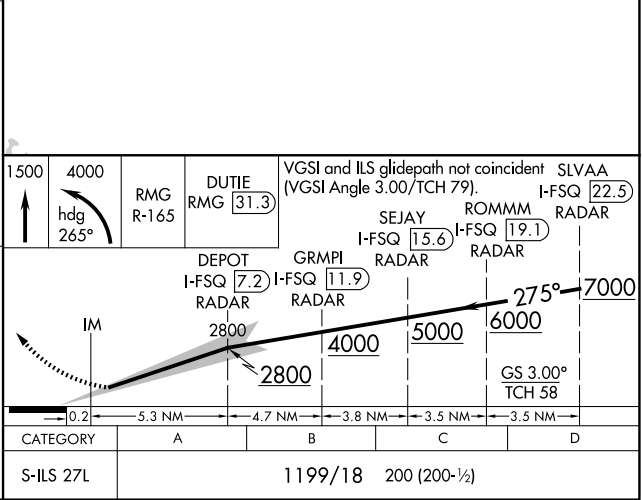
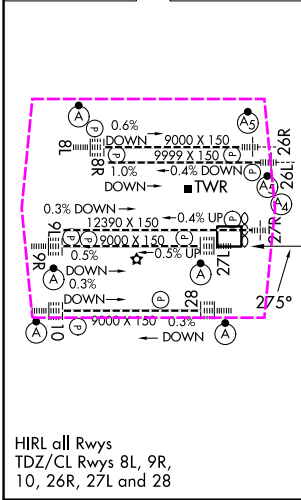
ALS-F-2

MISSED APPROACH: Climb to 1500 then climbing left turn to 4000 on heading 265° and RMG VORTAC R-165 to DUTIE/RMG 31.3 DME/RADAR and hold.

D-ATIS ARR <b>119.65</b> DEP <b>125.55</b>	ATLANTA APP CON <b>127.9 379.9</b>	ATLANTA TOWER 8L-26R 8R-26L 9L-27R 9R-27L 10-28 RWYS <b>119.1 125.325 123.85 119.3 119.5 254.4</b> <b>PRM 132.55</b>	ALL RWYS <b>121.9 121.75 121.65 254.4</b>
--	--	---	---



ELEV 1026 TDZE 999



ATLANTA, GEORGIA  
Amdt 4 22APR21

33°38'N-84°26'W

HARTSFIELD/JACKSON ATLANTA INTL (ATL)  
ILS PRM RWY 27L (CLOSE PARALLEL)

SE-4, 07 AUG 2025 to 04 SEP 2025

SE-4, 07 AUG 2025 to 04 SEP 2025