

ATLANTA, GEORGIA

AL-26 (FAA)

25051

# ILS PRM RWY 27L (CAT II)

(CLOSE PARALLEL)

## HARTSFIELD/JACKSON ATLANTA INTL (ATL)

LOC/DME I-FSQ	APP CRS	Rwy Idg	8865
<b>108.5</b>	<b>275°</b>	TDZE	<b>999</b>
Chan <b>22</b>		Apt Elev	<b>1026</b>

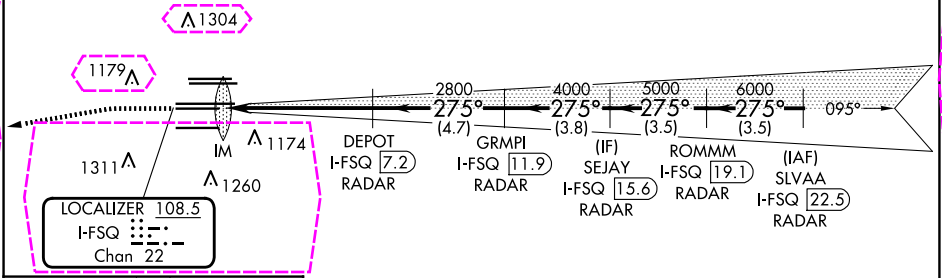
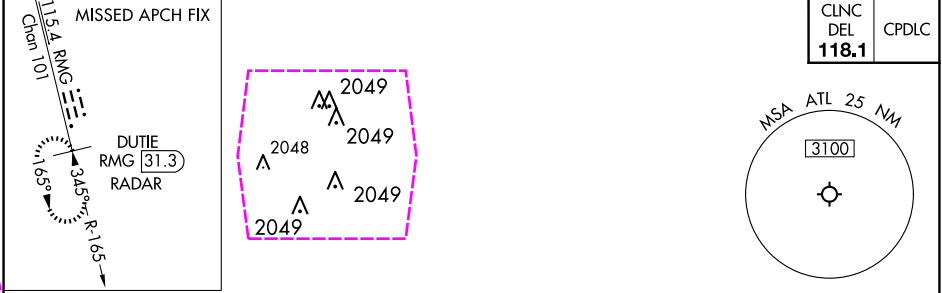
RADAR required for procedure entry. DME or RADAR required.

Simultaneous approach authorized. Use of FD or AP required during simultaneous operations. Dual VHF comm required. See additional requirements on AAUP.

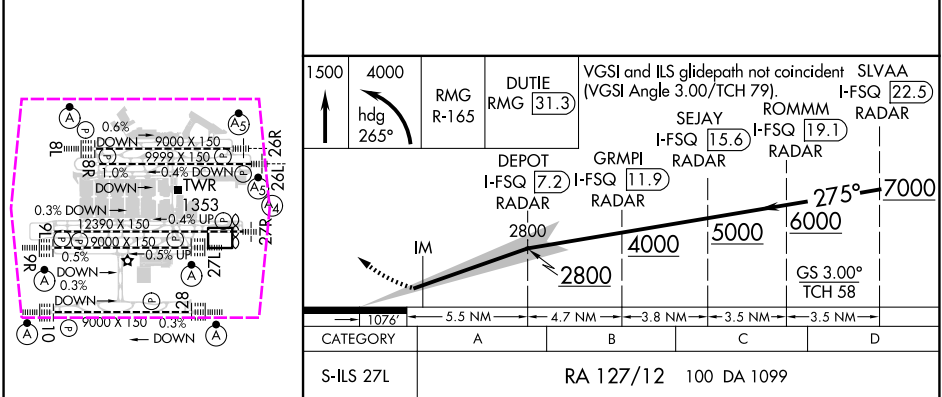
ALSIF-2

MISSED APPROACH: Climb to 1500 then climbing left turn to 4000 on heading 265° and RMG VORTAC R-165 to DUTIE/RMG 31.3 DME/RADAR and hold.

D-ATIS	ATLANTA APP CON	ATLANTA TOWER	ALL RWYS	GND CON	ALL RWYS
ARR <b>119.65</b>	<b>127.9 379.9</b>	8L-26R 8R-26L 9L-27R 9R-27L 10-28 <b>119.1 125.325 123.85 119.3 119.5 254.4</b>	(8L-26R, 8R-26L) (9L-27R, 9R-27L) 10-28	<b>121.9 121.75 121.65 254.4</b>	
<b>125.55</b>		<b>PRM 132.55</b>			



ELEV <b>1026</b>	<b>D</b>	TDZE <b>999</b>
------------------	----------	-----------------



HIRL all Rws TDZ/CL Rws 8L, 9R, 10, 26R, 27L and 28

**CATEGORY II ILS- SPECIAL AIRCREW & AIRCRAFT CERTIFICATION REQUIRED**

ATLANTA, GEORGIA

AL-26 (FAA)

25219  
ILS PRM RWY 27L (CAT II)

(CLOSE PARALLEL)

HARTSFIELD/JACKSON ATLANTA INTL (ATL)

LOC/DME I-FSQ <b>108.5</b> Chan <b>22</b>	APP CRS <b>275°</b>	Rwy Ldg TDZE <b>999</b> Apt Elev <b>1026</b>
---	------------------------	--

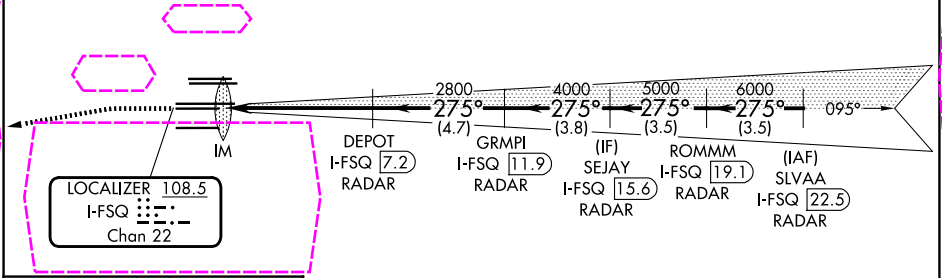
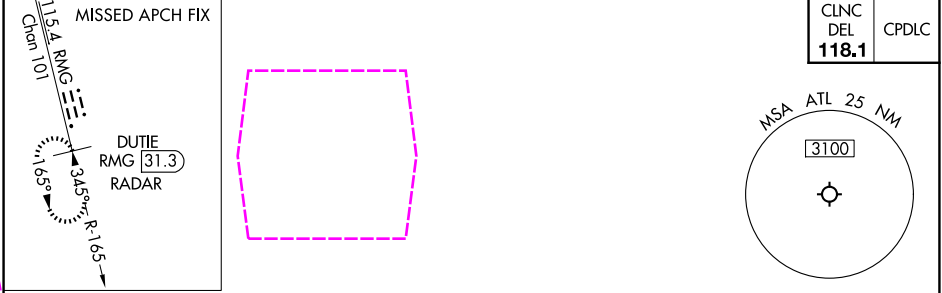
RADAR required for procedure entry. DME or RADAR required.

Simultaneous approach authorized. Use of FD or AP required during simultaneous operations. Dual VHF comm required. See additional requirements on AAUP.

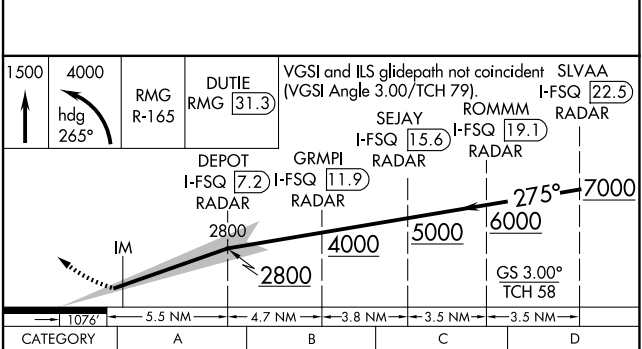
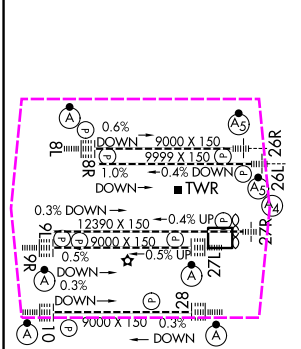
ALSF-2

MISSED APPROACH: Climb to 1500 then climbing left turn to 4000 on heading 265° and RMG VORTAC R-165 to DUTIE/RMG 31.3 DME/RADAR and hold.

D-ATIS ARR <b>119.65</b> <b>125.55</b>	ATLANTA APP CON <b>127.9 379.9</b>	ATLANTA TOWER 8L-26R 8R-26L 9L-27R 9R-27L 10-28 RWYS <b>119.1 125.325 123.85 119.3 119.5 254.4</b> <b>PRM 132.55</b>	ALL RWYS (8L-26R, 8R-26L) (9L-27R, 9R-27L) 10-28 <b>121.9 121.75 121.65 254.4</b>
--	--	---	--



ELEV <b>1026</b>	<b>D</b>	TDZE <b>999</b>
------------------	----------	-----------------



CATEGORY	A	B	C	D
S-ILS 27L	RA 127/12 100 DA 1099			

CATEGORY II ILS- SPECIAL AIRCREW & AIRCRAFT CERTIFICATION REQUIRED

ATLANTA, GEORGIA  
Amdt 4 22APR21

33°38'N-84°26'W HARTSFIELD/JACKSON ATLANTA INTL (ATL)  
ILS PRM RWY 27L (CAT II) (CLOSE PARALLEL)

SE-4, 07 AUG 2025 to 04 SEP 2025

SE-4, 07 AUG 2025 to 04 SEP 2025