

ATLANTA, GEORGIA

AL-26 (FAA)

ILS PRM RWY 10 (CLOSE PARALLEL)

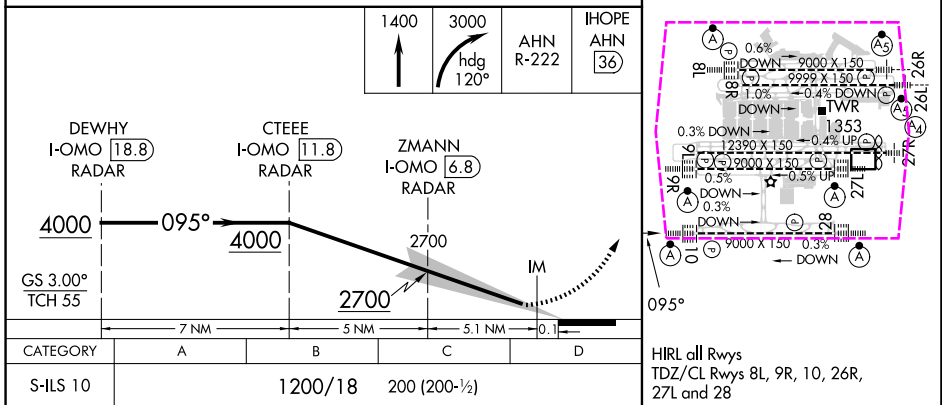
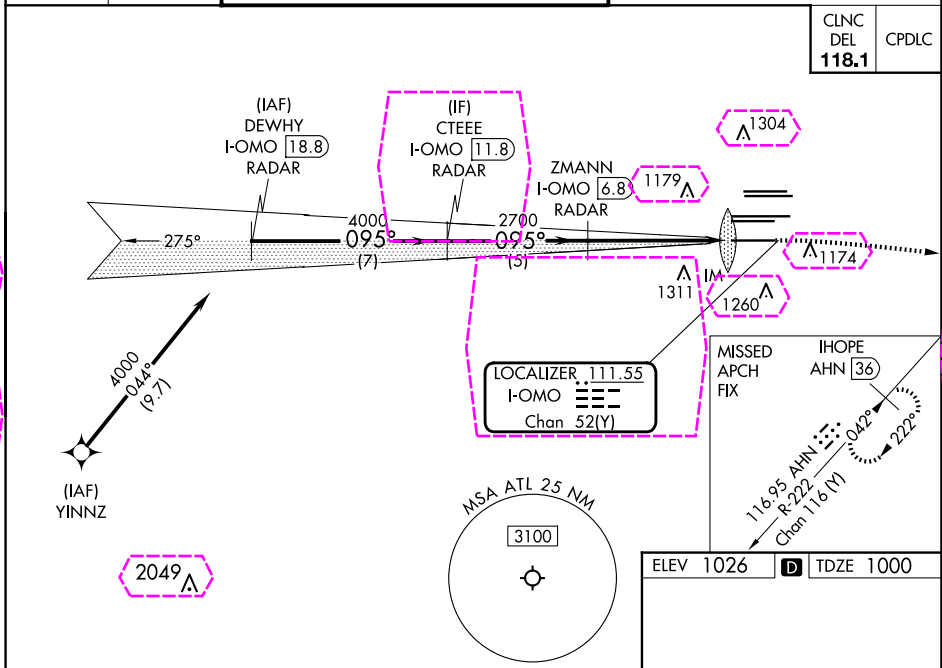
LOC/DME I-OMO 111.55 Chan 52 (Y)	APP CRS 095°	Rwy Idg TDZE 1000 Apt Elev 1026
--	------------------------	---

HARTSFIELD/JACKSON ATLANTA INTL (ATL)

DME or RADAR required. RNP APCH - GPS from YINNZ.	ALSF-2 	MISSED APPROACH: Climb to 1400 then climbing right turn to 3000 on heading 120° and AHN R-222 to IHOPE/AHN 36 DME and hold.
Simultaneous approach authorized. Procedure NA when glide slope not available (ILS procedures only). Dual VHF Comm required. See additional requirements on AAUP. Localizer not suitable for electronic rollout guidance.		

D-ATIS ARR 119.65 DEP 125.55	ATLANTA APP CON 127.9 379.9	ATLANTA TOWER 8L-26R 8R-26L 9L-27R 9R-27L 10-28 RWYS 119.1 125.325 123.85 119.3 119.5 254.4 PRM 133.425	ALL RWYS 121.9 121.75 121.65 254.4	GND CON (8L-26R,8R-26L) (9L-27R,9R-27L) 10-28 RWYS 121.9 121.75 121.65 254.4
--	--	--	---	---

CLNC DEL 118.1	CPDLC
-----------------------------	-------



ATLANTA, GEORGIA
Amdt 5 30DEC21

33°38'N-84°26'W

HARTSFIELD/JACKSON ATLANTA INTL (ATL)

ILS PRM RWY 10 (CLOSE PARALLEL)

ILS PRM RWY 10
(CLOSE PARALLEL)

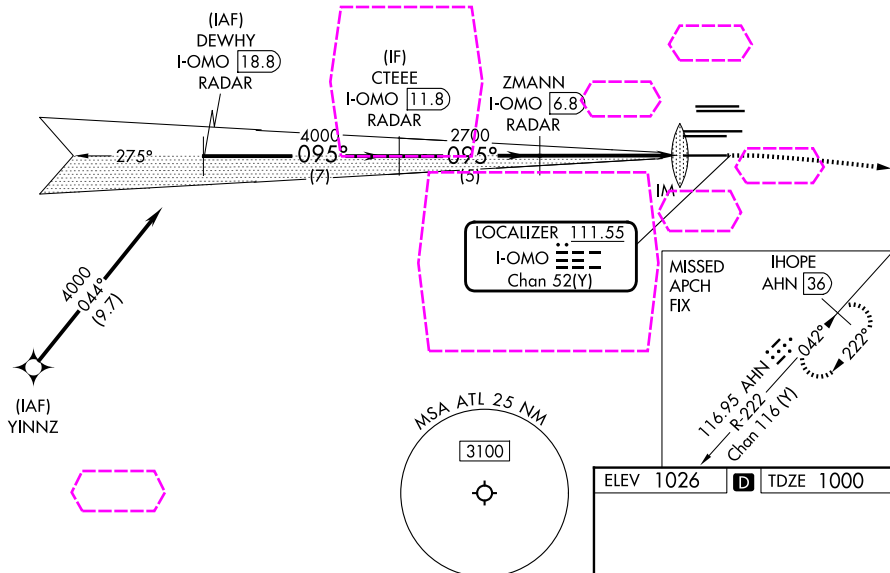
HARTSFIELD/JACKSON ATLANTA INTL (ATL)

ALSF-2

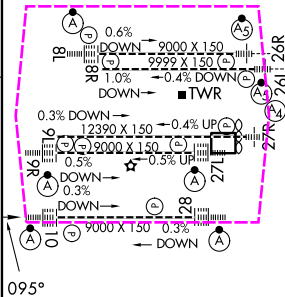
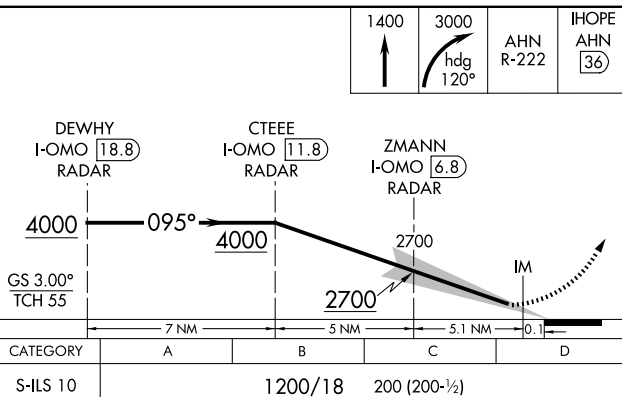
MISSED APPROACH: Climb to 1400 then climbing right turn to 3000 on heading 120° and AHN R-222 to JHOPE/AHN 36 DME and hold.

D-ATIS	ATLANTA	ATLANTA TOWER						ALL					
ARR 119.65	APP CON	8L-26R	8R-26L	9L-27R	9R-27L	10-28	RWYS	(8L-26R,8R-26L)	(9L-27R,9R-27L)	10-28	ALL		
DEP 125.55	127.9 379.9	119.1	125.325	123.85	119.3	119.5	254.4	121.9	121.75	121.65	254.4		
		PRM 133.425											

CLNC DEL 118.1	CPDLC
-----------------------------	-------



ELEV 1026	D	TDZE 1000
-----------	----------	-----------



HIRL all Rwys
TDZ/CL Rwys 8L, 9R, 10, 26R,
27L and 28

HARTSFIELD/JACKSON ATLANTA INTL (ATL)

ILS PRM RWY 10 (CLOSE PARALLEL)

SE-4, 07 AUG 2025 to 04 SEP 2025