

ATLANTA, GEORGIA

AL-26 (FAA)

ILS PRM RWY 10 (SA CAT I)
(CLOSE PARALLEL)

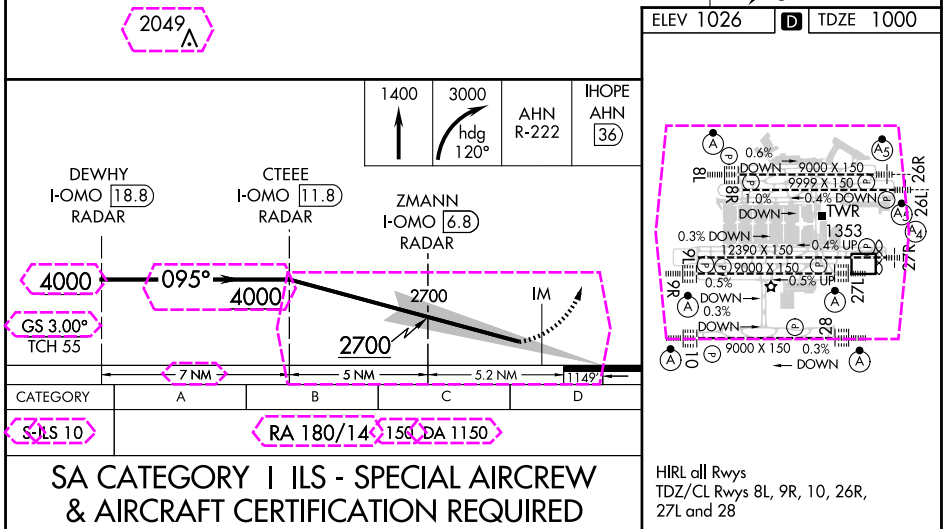
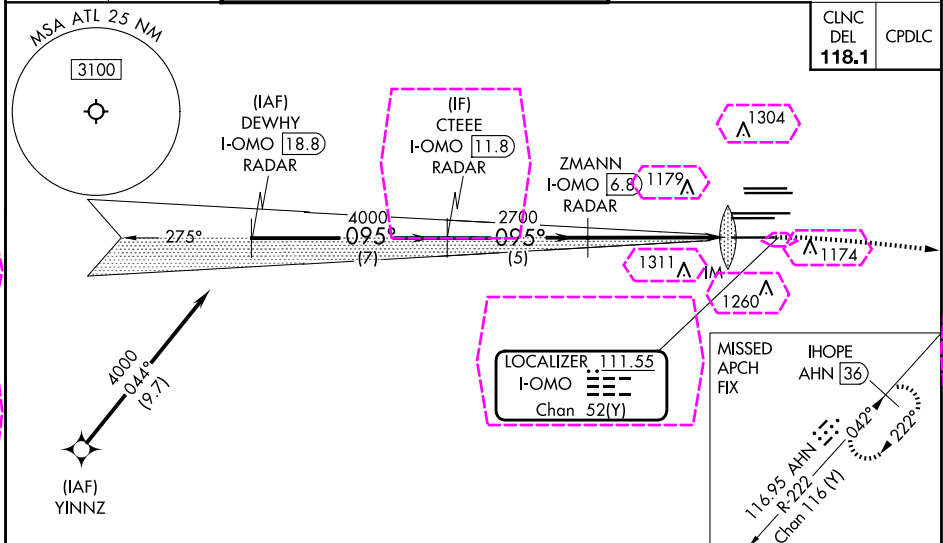
25051

LOC/DME I-OMO 111.55 Chan 52 (Y)	APP CRS 095°	Rwy Idg TDZE 1000 Apt Elev 1026
--	------------------------	---

HARTSFIELD/JACKSON ATLANTA INTL (ATL)

DME or RADAR required. RNP APCH - GPS from YINNZ.	ALSF-2 	MISSED APPROACH: Climb to 1400 then climbing right turn to 3000 on heading 120° and AHN R-222 to IHOPE/AHN 36 DME and hold.
Simultaneous approach authorized. Procedure NA when glide slope not available (ILS procedures only). Dual VHF Comm required. See additional requirements on AAUP. Requires special OPSPEC, MSPEC, or LOA approval and use of HUD to DH.		

D-ATIS ARR 119.65 DEP 125.55	ATLANTA APP CON 127.9 379.9	ATLANTA TOWER 8L-26R 8R-26L 9L-27R 9R-27L 10-28 RWYS 119.1 125.325 123.85 119.3 119.5 254.4 PRM 133.425	ALL RWYS 121.9 121.75 121.65 254.4
--	--	--	---



ATLANTA, GEORGIA
Amdt 5 30DEC21

33°38'N-84°26'W

HARTSFIELD/JACKSON ATLANTA INTL (ATL)

ILS PRM RWY 10 (SA CAT I) (CLOSE PARALLEL)

SE-4, 10 JUL 2025 to 07 AUG 2025

SE-4, 10 JUL 2025 to 07 AUG 2025

ATLANTA, GEORGIA

AL-26 (FAA)

ILS PRM RWY 10 (SA CAT I)
(CLOSE PARALLEL)

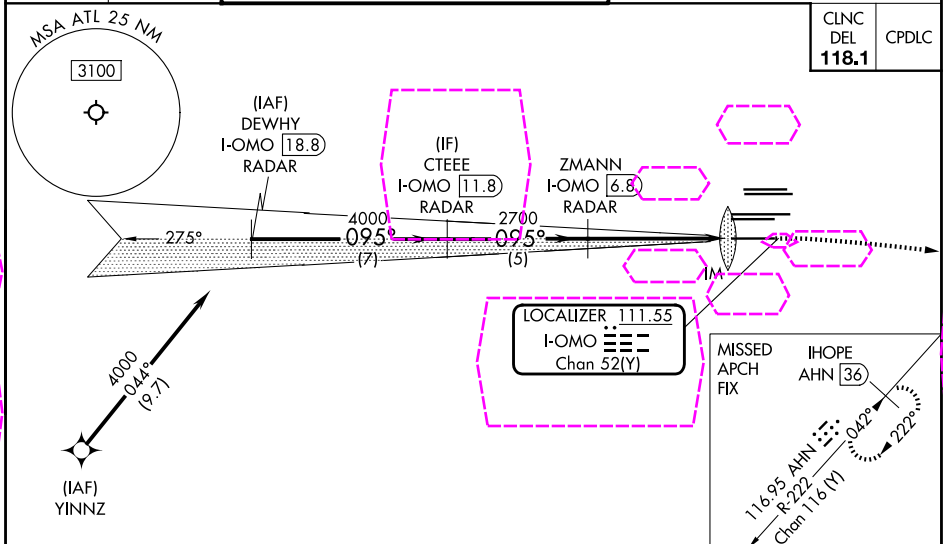
25219

LOC/DME I-OMO 111.55 Chan 52 (Y)	APP CRS 095°	Rwy Ldg TDZE 1000 Apt Elev 1026
--	------------------------	---

HARTSFIELD/JACKSON ATLANTA INTL (ATL)

DME or RADAR required. RNP APCH - GPS from YINNZN.	ALSIF-2 	MISSED APPROACH: Climb to 1400 then climbing right turn to 3000 on heading 120° and AHN R-222 to IHOPE/AHN 36 DME and hold.
Simultaneous approach authorized. Procedure NA when glide slope not available (ILS procedures only). Dual VHF Comm required. See additional requirements on AAUP. Requires special OPSPEC, MSPEC, or LOA approval and use of HUD to DH.		

D-ATIS ARR 119.65 DEP 125.55	ATLANTA APP CON 127.9 379.9	ATLANTA TOWER 8L-26R 8R-26L 9L-27R 9R-27L 10-28 RWYS 119.1 125.325 123.85 119.3 119.5 254.4 PRM 133.425	ALL RWYS 121.9 121.75 121.65 254.4
--	--	--	---



ELEV 1026				D TDZE 1000	
CATEGORY				A B C D	
S-ILS 10				RA 180/14 150 DA 1150	
SA CATEGORY I ILS - SPECIAL AIRCREW & AIRCRAFT CERTIFICATION REQUIRED					

ATLANTA, GEORGIA
Amdt 5 30DEC21

33°38'N-84°26'W HARTSFIELD/JACKSON ATLANTA INTL (ATL)
ILS PRM RWY 10 (SA CAT I) (CLOSE PARALLEL)