

LOC/DME I-OMO 111.55 Chan 52 (Y)	APP CRS 095°	Rwy Idg 9000 TDZE 1000 Apt Elev 1026
--	------------------------	---

DME or RADAR required.
RNP APCH - GPS from YINNZ.



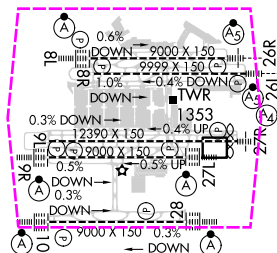
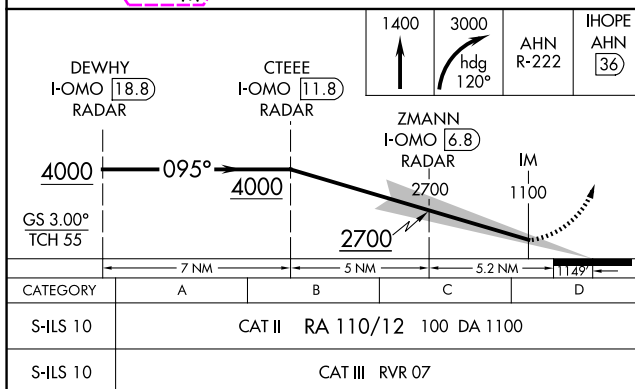
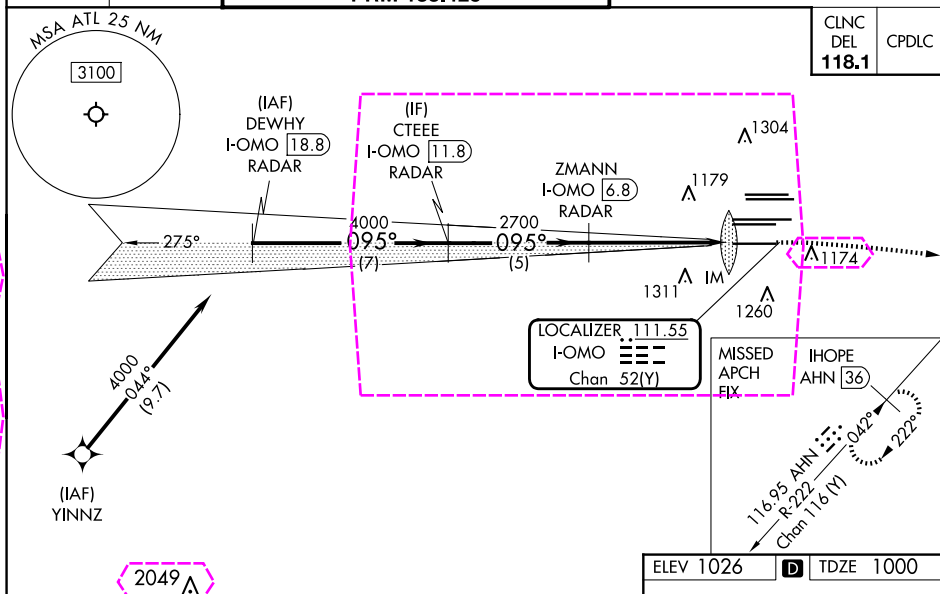
Simultaneous approach authorized. Procedure NA when glide slope not available (ILS procedures only). Dual VHF Comm required. See additional requirements on AAUP.

ALSF-2



MISSED APPROACH: Climb to 1400 then climbing right turn to 3000 on heading 120° and AHN R-222 to JHOPE/AHN 36 DME and hold.

D-ATIS	ATLANTA	ATLANTA TOWER						ALL					
ARR 119.65	APP CON	8L-26R	8R-26L	9L-27R	9R-27L	10-28	RWYS	(8L-26R,8R-26L)	(9L-27R,9R-27L)	10-28	RWYS		
DEP 125.55	127.9 379.9	119.1	125.325	123.85	119.3	119.5	254.4	121.9	121.75	121.65	254.4		
		PRM 133.425											



CATEGORY II & III ILS - SPECIAL AIRCREW
& AIRCRAFT CERTIFICATION REQUIRED

HIRL all Rwys
TDZ/CL Rwys 8L, 9R, 10, 26R,
27L and 28

SE-4, 10 JUL 2025 to 07 AUG 2025

SE-4, 10 JUL 2025 to 07 AUG 2025

ATLANTA, GEORGIA

AL-26 (FAA)

ILS PRM RWY 10 (CAT II & III)
(CLOSE PARALLEL)
HARTSFIELD/JACKSON ATLANTA INTL (ATL)

25219

LOC/DME I-OMO 111.55 Chan 52 (Y)	APP CRS 095°	Rwy Ldg TDZE 1000 Apt Elev 1026
--	------------------------	---

DME or RADAR required.
RNP APCH - GPS from YINNZ.



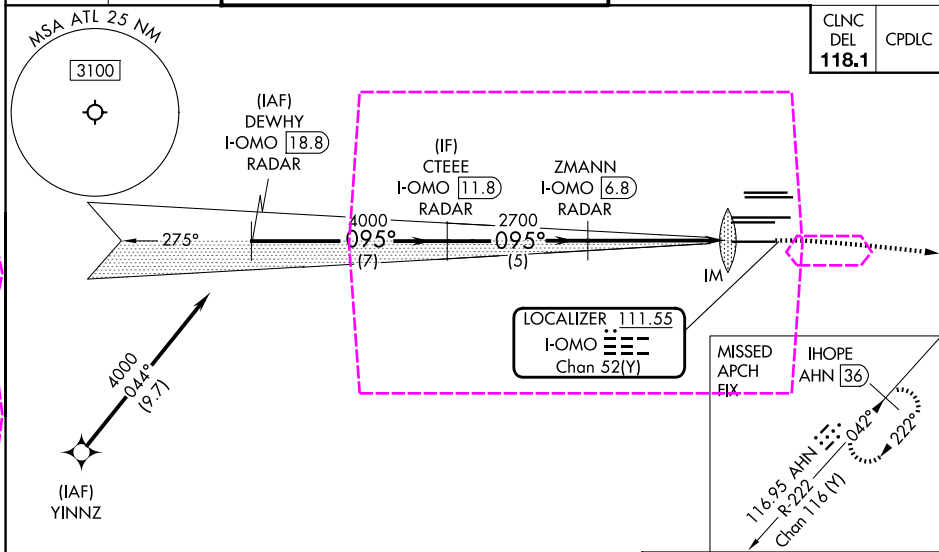
Simultaneous approach authorized. Procedure NA when glide slope not available (ILS procedures only). Dual VHF Comm required. See additional requirements on AAUP.

ALSF-2



MISSED APPROACH: Climb to 1400 then climbing right turn to 3000 on heading 120° and AHN R-222 to IHOPE/AHN 36 DME and hold.

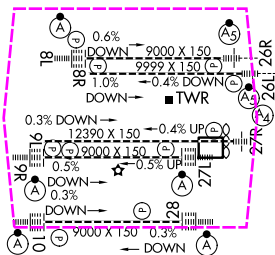
D-ATIS ARR 119.65 DEP 125.55	ATLANTA APP CON 127.9 379.9	ATLANTA TOWER 8L-26R 8R-26L 9L-27R 9R-27L 10-28 RWYS 119.1 125.325 123.85 119.3 119.5 254.4 PRM 133.425				ALL RWYS 254.4	GND CON (8L-26R, 8R-26L) (9L-27R, 9R-27L) 10-28 121.9 121.75 121.65 254.4	ALL RWYS 254.4
--	--	--	--	--	--	-----------------------------	--	-----------------------------



CINC DEL 118.1	CPDLC
-----------------------------	-------

<div>DEWHY I-OMO 18.8 RADAR</div> <div>CTEE I-OMO 11.8 RADAR</div> <div>ZMANN I-OMO 6.8 RADAR</div> <div>IM</div>					<div>1400 ↑</div> <div>3000 hdg 120°</div> <div>AHN R-222</div> <div>IHOPE AHN 36</div>
<div>4000</div> <div>095°</div> <div>4000</div> <div>2700</div> <div>1100</div> <div>GS 3.00° TCH 55</div>					
<div>7 NM</div> <div>5 NM</div> <div>5.2 NM</div> <div>11.4°</div>					
CATEGORY	A	B	C	D	
S-ILS 10	CAT II RA 110/12 100 DA 1100				
S-ILS 10	CAT III RVR 07				

CATEGORY II & III ILS - SPECIAL AIRCREW
& AIRCRAFT CERTIFICATION REQUIRED



HIRL all Rwys
TDZ/CL Rwys 8L, 9R, 10, 26R,
27L and 28

ATLANTA, GEORGIA
Amdt 5 30DEC21

33°38'N-84°26'W HARTSFIELD/JACKSON ATLANTA INTL (ATL)
ILS PRM RWY 10 (CAT II & III)(CLOSE PARALLEL)

SE-4, 07 AUG 2025 to 04 SEP 2025

SE-4, 07 AUG 2025 to 04 SEP 2025