

ATLANTA, GEORGIA

AL-26 (FAA)

25051

LOC/DME I-ATL 109.9 Chan 36	APP CRS 095°	Rwy Idg TDZE Apt Elev	8R 9999 8800 1024 1015 1026 1026
---	------------------------	-----------------------------	--

ILS or LOC RWY 8R

HARTSFIELD/JACKSON ATLANTA INTL (ATL)

RADAR required for procedure entry.
DME or RADAR required.

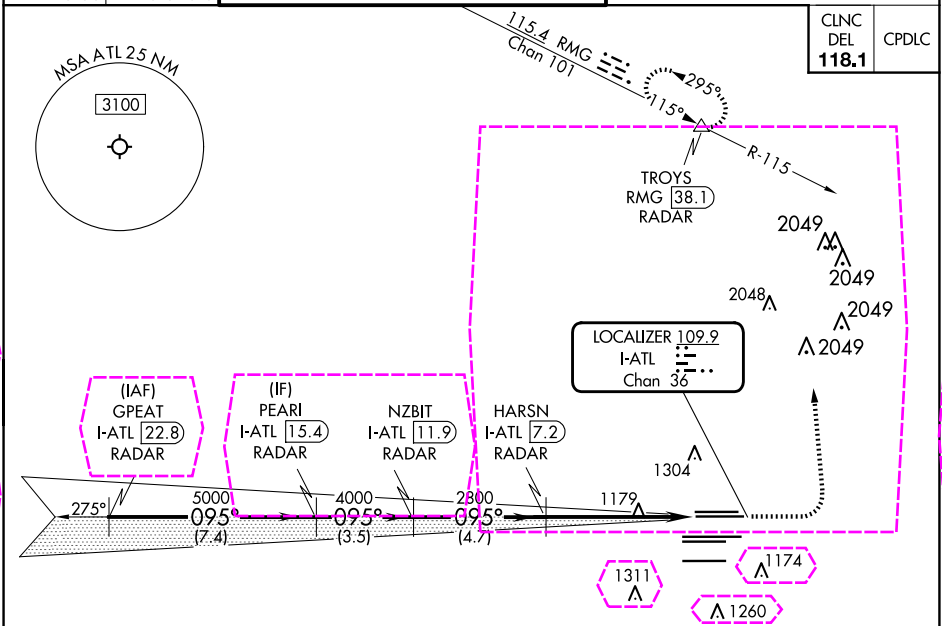
Simultaneous approach authorized. Sidestep 8L for inop ALSF-2, increase Cat E visibility to 2.



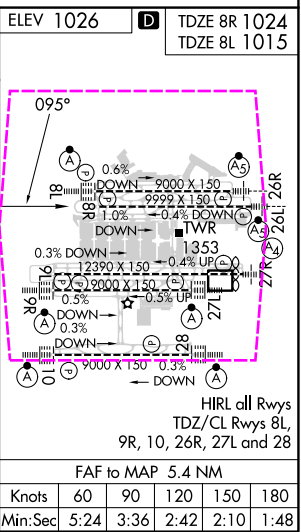
MISSED APPROACH: Climb to 1500 then climbing left turn to 3500 on heading 360° and RMG VORTAC R-115 to TROYS/RMG 38.1 DME/RADAR and hold.

D-ATIS ARR 119.65 DEP 125.55	ATLANTA APP CON 127.9 379.9	ATLANTA TOWER 8L-26R 8R-26L 9L-27R 9R-27L 10-28 RWYS 119.1 125.325 123.85 119.3 119.5 254.4	ALL RWYS (8L-26R, 8R-26L) (9L-27R, 9R-27L) 10-28 121.9 121.75 121.65 254.4	GND CON 10-28 121.65 254.4	ALL RWYS
--	--	--	---	---	-------------

CINC DEL 118.1	CPDLC
-----------------------------	-------



VGSI and ILS glidepath not coincident (VGSI Angle 3.00/TCH 67).					
GPEAT I-ATL 22.8 RADAR		PEARL I-ATL 15.4 RADAR	NZBIT I-ATL 11.9 RADAR	HARSN I-ATL 7.2 RADAR	I-ATL 2.9 I-ATL 1.8
5000		4000	2800	2800	1179
7.4 NM		3.5 NM	4.7 NM	4.3 NM	1.1 NM
CATEGORY	A	B	C	D	E
S-ILS 8R	1282/40 258 (300-¾)				
S-LOC 8R	1440/55	416 (500-1)	1440/60	416 (500-1½)	
SIDESTEP 8L	1440/55	425 (500-1)	1440/60 425 (500-1½)	1440-1½	425 (500-1½)



ATLANTA, GEORGIA
Amdt 62 22APR21

33°38'N-84°26'W

HARTSFIELD/JACKSON ATLANTA INTL (ATL)

ILS or LOC RWY 8R

SE-4, 10 JUL 2025 to 07 AUG 2025

SE-4, 10 JUL 2025 to 07 AUG 2025

ATLANTA, GEORGIA

AL-26 (FAA)

25219

LOC/DME I-ATL 109.9 Chan 36	APP CRS 095°	Rwy Ldg TDZE Apt Elev	8R 9999 8800 1024 1015 1026 1026
---	------------------------	-----------------------------	--

ILS or LOC RWY 8R

HARTSFIELD/JACKSON ATLANTA INTL (ATL)

RADAR required for procedure entry.
DME or RADAR required.

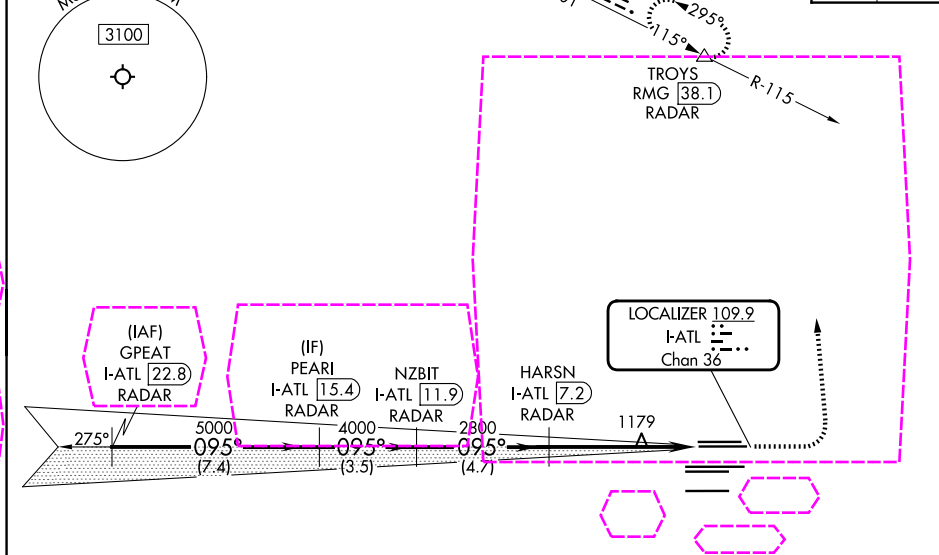
Simultaneous approach authorized. Sidestep 8L for inop ALSF-2, increase Cat E visibility to 2.

Rwy 8L
ALSF-2

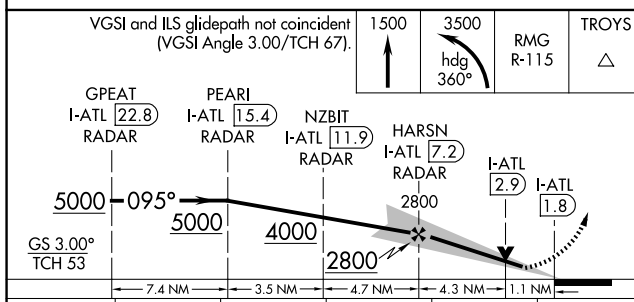
MISSED APPROACH: Climb to 1500 then climbing left turn to 3500 on heading 360° and RMG VORTAC R-115 to TROYS/RMG 38.1 DME/RADAR and hold.

D-ATIS ARR 119.65	ATLANTA APP CON 127.9 379.9	ATLANTA TOWER 8L-26R 8R-26L 9L-27R 9R-27L 10-28 RWYS 119.1 125.325 123.85 119.3 119.5 254.4	ALL RWYS 121.9	GND CON (8L-26R, 8R-26L) (9L-27R, 9R-27L) 10-28 121.75 121.65 254.4	ALL RWYS
-----------------------------	--	--	-----------------------------	--	-------------

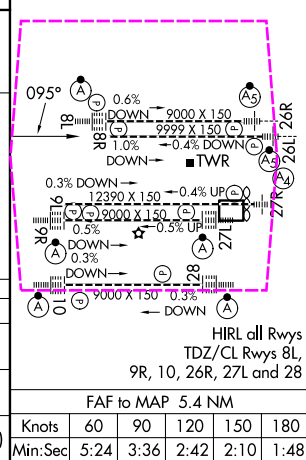
CINC DEL 118.1	CPDLC
-----------------------------	-------



ELEV 1026	TDZE 8R 1024	TDZE 8L 1015
-----------	--------------	--------------



CATEGORY	A	B	C	D	E
S-ILS 8R	1282/40 258 (300-¾)				
S-LOC 8R	1440/55	416 (500-1)	1440/60	416 (500-1½)	
SIDESTEP 8L	1440/55	425 (500-1)	1440/60 425 (500-1½)	1440-1½	425 (500-1½)



ATLANTA, GEORGIA
Amdt 62 22APR21

HARTSFIELD/JACKSON ATLANTA INTL (ATL)
33°38'N-84°26'W

ILS or LOC RWY 8R