

25051

| | | | | |
|----------------|-------------|----------|-------------|-------------|
| LOC/DME I-HFW | APP CRS | Rwy Idg | 8L | 8R |
| 109.3 | 095° | TDZE | 8800 | 9999 |
| Chan 30 | | Apt Elev | 1015 | 1024 |
| | | | 1026 | 1026 |

ILS or LOC RWY 8L
HARTSFIELD/JACKSON ATLANTA INTL (ATTN)

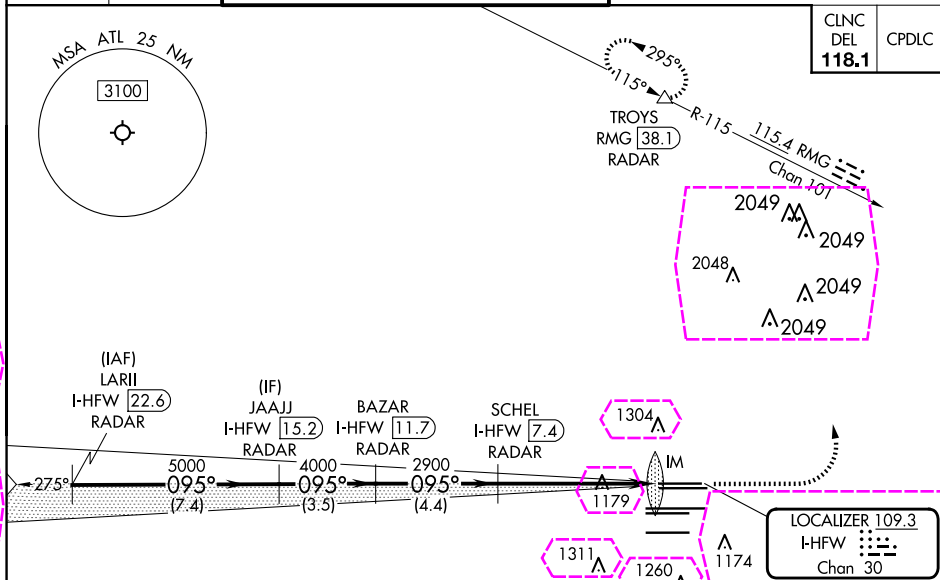
RADAR required for procedure entry. DME or RADAR required.

T Simultaneous approach authorized.
Inop table does not apply to sidestep 8R.

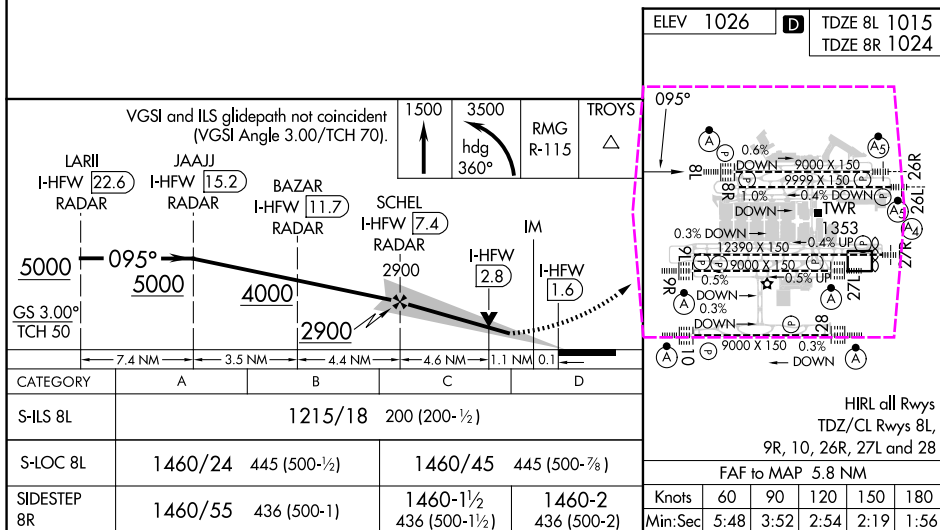
Rwy 8L
ALSF-2

MISSED APPROACH: Climb to 1500 then climbing left turn to 3500 on heading 360° and RMG VORTAC R-115 to TROYS/RMG 38.1 DME/RADAR and hold.

| | | | | | | | | | | | | | | |
|--------|---------|---------------|--------|--------|---------|--------|-------|-------|-------|-----------------|-----------------|--------|-------|-----|
| D-ATIS | ATLANTA | ATLANTA TOWER | | | | | | | | GND CON | | | | ALL |
| ARR | 119.65 | APP CON | 8L-26R | 8R-26L | 9L-27R | 9R-27L | 10-28 | ALL | RWYS | (8L-26R,8R-26L) | (9L-27R,9R-27L) | 10-28 | ALL | |
| DEP | 125.55 | 127.9 | 379.9 | 119.1 | 125.325 | 123.85 | 119.3 | 119.5 | 254.4 | 121.9 | 121.75 | 121.65 | 254.4 | |



SE-4, 10 JUL 2025 to 07 AUG 2025



ATLANTA, GEORGIA

HARTSFIELD/JACKSON ATLANTA INTL (ATL)

Amdt 6 22APR21

33°38'N-84°26'W

ILS or LOC RWY 8L

ATLANTA, GEORGIA

AL-26 (FAA)

25219

| | | | | |
|---|------------------------|-----------------------------|---|---|
| LOC/DME I-HFW 109.3 Chan 30 | APP CRS 095° | Rwy Ldg TDZE Apt Elev | 8L 8800 1015 1026 | 8R 9999 1024 1026 |
|---|------------------------|-----------------------------|---|---|

ILS or LOC RWY 8L

HARTSFIELD/JACKSON ATLANTA INTL (ATL)

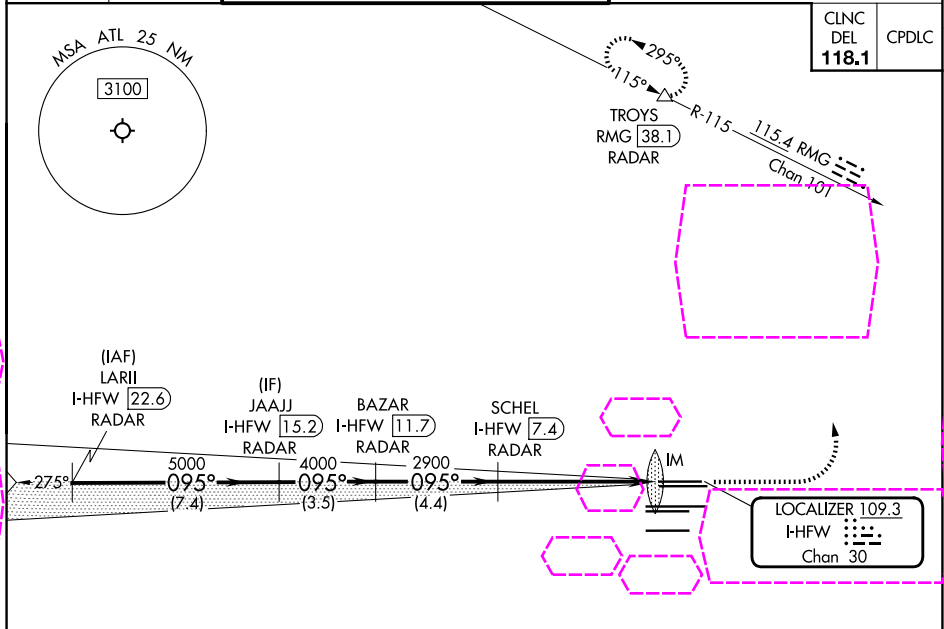
RADAR required for procedure entry. DME or RADAR required.

Simultaneous approach authorized.
Inop table does not apply to sidestep 8R.

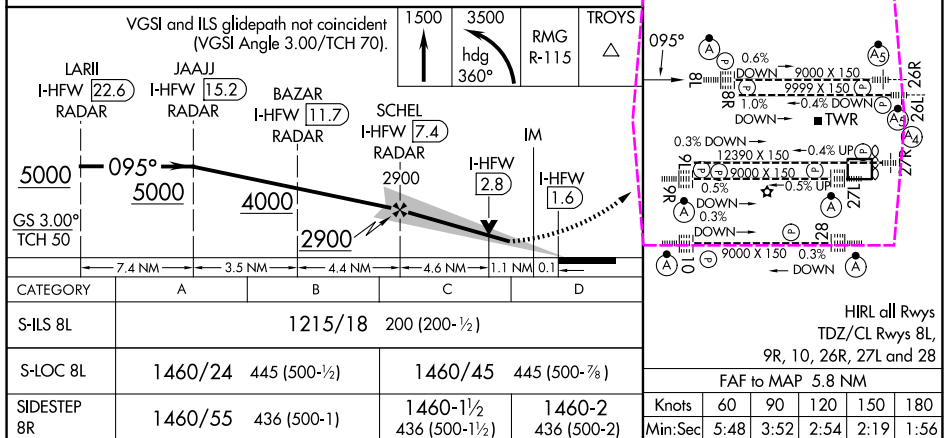
Rwy 8L
ALS-F-2

MISSED APPROACH: Climb to 1500 then climbing left turn to 3500 on heading 360° and RMG VORTAC R-115 to TROYS/RMG 38.1 DME/RADAR and hold.

| | | | | | | | | | |
|--|--|---------------|--------|--------|--------|-----------------------------|------------------|------------------|------------------------------------|
| D-ATIS ARR 119.65 DEP 125.55 | ATLANTA APP CON 127.9 379.9 | ATLANTA TOWER | | | | ALL RWYS 121.9 | GND CON | | ALL RWYS 121.65 254.4 |
| | | 8L-26R | 8R-26L | 9L-27R | 9R-27L | 10-28 | (8L-26R, 8R-26L) | (9L-27R, 9R-27L) | 10-28 |



| | | |
|-----------|--------------|--------------|
| ELEV 1026 | TDZE 8L 1015 | TDZE 8R 1024 |
|-----------|--------------|--------------|



| | | | | |
|-------------|---------------------|-------------|----------------------|--------------------|
| CATEGORY | A | B | C | D |
| S-ILS 8L | 1215/18 200 (200-½) | | | |
| S-LOC 8L | 1460/24 | 445 (500-½) | 1460/45 | 445 (500-¾) |
| SIDESTEP 8R | 1460/55 | 436 (500-1) | 1460-1½ 436 (500-1½) | 1460-2 436 (500-2) |

| | | | | |
|--|------|------|------|-----------|
| HRL all Rwy's | | | | |
| TDZ/CL Rwy's 8L, 9R, 10, 26R, 27L and 28 | | | | |
| FAF to MAP 5.8 NM | | | | |
| Knots | 60 | 90 | 120 | 150 180 |
| Min:Sec | 5:48 | 3:52 | 2:54 | 2:19 1:56 |

ATLANTA, GEORGIA

HARTSFIELD/JACKSON ATLANTA INTL (ATL)

Amtd 6 22APR21

33°38'N-84°26'W

ILS or LOC RWY 8L

SE-4, 07 AUG 2025 to 04 SEP 2025

SE-4, 07 AUG 2025 to 04 SEP 2025