

ATLANTA, GEORGIA

AL-26 (FAA)

25051

LOC/DME I-PKU 111.75 Chan 54 (Y)	APP CRS 275°	Rwy ldg TDZE 998 Apt Elev 1026
--	------------------------	--

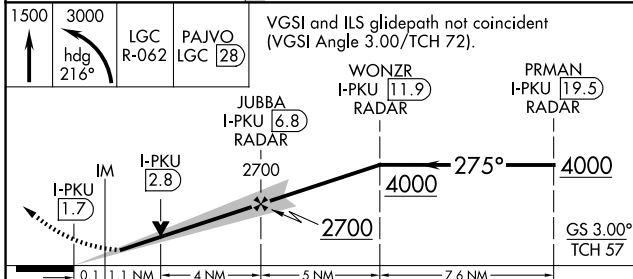
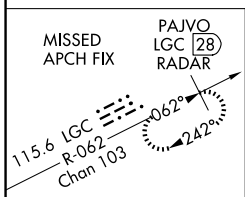
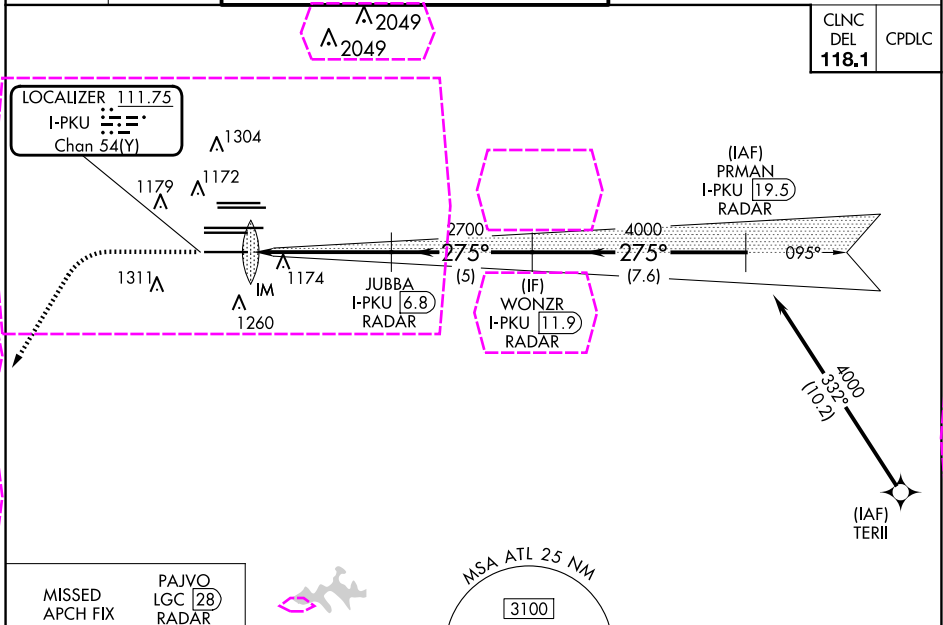
ILS or LOC RWY 28

HARTSFIELD/JACKSON ATLANTA INTL (ATL)

RNAV 1-GPS or RADAR required for procedure entry. From TERII: RNAV 1-GPS required. DME or RADAR required.	ALSIF-2 	MISSED APPROACH: Climb to 1500 then climbing left turn to 3000 on heading 216° and LGC VORTAC R-062 to PAJVO/LGC 28 DME/RADAR and hold.
Simultaneous approach authorized.		

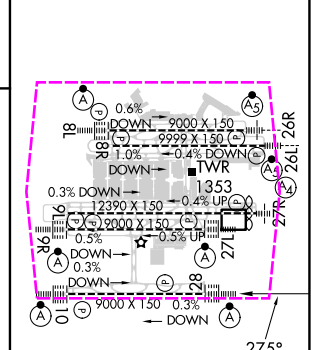
D-ATIS ARR 119.65 DEP 125.55	ATLANTA APP CON 127.9 379.9	ATLANTA TOWER 8L-26R 8R-26L 9L-27R 9R-27L 10-28 RWYS 119.1 125.325 123.85 119.3 119.5 254.4					ALL RWYS 121.9	GND CON (8L-26R,8R-26L) (9L-27R,9R-27L) 10-28 121.75 121.65 254.4	ALL RWYS
--	--	--	--	--	--	--	-----------------------------	--	-------------

CLNC DEL 118.1	CPDLC
-----------------------------	-------



CATEGORY	A	B	C	D
S-ILS 28	1198/18 200 (200-½)			
S-LOC 28	1440/24	442 (500-½)	1440/45	442 (500-¾)

ELEV 1026	TDZE 998
-----------	----------



HIRL all Rwy's TDZ/CL Rwy's 8L, 9R, 10, 26R, 27L and 28				
FAF to MAP 5.2 NM				
Knots	60	90	120	150 180
Min:Sec	5:12	3:28	2:36	2:05 1:44

ATLANTA, GEORGIA
Amdt 5 07OCT21

HARTSFIELD/JACKSON ATLANTA INTL (ATL)
33°38'N-84°26'W

ILS or LOC RWY 28

SE-4, 10 JUL 2025 to 07 AUG 2025

ATLANTA, GEORGIA

AL-26 (FAA)

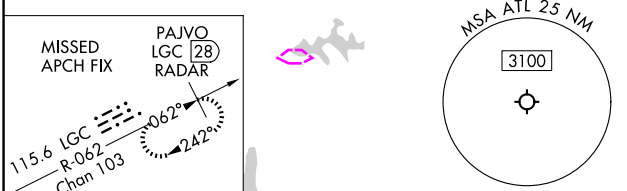
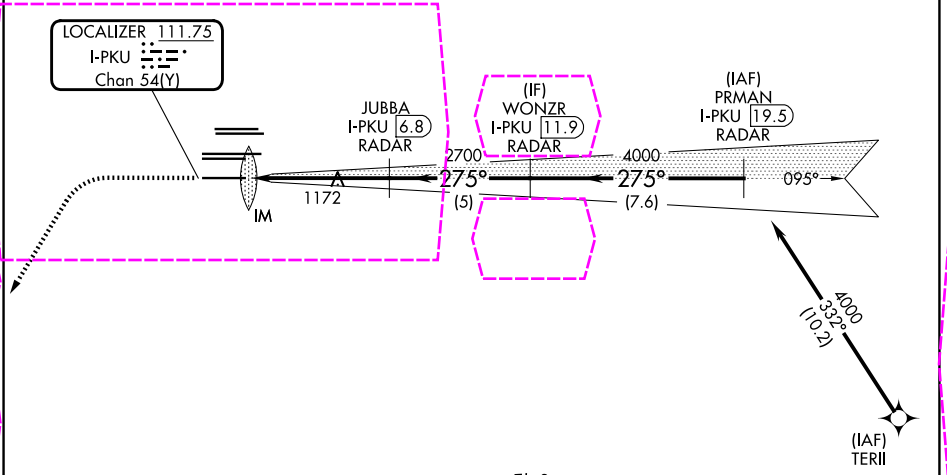
25219

LOC/DME I-PKU 111.75 Chan 54 (Y)	APP CRS 275°	Rwy Ldg TDZE 998 Apt Elev 1026
--	------------------------	--

ILS or LOC RWY 28

HARTSFIELD/JACKSON ATLANTA INTL (ATL)

RNAV 1-GPS or RADAR required for procedure entry. From TERII: RNAV 1-GPS required. DME or RADAR required.		ALS2-2	MISSED APPROACH: Climb to 1500 then climbing left turn to 3000 on heading 216° and LGC VORTAC R-062 to PAJVO/LGC 28 DME/RADAR and hold.	
Simultaneous approach authorized.				
D-ATIS ARR 119.65	ATLANTA APP CON	ATLANTA TOWER	ALL RWYS	GND CON
DEP 125.55	127.9 379.9	8L-26R 8R-26L 9L-27R 9R-27L 10-28	119.1 125.325 123.85 119.3 119.5 254.4	121.9 121.75 121.65 254.4
				CLNC DEL 118.1
				CPDLC



1500 ↑ hdg 216°	3000	LGC R-062	PAJVO LGC 28	VGSI and ILS glidepath not coincident (VGSI Angle 3.00/TCH 72).	
IM		JUBBA I-PKU 6.8 RADAR	WONZR I-PKU 11.9 RADAR	PRMAN I-PKU 19.5 RADAR	
I-PKU 1.7		2700	2700	4000	4000
0.1		1.1 NM	4 NM	5 NM	7.6 NM
CATEGORY	A	B	C	D	
S-ILS 28	1198/18		200 (200-½)		
S-LOC 28	1440/24	442 (500-½)	1440/45	442 (500-¾)	

ELEV 1026		TDZE 998
HIRL all Rwy's TDZ/CL Rwy's 8L, 9R, 10, 26R, 27L and 28		
FAF to MAP 5.2 NM		
Knots	60	90 120 150 180
Min:Sec	5:12	3:28 2:36 2:05 1:44

ATLANTA, GEORGIA
Amdt 5 07OCT21

33°38'N-84°26'W

HARTSFIELD/JACKSON ATLANTA INTL (ATL)

ILS or LOC RWY 28

SE-4, 07 AUG 2025 to 04 SEP 2025

SE-4, 07 AUG 2025 to 04 SEP 2025