

ATLANTA, GEORGIA

AL-26 (FAA)

25051

LOC I-AFA	APP CRS	Rwy Idg	27R	27L
111.3	275°	TDZE	11890	8865
		Apt Elev	985	999
			1026	1026

# ILS or LOC RWY 27R

## HARTSFIELD/JACKSON ATLANTA INTL (ATL)

DME and RADAR required.

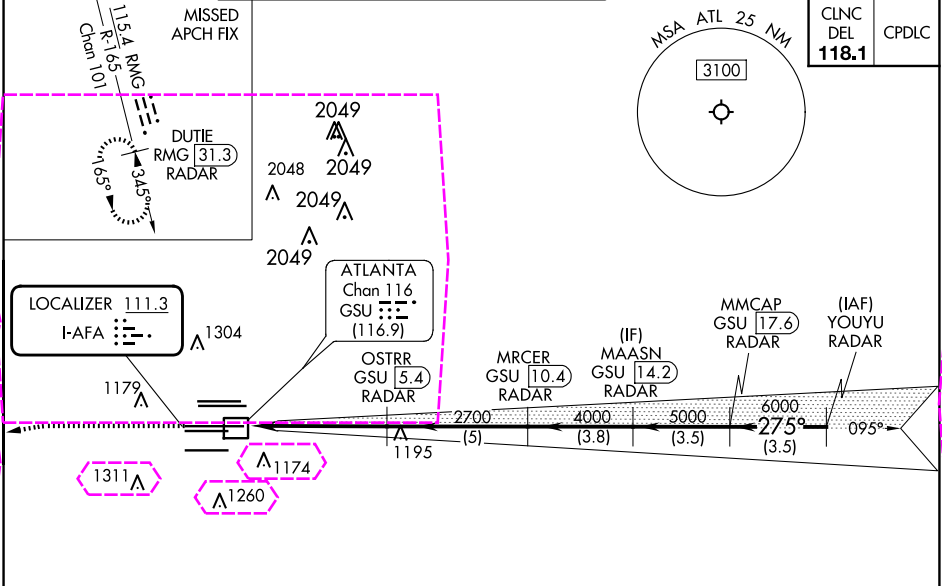
Simultaneous approach authorized. Inop table does not apply to S-ILS 27R all Cats. DME from GSU DME. DME use requires simultaneous reception of I-AFA and GSU DME.

Rwy 27R MALS

Rwy 27L ALSF-2

MISSED APPROACH: Climb to 1500 then climbing left turn to 4000 on heading 265° and RMG VORTAC R-165 to DUTIE/RMG 31.3 DME/RADAR and hold.

D-ATIS	ATLANTA	ATLANTA TOWER					ALL	GND CON		ALL
ARR 119.65	APP CON	8L-26R	8R-26L	9L-27R	9R-27L	10-28	RWYS	(8L-26R,8R-26L)	(9L-27R,9R-27L)	10-28
DEP 125.55	127.9 379.9	119.1	125.325	123.85	119.3	119.5	254.4	121.9	121.75	121.65 254.4



ELEV 1026

TDZE 27R 985

TDZE 27L 999

CATEGORY	A	B	C	D
S-ILS 27R	1185/40		200 (200-¾)	
S-LOC 27R	1420/40	435 (400-¾)	1420/50	435 (400-1)
SIDESTEP 27L	1420/55 421 (400-1)			1420-1½ 421 (400-1½)

ATLANTA, GEORGIA

Amtd 8 20APR23

HARTSFIELD/JACKSON ATLANTA INTL (ATL)

33°38'N-84°26'W

# ILS or LOC RWY 27R

ATLANTA, GEORGIA

AL-26 (FAA)

25219

LOC I-AFA	APP CRS	Rwy Ldg	27R	27L
111.3	275°	11890	8865	
		TDZE	985	999
		Apt Elev	1026	1026

# ILS or LOC RWY 27R

## HARTSFIELD/JACKSON ATLANTA INTL (ATL)

DME and RADAR required.

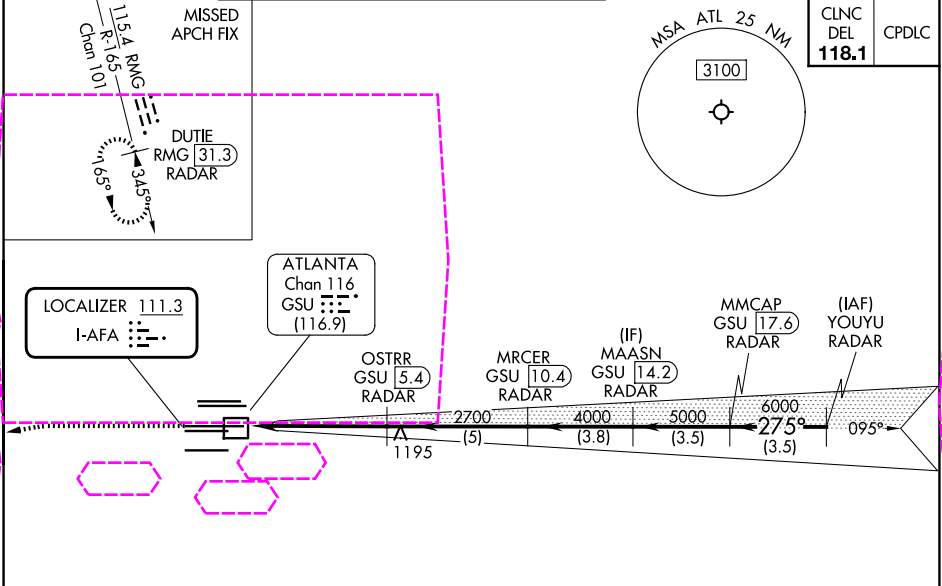
Simultaneous approach authorized. Inop table does not apply to S-ILS 27R all Cats. DME from GSU DME. DME use requires simultaneous reception of I-AFA and GSU DME.

Rwy 27R MALS

Rwy 27L ALSF-2

MISSED APPROACH: Climb to 1500 then climbing left turn to 4000 on heading 265° and RMG VORTAC R-165 to DUTIE/RMG 31.3 DME/RADAR and hold.

D-ATIS	ATLANTA	ATLANTA TOWER					ALL	GND CON		ALL
ARR 119.65	APP CON	8L-26R	8R-26L	9L-27R	9R-27L	10-28	RWYS	(8L-26R,8R-26L)	(9L-27R,9R-27L)	10-28
DEP 125.55	127.9 379.9	119.1	125.325	123.85	119.3	119.5	254.4	121.9	121.75	121.65 254.4



ELEV 1026

TDZE 27R 985

TDZE 27L 999

HIRL all Rwys

TDZ/CL Rwys 8L, 9R, 10, 26R, 27L and 28

FAF to MAP 5.2 NM

Knots 60 90 120 150 180

Min:Sec 5:12 3:28 2:36 2:05 1:44

1500

4000

hdg 265°

RMG R-165

DUTIE RMG [31.3]

VGSI and ILS glidepath not coincident (VGSI Angle 3.00/TCH 72).

OSTRR GSU [5.4] RADAR

MRCER GSU [10.4] RADAR

MAASN GSU [14.2] RADAR

MMCAP GSU [17.6] RADAR

YOUYU RADAR

GSU [1.3]

2700

4000

5000

6000

7000

275°

GS 3.00° TCH 56

CATEGORY	A	B	C	D
S-ILS 27R	1185/40		200 (200-¾)	
S-LOC 27R	1420/40	435 (400-¾)	1420/50	435 (400-1)
SIDESTEP 27L	1420/55 421 (400-1)			1420-1½ 421 (400-1½)

ATLANTA, GEORGIA

Amtd 8 20APR23

HARTSFIELD/JACKSON ATLANTA INTL (ATL)

33°38'N-84°26'W

ILS or LOC RWY 27R

SE-4, 07 AUG 2025 to 04 SEP 2025

SE-4, 07 AUG 2025 to 04 SEP 2025