

ATLANTA, GEORGIA

AL-26 (FAA)

25051

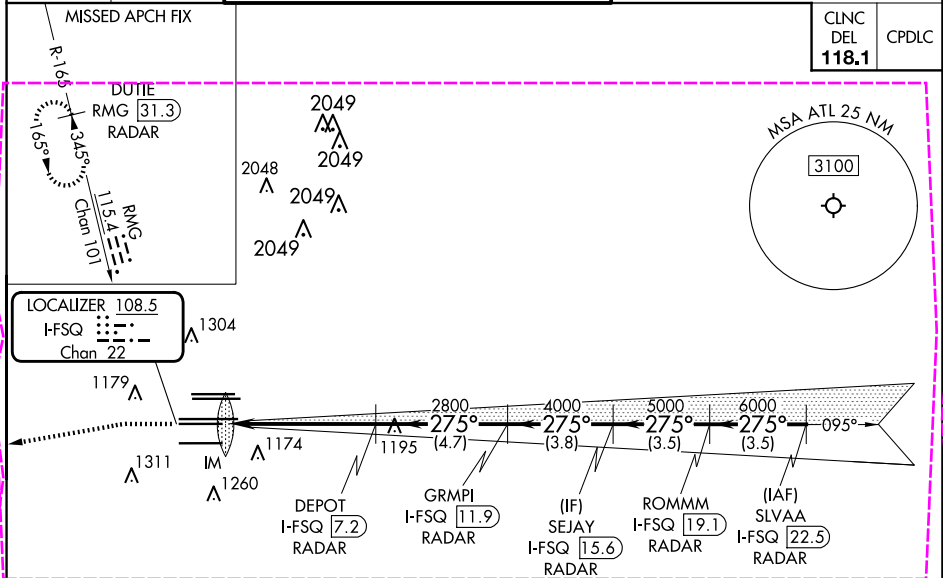
LOC/DME I-FSQ 108.5 Chan 22	APP CRS 275°	Rwy Idg 27L TDZE 8865 Apt Elev 1026	27R 11890 985 1026
---	------------------------	--	---

ILS or LOC RWY 27L

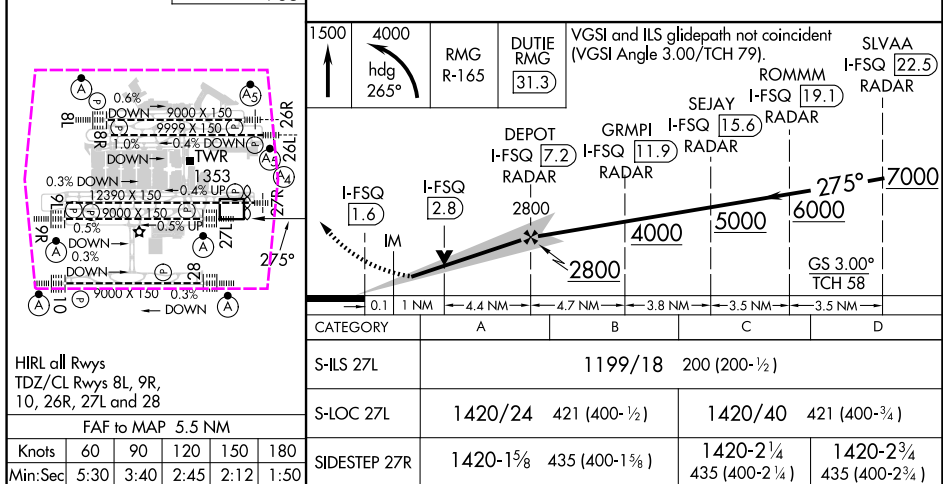
HARTSFIELD/JACKSON ATLANTA INTL (ATL)

DME or RADAR required. RADAR required for procedure entry.	Rwy 27L ALSF-2	Rwy 27R MALS	MISSED APPROACH: Climb to 1500 then climbing left turn to 4000 on heading 265° and RMG VORTAC R-165 to DUTIE/RMG 31.3 DME/RADAR and hold.
Simultaneous approach authorized. Inop table does not apply to Sidestep Rwy 27R.			

D-ATIS	ATLANTA APP CON	ATLANTA TOWER					ALL RWYS	GND CON			ALL RWYS
ARR 119.65		8L-26R	8R-26L	9L-27R	9R-27L	10-28		(8L-26R, 8R-26L)	(9L-27R, 9R-27L)	10-28	
DEP 125.55	127.9 379.9	119.1	125.325	123.85	119.3	119.5 254.4	121.9	121.75	121.65	254.4	



ELEV 1026	D	TDZE 27L 999 TDZE 27R 985
-----------	---	------------------------------



ATLANTA, GEORGIA

Amdt 19 22APR21

HARTSFIELD/JACKSON ATLANTA INTL (ATL)

33°38'N-84°26'W

ILS or LOC RWY 27L

ATLANTA, GEORGIA

AL-26 (FAA)

25219

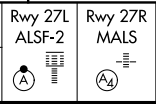
LOC/DME I-FSQ 108.5 Chan 22	APP CRS 275°	Rwy Ldg 27L TDZE 8865 Apt Elev 1026	Rwy 27R 11890 985 1026
---	------------------------	--	---

ILS or LOC RWY 27L

HARTSFIELD/JACKSON ATLANTA INTL (ATL)

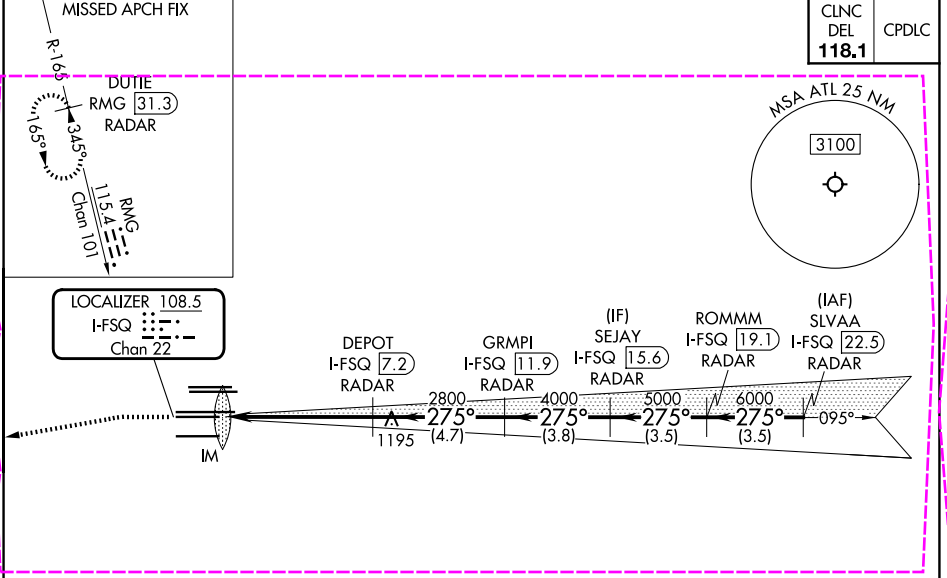
DME or RADAR required.
RADAR required for procedure entry.

Simultaneous approach authorized.
Inop table does not apply to Sidestep Rwy 27R.



MISSED APPROACH: Climb to 1500 then climbing left turn to 4000 on heading 265° and RMG VORTAC R-165 to DUTIE/RMG 31.3 DME/RMG and hold.

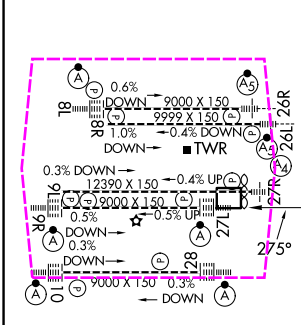
D-ATIS	ATLANTA APP CON	ATLANTA TOWER					ALL RWYS	GND CON			ALL RWYS
ARR 119.65		8L-26R	8R-26L	9L-27R	9R-27L	10-28	(8L-26R, 8R-26L)	(9L-27R, 9R-27L)	10-28		
DEP 125.55	127.9 379.9	119.1	125.325	123.85	119.3	119.5	254.4	121.9	121.75	121.65	254.4



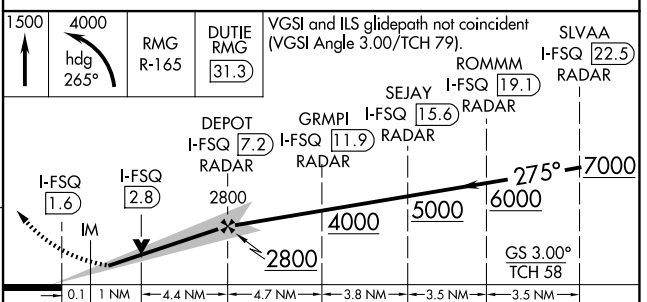
SE-4, 07 AUG 2025 to 04 SEP 2025

SE-4, 07 AUG 2025 to 04 SEP 2025

ELEV 1026	TDZE 27L 999
	TDZE 27R 985



HIRL all Rwy					
TDZ/CL Rwy 8L, 9R, 10, 26R, 27L and 28					
FAF to MAP 5.5 NM					
Knots	60	90	120	150	180
Min:Sec	5:30	3:40	2:45	2:12	1:50



CATEGORY	A	B	C	D
S-ILS 27L	1199/18 200 (200-½)			
S-LOC 27L	1420/24	421 (400-½)	1420/40	421 (400-¾)
SIDESTEP 27R	1420-1½	435 (400-1½)	1420-2¼	1420-2¾
			435 (400-2¼)	435 (400-2¾)

ATLANTA, GEORGIA

Amdt 19 22APR21

HARTSFIELD/JACKSON ATLANTA INTL (ATL)

33°38'N-84°26'W

ILS or LOC RWY 27L