

ATLANTA, GEORGIA

AL-26 (FAA)

25051

LOC/DME I-GXZ 110.1 Chan 38	APP CRS 275°	Rwy Idg 26R 8500 26L 9999 TDZE 990 Apt Elev 1026	26R 9999 26L 996 1026
-------------------------------------------------	------------------------	------------------------------------------------------------------------------------------	--------------------------------------------------

ILS or LOC RWY 26R
HARTSFIELD/JACKSON ATLANTA INTL (ATL)

RADAR required.

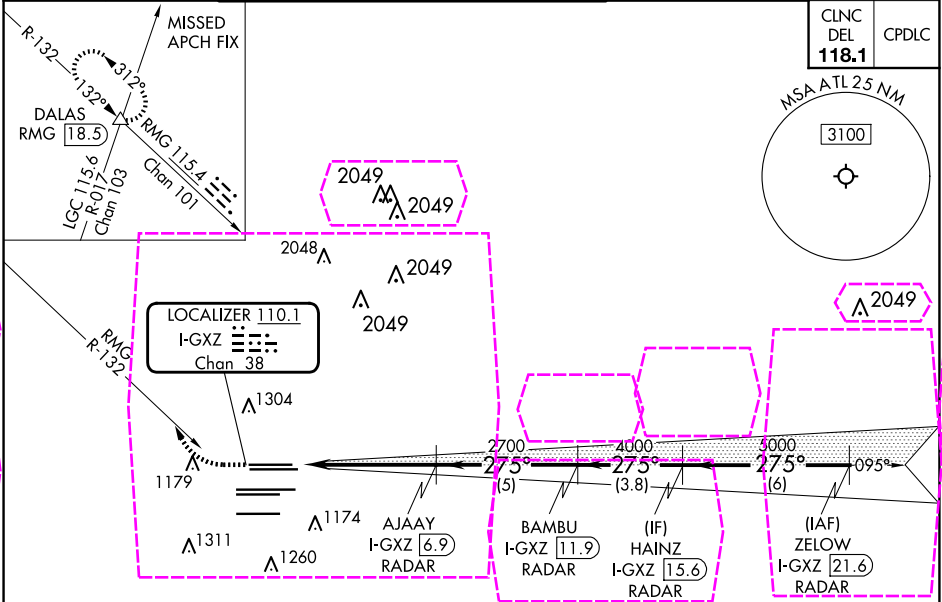
Simultaneous approach authorized.
For inop ALS, increase sidestep Rwy 26L Cats A and B visibility ¼ SM.

Rwy 26R
MALSR

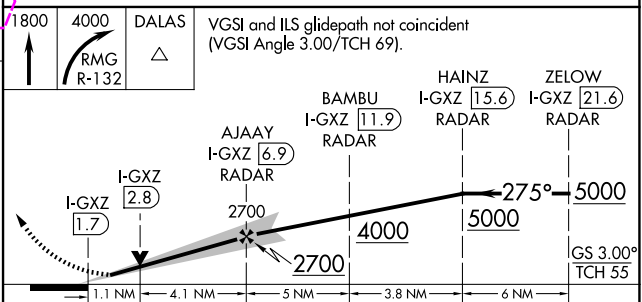
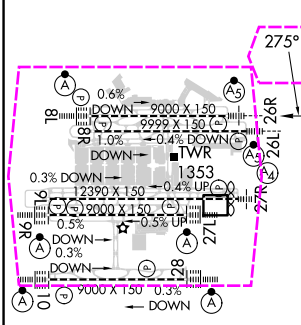
Rwy 26L
MALSR

MISSED APPROACH: Climb to 1800 then climbing right turn to 4000 on RMG VORTAC R-132 to DALAS INT/RMG 18.5 DME and hold.

D-ATIS ARR 119.65 DEP 125.55	ATLANTA APP CON 127.9 379.9	ATLANTA TOWER 8L-26R 119.1 125.325 123.85 119.3 119.5 254.4	ALL RWYS 121.9	GND CON 8L-26R, 8R-26L (9L-27R, 9R-27L) 10-28 121.75 121.65 254.4	ALL RWYS
--------------------------------------------------	------------------------------------------	-----------------------------------------------------------------------	-----------------------------	--------------------------------------------------------------------------------	-------------



ELEV 1026	TDZE 26R 990 TDZE 26L 996
-----------	------------------------------



HIRL all Rwy TDZ/CL Rwy 8L, 9R, 10, 26R, 27L and 28					
FAF to MAP 5.2 NM					
Knots	60	90	120	150	180
Min:Sec	5:12	3:28	2:36	2:05	1:44
CATEGORY	A		B		C
S-ILS 26R	1190/18		200 (200-½)		
S-LOC 26R	1420/24	430 (400-½)	1420/40	430 (400-¾)	
SIDESTEP 26L	1420/55	424 (400-1)	1420-1¼ 424 (400-1¼)	1420-1¼ 424 (400-1¼)	

ATLANTA, GEORGIA
Amdt 8 22APR21

HARTSFIELD/JACKSON ATLANTA INTL (ATL)
33°38'N-84°26'W
ILS or LOC RWY 26R

SE-4, 10 JUL 2025 to 07 AUG 2025

SE-4, 10 JUL 2025 to 07 AUG 2025

HARTSFIELD/JACKSON ATLANTA INTL (ATL)
33°38'N-84°26'W ILS or LOC RWY 26R