

ATLANTA, GEORGIA

AL-26 (FAA)

25051

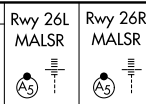
LOC/DME I-BRU 108.7 Chan 24	APP CRS 275°	Rwy Idg 9999 8500 TDZE 996 990 Apt Elev 1026 1026
---	------------------------	--

ILS or LOC RWY 26L

HARTSFIELD/JACKSON ATLANTA INTL (ATL)

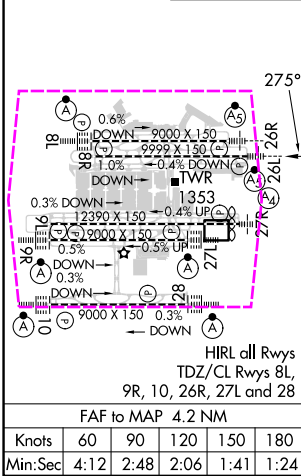
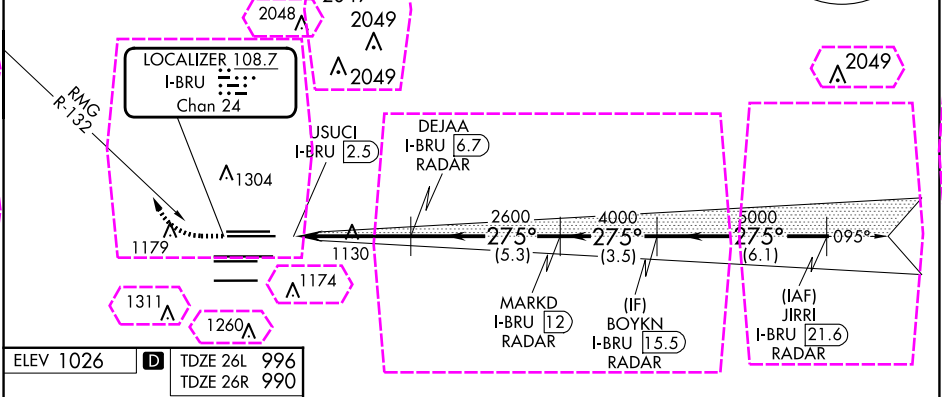
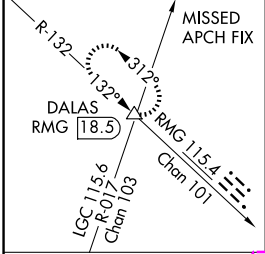
RADAR required.

▼ Inop table does not apply to sidestep Rwy 26R Cats A and B. For inop ALS, increase S-ILS 26L all Cats visibility to RVR 4500 and S-LOC 26L Cat E visibility to RVR 6000. For inop ALS to Rwy 26R, increase sidestep 26R Cat E visibility to 2 SM. Simultaneous approach authorized.



MISSED APPROACH: Climb to 1500 then climbing right turn to 4000 on heading 290° and RMG R-132 to DALAS INT/RMG VORTAC 18.5 DME and hold.

D-ATIS ARR 119.65 DEP 125.55	ATLANTA APP CON 127.9 379.9	ATLANTA TOWER 8L-26R 9L-27R 9R-27L 10-28 RWYS 119.1 125.325 123.85 119.3 119.5 254.4	ALL RWYS 121.9	GND CON (8L-26R, 8R-26L) (9L-27R, 9R-27L) 10-28 RWYS 121.75 121.65 254.4	ALL RWYS
--	--	---	-----------------------------	---	-------------



1500	4000	hdg 290°	RMG R-132	DALAS	VGSI and ILS glidepath not coincident (VGSI Angle 3.00/TCH 63).
USUCI I-BRU 2.5	DEJAA I-BRU 6.7	MARKD I-BRU 12	BOYKN I-BRU 15.5	JIRRI I-BRU 21.6	
2600	4000	5000	275°	5000	GS 3.00° TCH 52
0.7 NM	4.2 NM	5.3 NM	3.5 NM	6.1 NM	
CATEGORY	A	B	C	D	E
S-ILS 26L	1280/24 284 (300-1/2)				
S-LOC 26L	1380/24 384 (400-1/2) 1380/35 384 (400-1/2)				
SIDESTEP 26R	1380/55 390 (400-1) 1380-1 1/2 390 (400-1 1/2)				

ATLANTA, GEORGIA

Amdt 22 22APR21

HARTSFIELD/JACKSON ATLANTA INTL (ATL)

33°38'N-84°26'W

ILS or LOC RWY 26L

ATLANTA, GEORGIA

AL-26 (FAA)

25219

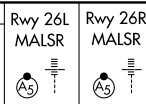
LOC/DME I-BRU 108.7 Chan 24	APP CRS 275°	Rwy Ldg TDZE 999 Apt Elev 1026	26L 8500 26R 990 1026
---	------------------------	--	--

ILS or LOC RWY 26L

HARTSFIELD/JACKSON ATLANTA INTL (ATL)

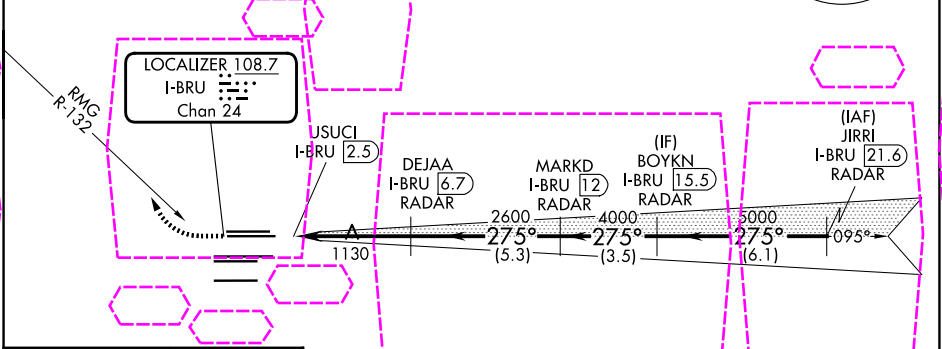
RADAR required.

▼ Inop table does not apply to sidestep Rwy 26R Cats A and B. For inop ALS, increase S-ILS 26L all Cats visibility to RVR 4500 and S-LOC 26L Cat E visibility to RVR 6000. For inop ALS to Rwy 26R, increase sidestep 26R Cat E visibility to 2 SM. Simultaneous approach authorized.

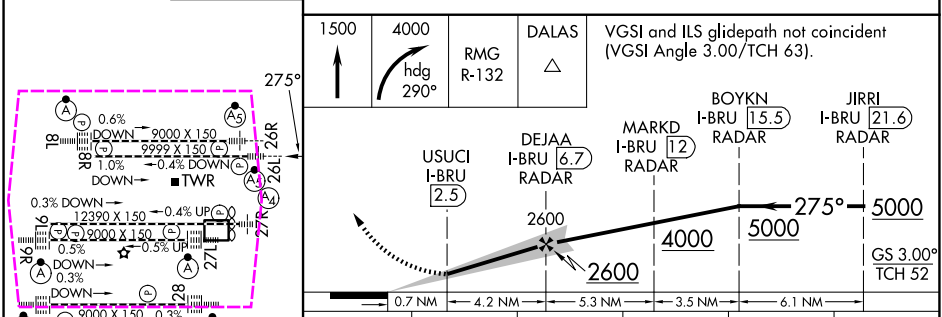


MISSED APPROACH: Climb to 1500 then climbing right turn to 4000 on heading 290° and RMG R-132 to DALAS INT/RMG VORTAC 18.5 DME and hold.

D-ATIS ARR 119.65 DEP 125.55	ATLANTA APP CON 127.9	ATLANTA TOWER 8L-26R 8R-26L 9L-27R 9R-27L 10-28 RWYS 119.1 125.325 123.85 119.3 119.5 254.4	ALL RWYS 121.9	GND CON (8L-26R, 8R-26L) (9L-27R, 9R-27L) 10-28 RWYS 121.75 121.65 254.4	ALL RWYS
--	------------------------------------	--	-----------------------------	---	-------------



ELEV 1026	TDZE 26L 996 TDZE 26R 990
------------------	--



CATEGORY	A	B	C	D	E
S-ILS 26L	1280/24 284 (300-1/2)				
S-LOC 26L	1380/24	384 (400-1/2)	1380/35	384 (400-5/8)	
SIDESTEP 26R	1380/55 390 (400-1)		1380-1 1/2 390 (400-1 1/2)		

ATLANTA, GEORGIA

Amdt 22 22APR21

HARTSFIELD/JACKSON ATLANTA INTL (ATL)

33°38'N-84°26'W

ILS or LOC RWY 26L

SE-4, 07 AUG 2025 to 04 SEP 2025

SE-4, 07 AUG 2025 to 04 SEP 2025