

25051

LOC/DME I-HFW 109.3 Chan 30	APP CRS 095°	Rwy Idg 8800 TDZE 1015 Apt Elev 1026
---	------------------------	---

ILS RWY 8L (CAT II & III)
HARTSFIELD/JACKSON ATLANTA INTL (ATL)

RADAR required for procedure entry. DME or RADAR required.

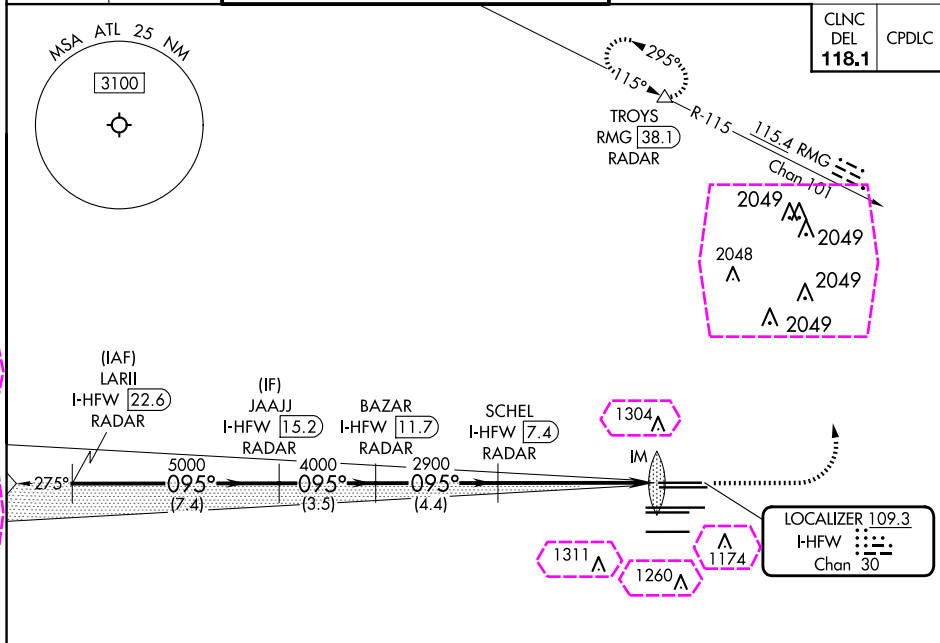
ALSF-2

MISSED APPROACH: Climb to 1500 then climbing left turn to 3500 on heading 360° and RMG VORTAC R-115 to TROYS/RMG 38.1 DME/RADAR and hold.

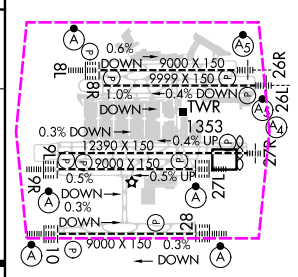
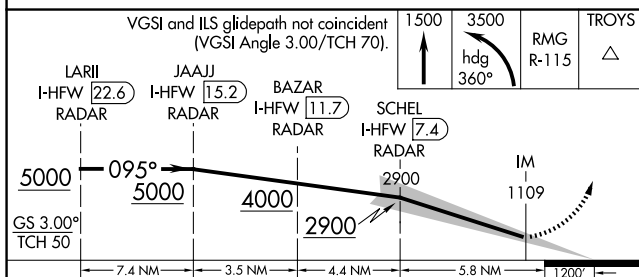
Simultaneous approach authorized.

100	1000	100
100	1000	100
100	1000	100
100	1000	100

D-ATIS	ATLANTA	ATLANTA TOWER						ALL	GND CON			ALL
ARR 119.65	APP CON	8L-26R	8R-26L	9L-27R	9R-27L	10-28	RWYS	(8L-26R,8R-26L)	(9L-27R,9R-27L)	10-28	RWYS	
DEP 125.55	127.9 379.9	119.1	125.325	123.85	119.3	119.5	254.4	121.9	121.75	121.65	254.4	



ELEV 1026	D	TDZE 1015
-----------	----------	-----------



CATEGORY	A	B	C	D
S-ILS 8L	CAT II RA 105/12 100 DA 1115			
S-ILS 8L	CAT III RVR 06			

CATEGORY II & III ILS SPECIAL AIRCREW
& AIRCRAFT CERTIFICATION REQUIRED

HIRL all Rwy's
TDZ/CL Rwy's 8L, 9R, 10, 26R,
27L and 28

SE-4, 07 AUG 2025 to 04 SEP 2025