

ATLANTA, GEORGIA

AL-26 (FAA)

25051

LOC/DME I-PKU 111.75 Chan 54 (Y)	APP CRS 275°	Rwy ldg TDZE 998 Apt Elev 1026
--	------------------------	--

ILS RWY 28 (SA CAT I)

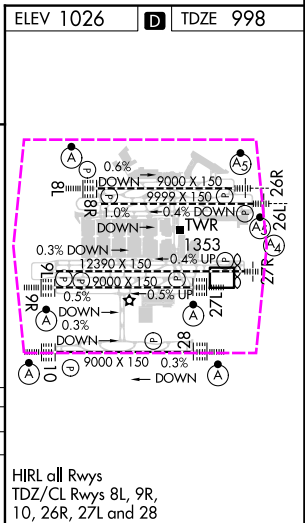
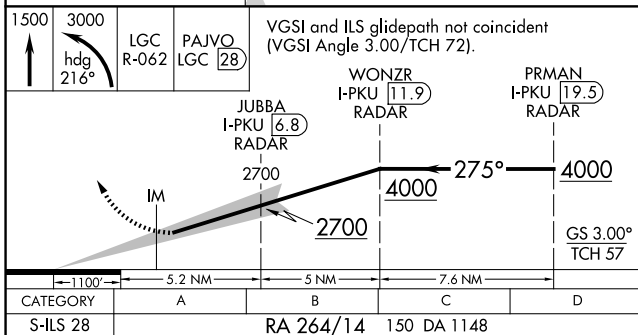
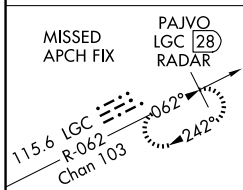
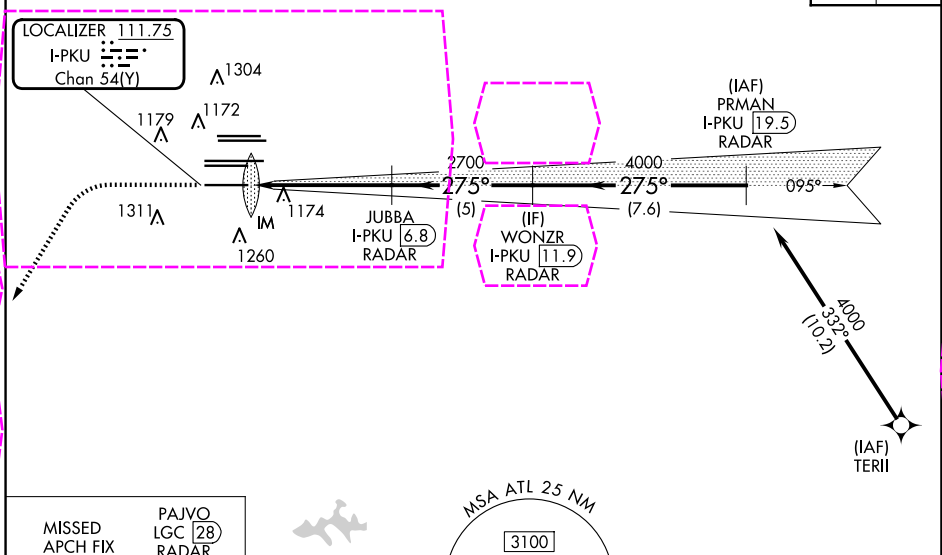
HARTSFIELD/JACKSON ATLANTA INTL (ATL)

RNAV 1-GPS or RADAR required for procedure entry. From TERI: RNAV 1-GPS required. DME or RADAR required.	ALSF-2	MISSED APPROACH: Climb to 1500 then climbing left turn to 3000 on heading 216° and LGC VORTAC R-062 to PAJVO/LGC 28 DME/RADAR and hold.
Simultaneous approach authorized. Requires specific OPSPEC, MSPEC, or LOA approval.		

D-ATIS ARR 119.65	ATLANTA APP CON	ATLANTA TOWER					ALL RWYS	GND CON		ALL RWYS
DEP 125.55	127.9 379.9	8L-26R	8R-26L	9L-27R	9R-27L	10-28	RWYS	(8L-26R,8R-26L)	(9L-27R,9R-27L)	10-28
		119.1	125.325	123.85	119.3	119.5	254.4	121.9	121.75	121.65 254.4

Λ 2049
Λ 2049

CLNC DEL 118.1	CPDLC
-----------------------------	-------



SA CATEGORY I ILS - SPECIAL AIRCREW & AIRCRAFT CERTIFICATION REQUIRED

ATLANTA, GEORGIA
Amdt 5 07OCT21

33°38'N-84°26'W

HARTSFIELD/JACKSON ATLANTA INTL (ATL)
ILS RWY 28 (SA CAT I)

SE-4, 10 JUL 2025 to 07 AUG 2025

SE-4, 10 JUL 2025 to 07 AUG 2025

ILS RWY 28 (SA CAT I)