

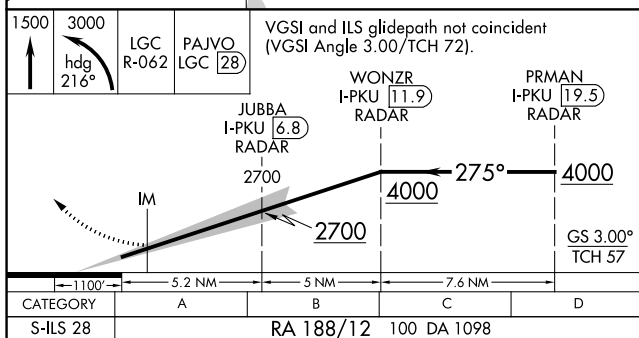
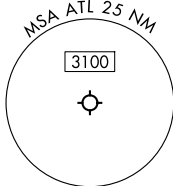
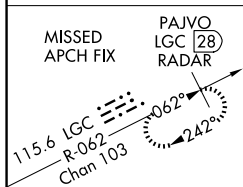
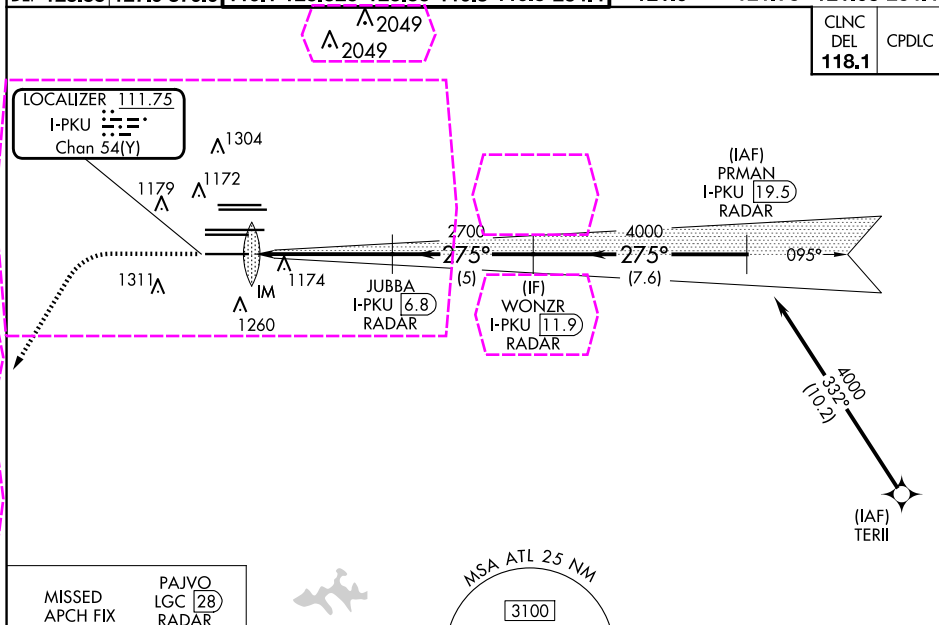
**ILS RWY 28 (CAT II)**  
HARTSFIELD/JACKSON ATLANTA INTL (ATL)

**MISSED APPROACH:** Climb to 1500 then climbing left turn to 3000 on heading 216° and LGC VORTAC R-062 to PAJVO/LGC 28 DME/RADAR and hold.

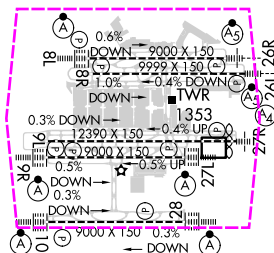
**T** Simultaneous approach authorized.

D-ATIS	ATLANTA APP CON	ATLANTA TOWER							GND CON		
ARR	119.65	8L-26R	8R-26L	9L-27R	9R-27L	10-28	ALL RWYS	(8L-26R,8R-26L)	(9L-27R,9R-27L)	10-28	ALL RWYS
DEP	125.55	127.9	379.9	119.1	125.325	123.85	119.3	119.5	254.4	121.9	121.75 121.65 254.4

CLNC DEL <b>118.1</b>	CPDLC
-----------------------------	-------



ELEV 1026	<b>D</b>	TDZE 998
-----------	----------	----------



CATEGORY II ILS - SPECIAL AIRCREW  
& AIRCRAFT CERTIFICATION REQUIRED

HIRL all Rwys  
TDZ/CL Rwys 8L, 9R,  
10, 26R, 27L and 28

ATLANTA, GEORGIA

AL-26 (FAA)

25219

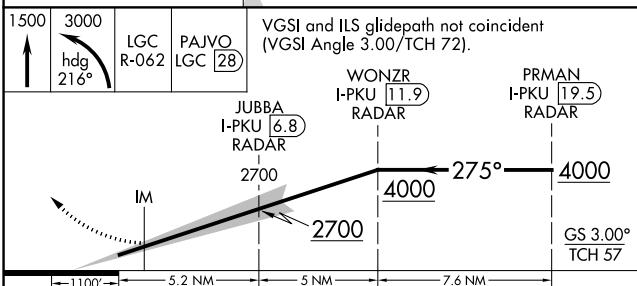
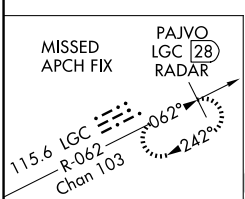
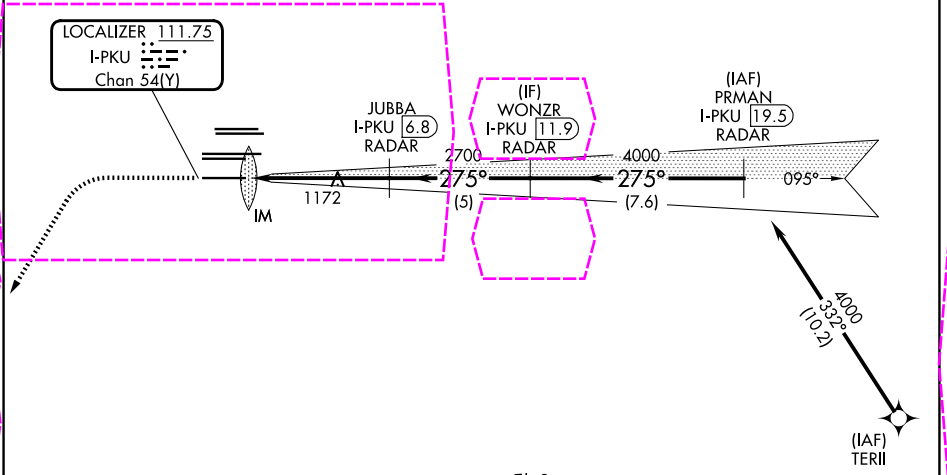
LOC/DME I-PKU <b>111.75</b> Chan <b>54</b> (Y)	APP CRS <b>275°</b>	Rwy Ldg TDZE <b>998</b> Apt Elev <b>1026</b>
--	------------------------	--

# ILS RWY 28 (CAT II)

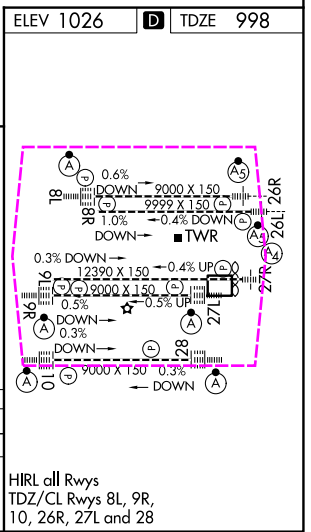
## HARTSFIELD/JACKSON ATLANTA INTL (ATL)

RNAV 1-GPS or RADAR required for procedure entry. From TERII: RNAV 1-GPS required. DME or RADAR required.		ALSIF-2	MISSED APPROACH: Climb to 1500 then climbing left turn to 3000 on heading 216° and LGC VORTAC R-062 to PAJVO/LGC 28 DME/RADAR and hold.	
Simultaneous approach authorized.		A		
D-ATIS ARR <b>119.65</b> DEP <b>125.55</b>	ATLANTA APP CON <b>127.9 379.9</b>	ATLANTA TOWER 8L-26R 8R-26L 9L-27R 9R-27L 10-28 RWYS <b>119.1 125.325 123.85 119.3 119.5 254.4</b>		ALL RWYS <b>121.9 121.75 121.65 254.4</b>

CLNC DEL <b>118.1</b>	CPDLC
-----------------------------	-------



CATEGORY	A	B	C	D
S-ILS 28	RA 188/12 100 DA 1098			
CATEGORY II ILS - SPECIAL AIRCREW & AIRCRAFT CERTIFICATION REQUIRED				



ATLANTA, GEORGIA  
Amdt 5 07OCT21

HARTSFIELD/JACKSON ATLANTA INTL (ATL)  
33°38'N-84°26'W

# ILS RWY 28 (CAT II)

SE-4, 07 AUG 2025 to 04 SEP 2025

SE-4, 07 AUG 2025 to 04 SEP 2025