

ATLANTA, GEORGIA

AL-26 (FAA)

25051

LOC/DME I-FSQ <b>108.5</b> Chan <b>22</b>	APP CRS <b>275°</b>	Rwy Idg <b>8865</b> TDZE <b>999</b> Apt Elev <b>1026</b>
---	------------------------	--

**ILS RWY 27L (SA CAT I)**  
HARTSFIELD/JACKSON ATLANTA INTL (ATL)

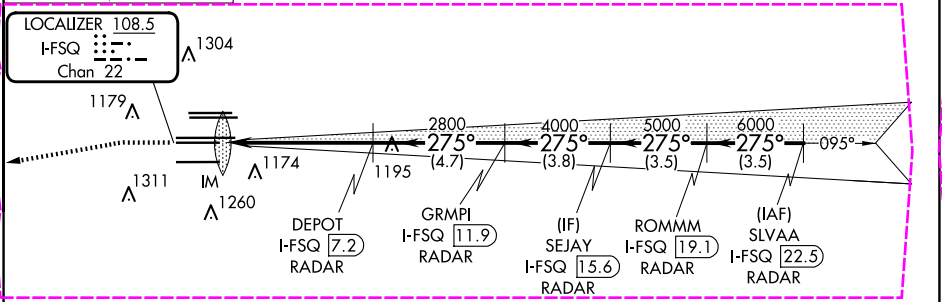
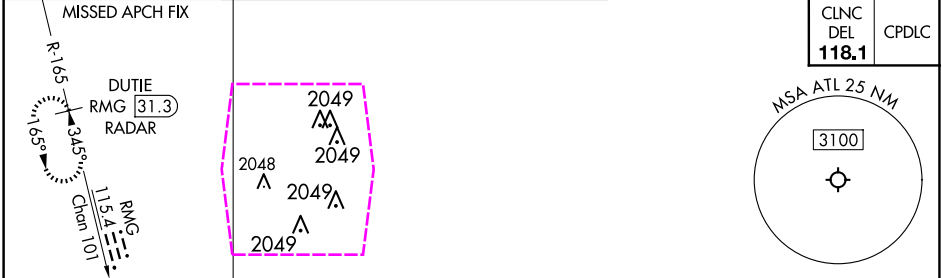
DME or RADAR required.  
RADAR required for procedure entry.

ALSIF-2

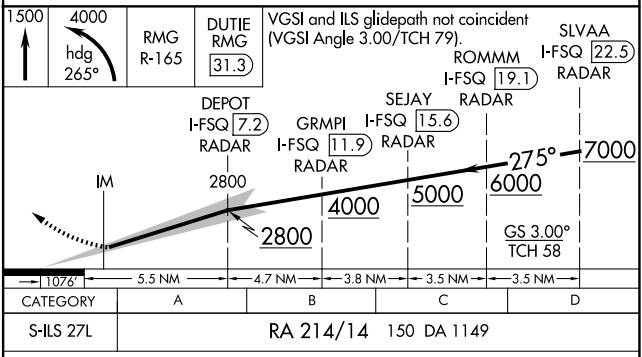
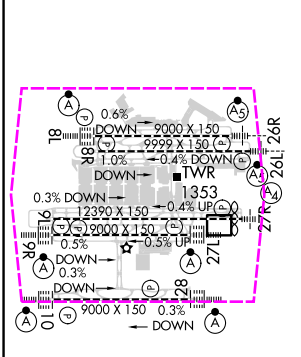
MISSED APPROACH: Climb to 1500 then climbing left turn to 4000 on heading 265° and RMG VORTAC R-165 to DUTIE/RMG 31.3 DME/RADAR and hold.

Simultaneous approach authorized.  
Requires specific OPSPEC, MSPEC, or LOA approval.

D-ATIS ARR <b>119.65</b> DEP <b>125.55</b>	ATLANTA APP CON <b>127.9 379.9</b>	ATLANTA TOWER 8L-26R 8R-26L 9L-27R 9R-27L 10-28 RWYS <b>119.1 125.325 123.85 119.3 119.5 254.4</b>	ALL RWYS <b>121.9</b>	GND CON (8L-26R, 8R-26L) (9L-27R, 9R-27L) 10-28 <b>121.75 121.65 254.4</b>	ALL RWYS
--	--	--	-----------------------------	--	-------------



ELEV 1026	TDZE 999
-----------	----------



ATLANTA, GEORGIA  
Amdt 19 22APR21

HARTSFIELD/JACKSON ATLANTA INTL (ATL)  
33°38'N-84°26'W

**SA CATEGORY I ILS- SPECIAL AIRCREW & AIRCRAFT CERTIFICATION REQUIRED**

**ILS RWY 27L (SA CAT I)**

ATLANTA, GEORGIA

AL-26 (FAA)

25219

LOC/DME I-FSQ <b>108.5</b> Chan <b>22</b>	APP CRS <b>275°</b>	Rwy Ldg TDZE Apt Elev	<b>8865</b> <b>999</b> <b>1026</b>
---	------------------------	-----------------------------	--

# ILS RWY 27L (SA CAT I)

## HARTSFIELD/JACKSON ATLANTA INTL (ATL)

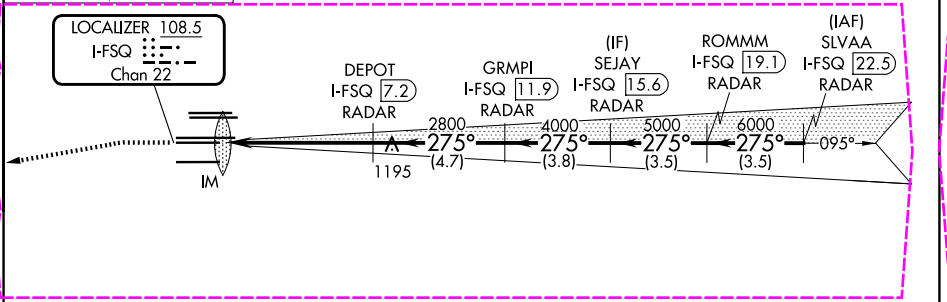
DME or RADAR required.  
RADAR required for procedure entry.

Simultaneous approach authorized.  
Requires specific OPSPEC, MSPEC, or LOA approval.

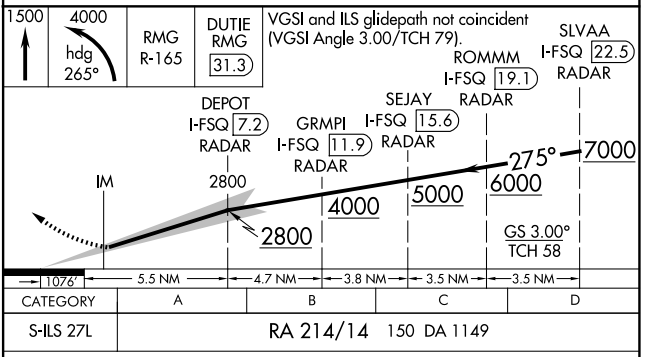
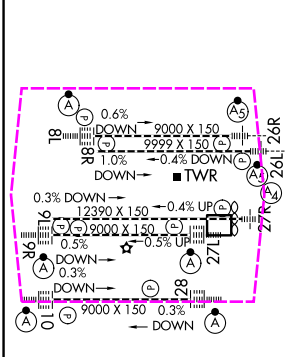


MISSED APPROACH: Climb to 1500 then climbing left turn to 4000 on heading 265° and RMG VORTAC R-165 to DUTIE/RMG 31.3 DME/RADAR and hold.

D-ATIS ARR <b>119.65</b>	ATLANTA APP CON DEP <b>125.55</b>	ATLANTA TOWER 8L-26R 8R-26L 9L-27R 9R-27L 10-28 RWYS <b>119.1 125.325 123.85 119.3 119.5 254.4</b>	ALL RWYS <b>121.9</b>	GND CON (8L-26R, 8R-26L) (9L-27R, 9R-27L) 10-28 <b>121.75</b>	ALL RWYS <b>121.65 254.4</b>
-----------------------------	---	--	-----------------------------	---	------------------------------------



ELEV <b>1026</b>	<b>D</b>	TDZE <b>999</b>
------------------	----------	-----------------



SA CATEGORY I ILS- SPECIAL AIRCREW & AIRCRAFT CERTIFICATION REQUIRED

ATLANTA, GEORGIA  
Amdt 19 22APR21

HARTSFIELD/JACKSON ATLANTA INTL (ATL)  
33°38'N-84°26'W  
**ILS RWY 27L (SA CAT I)**

SE-4, 07 AUG 2025 to 04 SEP 2025

SE-4, 07 AUG 2025 to 04 SEP 2025