

SE-4, 10 JUL 2025 to 07 AUG 2025

ATLANTA, GEORGIA

AL-26 (FAA)

25219

LOC/DME I-FSQ <b>108.5</b> Chan <b>22</b>	APP CRS <b>275°</b>	Rwy Ldg <b>8865</b> TDZE <b>999</b> Apt Elev <b>1026</b>
---	------------------------	---

ILS RWY 27L (CAT II)

HARTSFIELD/JACKSON ATLANTA INTL (ATL)

DME or RADAR required.
RADAR required for procedure entry.

ALSF-2

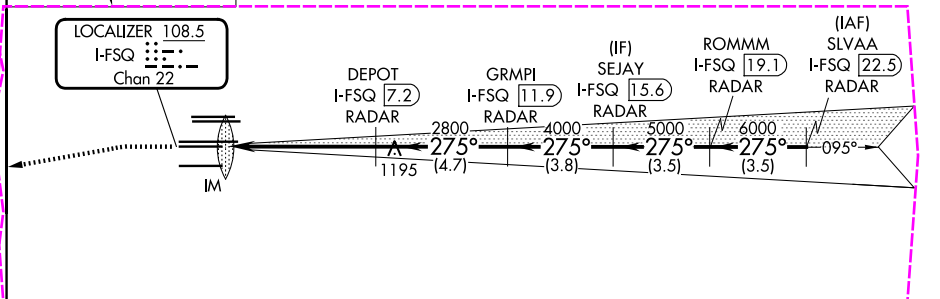
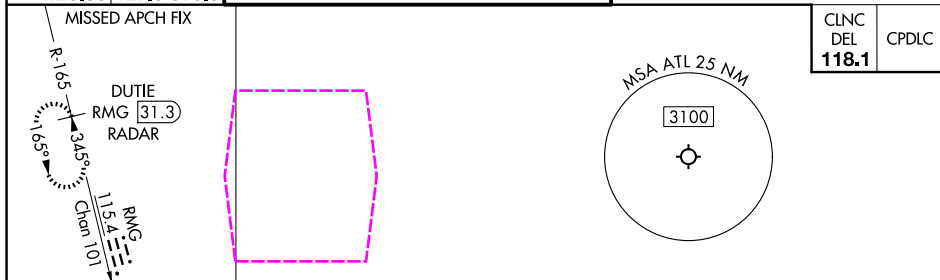
**MISSED APPROACH:** Climb to 1500 then climbing left turn to 4000 on heading 265° and RMG VORTAC R-165 to DUTIE/RMG 31.3 DME/RADAR and hold.

**T** Simultaneous approach authorized.

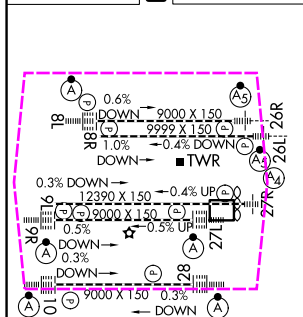


D-ATIS	ATLANTA APP CON	ATLANTA TOWER					ALL RWYS	GND CON			ALL RWYS	
ARR <b>119.65</b>		8L-26R	8R-26L	9L-27R	9R-27L	10-28		(8L-26R, 8R-26L)	(9L-27R, 9R-27L)	10-28		
DEP <b>125.55</b>	<b>127.9</b>	<b>379.9</b>	<b>119.1</b>	<b>125.325</b>	<b>123.85</b>	<b>119.3</b>	<b>119.5</b>	<b>254.4</b>	<b>121.9</b>	<b>127.75</b>	<b>121.65</b>	<b>254.4</b>

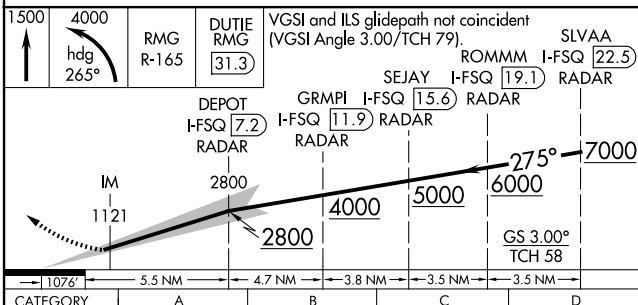
CLNC DEL <b>118.1</b>	CPDLC
-----------------------------	-------



ELEV	1026	<b>D</b>	TDZE	999
------	------	----------	------	-----



HIRL all Rwy's  
TDZ/CL Rwy's 8L, 9R,  
10, 26R, 27L and 28



CATEGORY II ILS- SPECIAL AIRCREW  
& AIRCRAFT CERTIFICATION REQUIRED

ATLANTA, GEORGIA

Amdt 19 22APR21

HARTSFIELD/JACKSON ATLANTA INTL (ATL)

33°38'N-84°26'W

ILS RWY 27L (CAT II)