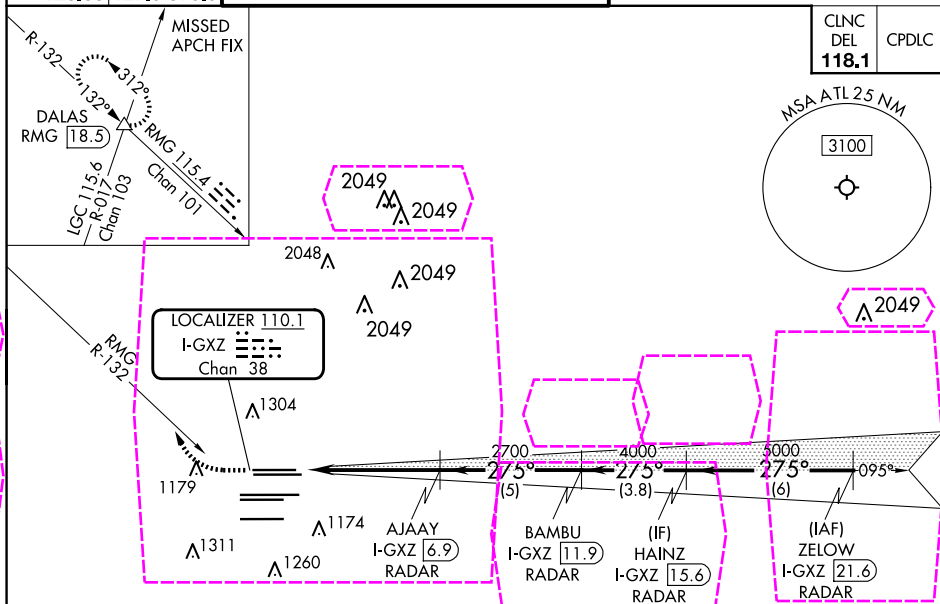


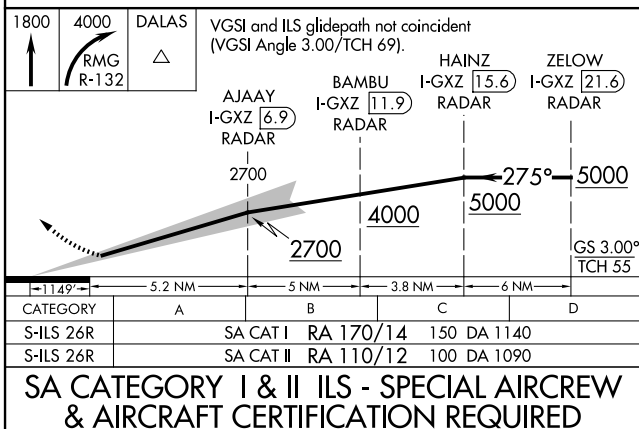
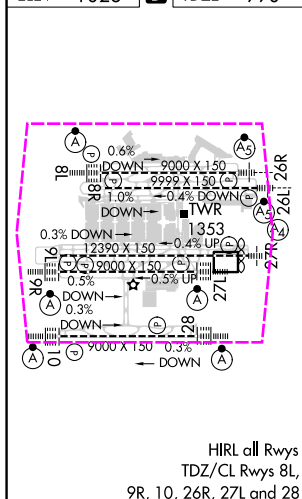
ILS RWY 26R (SA CAT I & II)  
HARTSFIELD/JACKSON ATLANTA INTL (ATL)

MISSED APPROACH: Climb to 1800 then climbing right turn to 4000 on RMG VORTAC R-132 to DALAS INT/RMG 18.5 DME and hold.

D-ATIS	ATLANTA APP CON	ATLANTA TOWER						GND CON					
ARR	119.65	8L-26R	8R-26L	9L-27R	9R-27L	10-28	ALL RWYS	(8L-26R,8R-26L)	(9L-27R,9R-27L)	10-28	ALL RWYS		
DEP	125.55	127.9	379.9	119.1	125.325	123.85	119.3	119.5	254.4	121.9	121.75	121.65	254.4



ELEV	1026	<b>D</b>	TDZE	990
------	------	----------	------	-----



HARTSFIELD/JACKSON ATLANTA INTL (ATL)  
33°38'N-84°26'W **ILS RWY 26R** (SA CAT I & II)

ATLANTA, GEORGIA

AL-26 (FAA)

25219


LOC/DME I-GXZ <b>110.1</b> Chan <b>38</b>	APP CRS <b>275°</b>	Rwy Ldg TDZE Apt Elev	<b>8500</b> <b>990</b> <b>1026</b>
---	------------------------	-----------------------------	--

**ILS RWY 26R (SA CAT I & II)**  
**HARTSFIELD/JACKSON ATLANTA INTL (ATL)**

**RADAR required.**

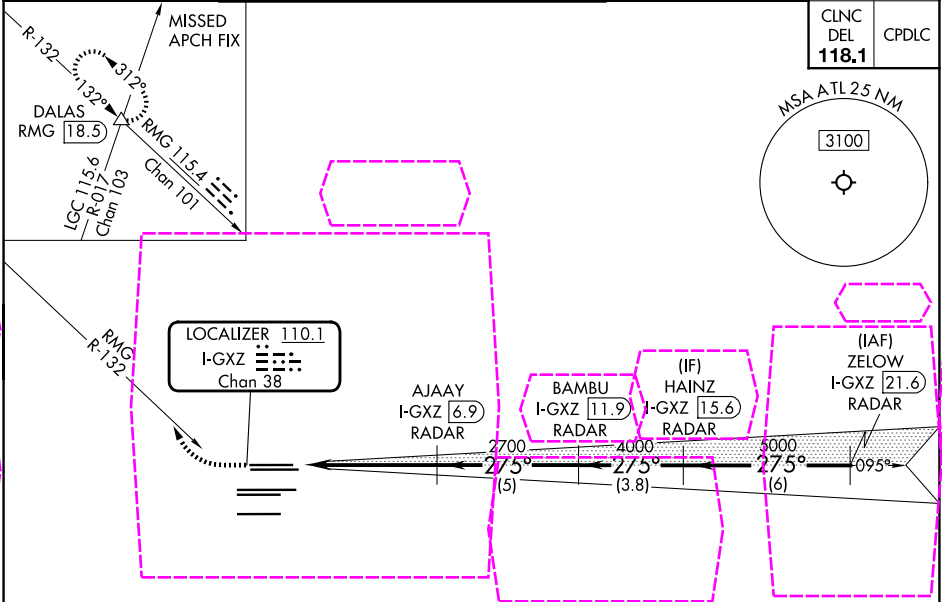
SA CAT I/II: Requires specific OPSPEC, MSPEC, or LOA approval. Simultaneous approach authorized.

**MALSR**

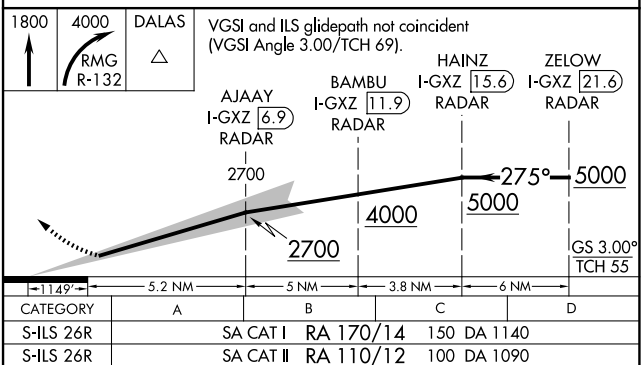
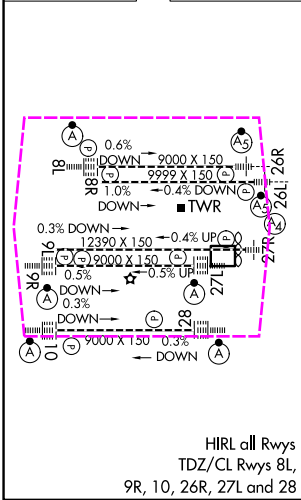


MISSED APPROACH: Climb to 1800 then climbing right turn to 4000 on RMG VORTAC R-132 to DALAS INT/RMG 18.5 DME and hold.

D-ATIS	ATLANTA	ATLANTA TOWER					ALL	GND CON			ALL
ARR <b>119.65</b>	APP CON	8L-26R	8R-26L	9L-27R	9R-27L	10-28	RWYS	(8L-26R, 8R-26L)	(9L-27R, 9R-27L)	10-28	RWYS
DEP <b>125.55</b>	<b>127.9 379.9</b>	<b>119.1</b>	<b>125.325</b>	<b>123.85</b>	<b>119.3</b>	<b>119.5</b>	<b>254.4</b>	<b>121.9</b>	<b>121.75</b>	<b>121.65</b>	<b>254.4</b>



ELEV 1026	TDZE 990
-----------	----------



**SA CATEGORY I & II ILS - SPECIAL AIRCREW & AIRCRAFT CERTIFICATION REQUIRED**

SE-4, 07 AUG 2025 to 04 SEP 2025

SE-4, 07 AUG 2025 to 04 SEP 2025