

ATLANTA, GEORGIA

AL-26 (FAA)

25051

LOC/DME I-OMO 111.55 Chan 52 (Y)	APP CRS 095°	Rwy Idg TDZE 1000 Apt Elev 1026
--	------------------------	---

ILS RWY 10 (SA CAT I)

HARTSFIELD/JACKSON ATLANTA INTL (ATL)

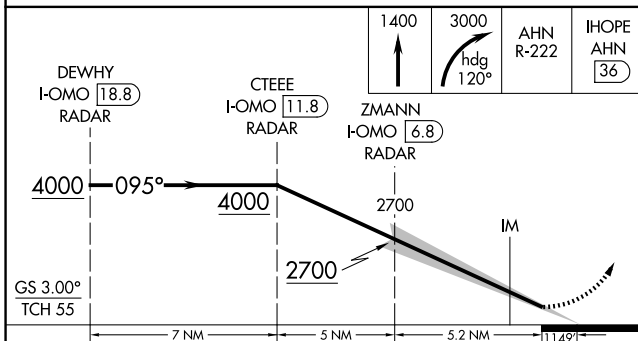
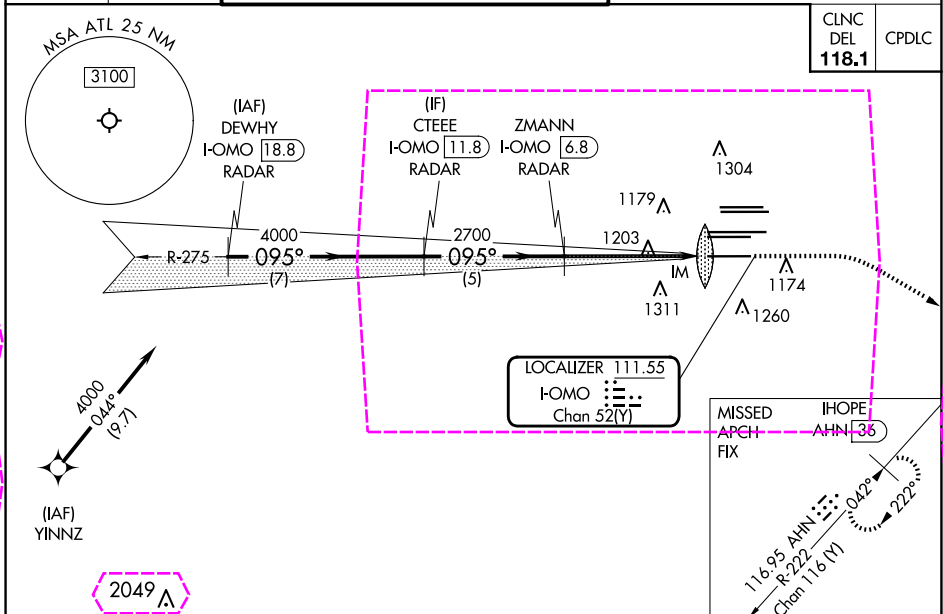
DME or RADAR required. RNP APCH - GPS from YINNZ.

Simultaneous approach authorized with Rwy 9L or 8R or 8L, or Rwy 9L and 8L. Requires specific OPSPEC, MSPEC, or LOA approval and use of HUD to DH.

ALSf-2

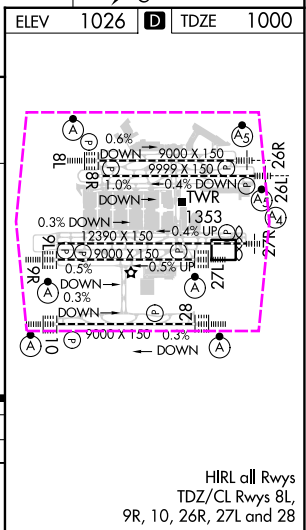
MISSED APPROACH: Climb to 1400 then climbing right turn to 3000 on heading 120° and AHN R-222 to IHOPE/AHN 36 DME and hold.

D-ATIS ARR 119.65 DEP 125.55	ATLANTA APP CON 127.9 379.9	ATLANTA TOWER 8L-26R 8R-26L 9L-27R 9R-27L 10-28 RWYS 119.1 125.325 123.85 119.3 119.5 254.4	ALL RWYS 121.9	GND CON 8L-26R, 8R-26L 9L-27R, 9R-27L 10-28 RWYS 121.75 121.65 254.4
--	--	--	-----------------------------	---



CATEGORY	A	B	C	D
S-ILS 10	RA 180/14	150	DA 1150	

SA CATEGORY I ILS - SPECIAL AIRCREW & AIRCRAFT CERTIFICATION REQUIRED



ATLANTA, GEORGIA

Amdt 5C 25JAN24

HARTSFIELD/JACKSON ATLANTA INTL (ATL)

33°38'N-84°26'W

ILS RWY 10 (SA CAT I)

ATLANTA, GEORGIA

AL-26 (FAA)

25219

LOC/DME I-OMO 111.55 Chan 52 (Y)	APP CRS 095°	Rwy Ldg TDZE 1000 Apt Elev 1026
--	------------------------	---

ILS RWY 10 (SA CAT I)

HARTSFIELD/JACKSON ATLANTA INTL (ATL)

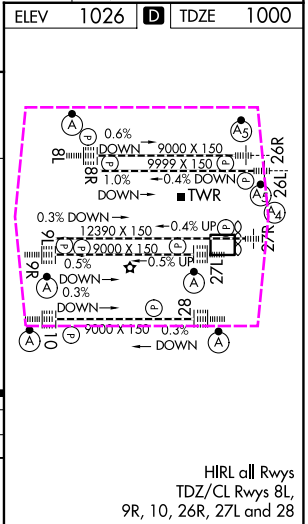
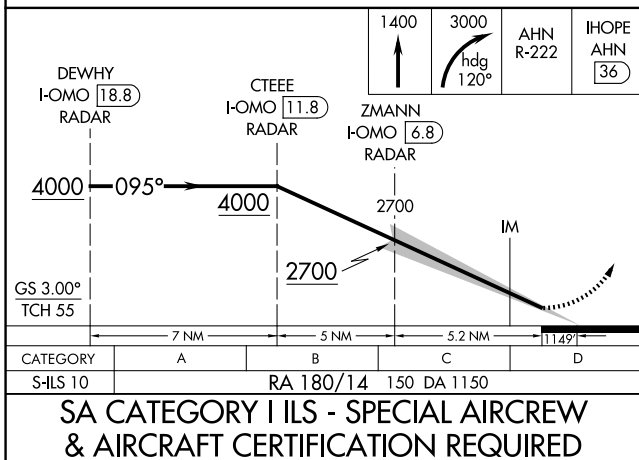
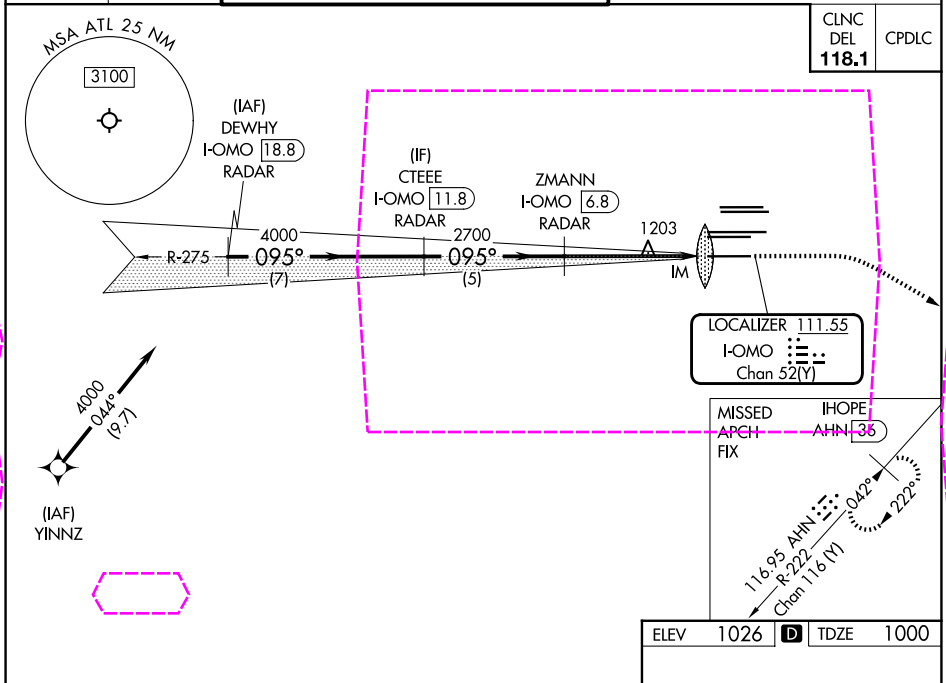
DME or RADAR required. RNP APCH - GPS from YINNZ.

Simultaneous approach authorized with Rwy 9L or 8R or 8L, or Rwy 9L and 8L. Requires specific OPSPEC, MSPEC, or LOA approval and use of HUD to DH.

ALSF-2

MISSED APPROACH: Climb to 1400 then climbing right turn to 3000 on heading 120° and AHN R-222 to IHOPE/AHN 36 DME and hold.

D-ATIS ARR 119.65 DEP 125.55	ATLANTA APP CON 127.9 379.9	ATLANTA TOWER 8L-26R 8R-26L 9L-27R 9R-27L 10-28 RWYS 119.1 125.325 123.85 119.3 119.5 254.4	ALL RWYS 121.9	GND CON (8L-26R, 8R-26L) (9L-27R, 9R-27L) 10-28 121.75 121.65 254.4	ALL RWYS
--	--	--	-----------------------------	--	-------------



ATLANTA, GEORGIA
Amdt 5C 25JAN24

33°38'N-84°26'W

HARTSFIELD/JACKSON ATLANTA INTL (ATL)
ILS RWY 10 (SA CAT I)