

25051

LOC/DME I-OMO <b>111.55</b> Chan <b>52</b> (Y)	APP CRS <b>095°</b>	Rwy Idg <b>9000</b> TDZE <b>1000</b> Apt Elev <b>1026</b>
--	------------------------	---

**ILS RWY 10 (CAT II & III)**  
HARTSFIELD/JACKSON ATLANTA INTL (ATL)

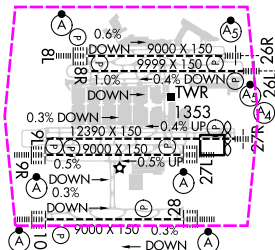
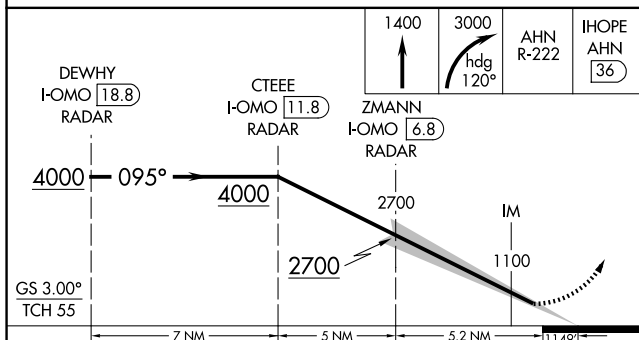
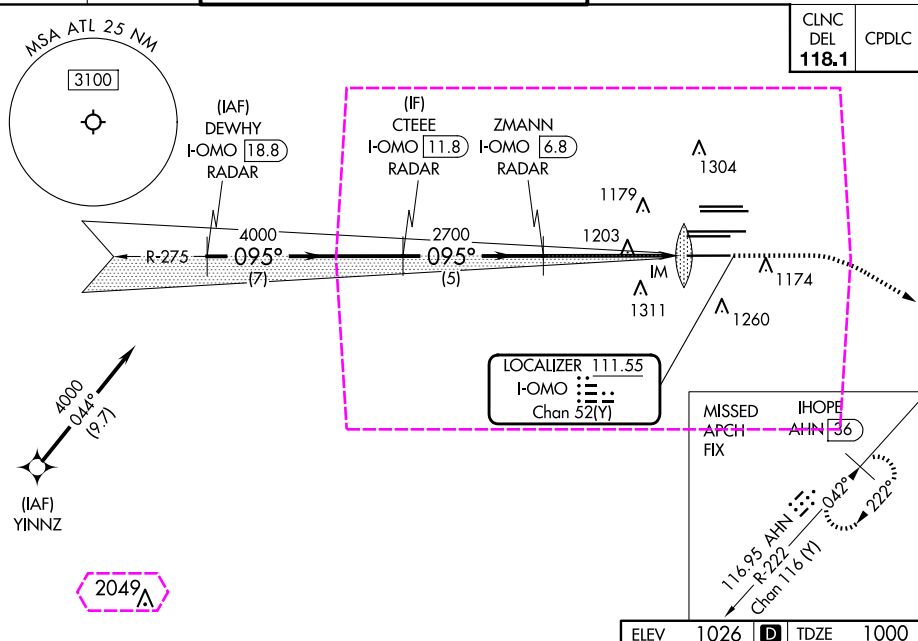
DME or RADAR required. RNP APCH - GPS from YINN.

ALSF-2

**MISSED APPROACH:** Climb to 1400 then climbing right turn to 3000 on heading 120° and AHN R-222 to IHOPE/AHN 36 DME and hold.

Simultaneous approach authorized with Rwy 9L or 8R or 8L, or Rwy 9L and 8L.

D-ATIS	ATLANTA	ATLANTA TOWER						GND CON			
ARR	APP CON	8L-26R	8R-26L	9L-27R	9R-27L	10-28	ALL RWYS	(8L-26R,8R-26L)	(9L-27R,9R-27L)	10-28	ALL RWYS
119.65	127.9	119.1	125.325	123.85	119.3	119.5	254.4	121.9	121.75	121.65	254.4
DEP	125.55	127.9	379.9								



CATEGORY	A	B	C	D
S-ILS 10	CAT II RA 110/12 100 DA 1100			
S-ILS 10	CAT III RVR 07			

CATEGORY II & III ILS - SPECIAL AIRCREW  
& AIRCRAFT CERTIFICATION REQUIRED

HIRL all Rwys  
TDZ/CL Rwys 8L,  
9R, 10, 26R, 27L and 28

HARTSFIELD/JACKSON ATLANTA INTL (ATL)

33°38'N-84°26'W

ILS RWY 10 (CAT II & III)

SE-4, 07 AUG 2025 to 04 SEP 2025