

ARDMORE, OKLAHOMA

AL-22 (FAA)

25051

VORTAC ADM 116.7 Chan 114	APP CRS 050°	Rwy Idg TDZE Apt Elev	N/A N/A 777
---	------------------------	-----------------------------	--

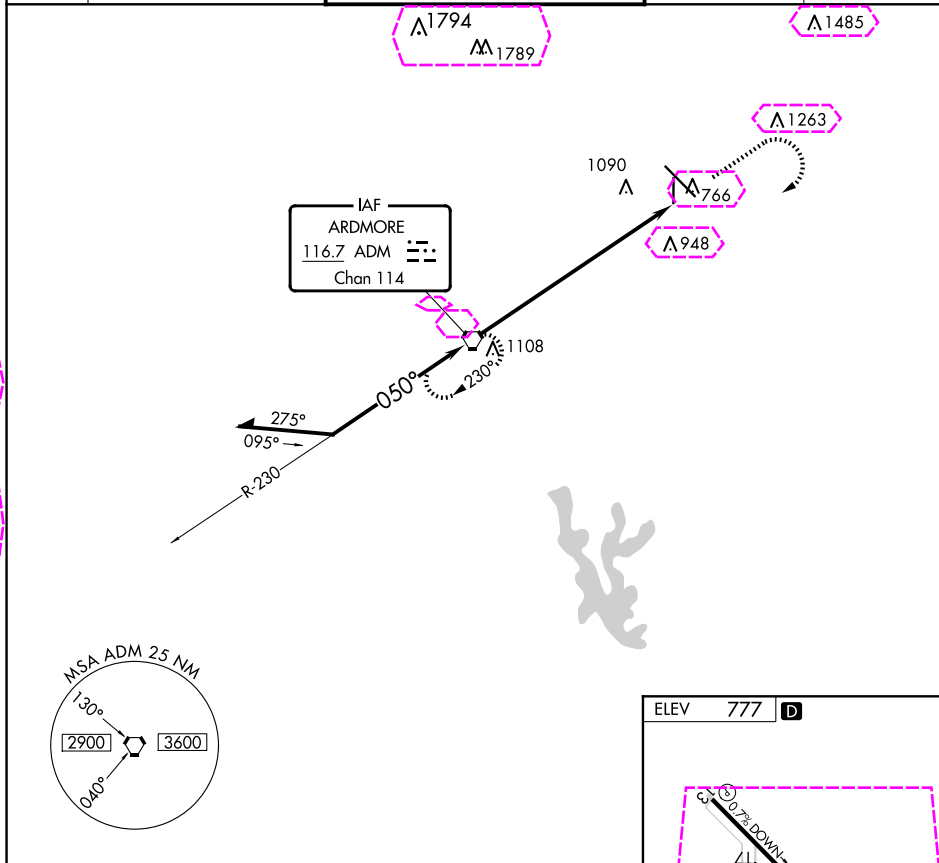
VOR-B

ARDMORE MUNI (ADM)

⚠ Circling Rwy 35 NA at night. Rwy 35 helicopter visibility reduction below 1 SM NA.
 ⚠ When local altimeter setting not received, use Ardmore Downtown Exec altimeter setting and increase all MDAs 40 feet.

MISSED APPROACH: Climb to 2000 then climbing right turn to 3000 direct ADM VORTAC and hold.

ATIS 125.6	FORT WORTH CENTER 124.75 323.0	ARDMORE TOWER ★ 118.5 (CTAF) 0 257.7	GND CON 121.8	UNICOM 122.95
----------------------	--	--	-------------------------	-------------------------



Remain within 10 NM				2000	3000	ADM
3000				230°	050°	3000
ADM VORTAC				050°	230°	ADM 8.7
8.7 NM						
CATEGORY	A	B	C	D	FAF to MAP 8.7 NM	
CIRCLING	1540-1	763 (800-1)	1540-2¼ 763 (800-2¼)	1700-3 923 (1000-3)	Knots	60 90 120 150 180
					Min:Seq	8:42 5:48 4:21 3:29 2:54

ARDMORE, OKLAHOMA
Amdt 1C 02DEC21

34°18'N-97°01'W

ARDMORE MUNI (ADM)

VOR-B

SC-1, 10 JUL 2025 to 07 AUG 2025

SC-1, 10 JUL 2025 to 07 AUG 2025

