

ARDMORE, OKLAHOMA

AL-22 (FAA)

25051

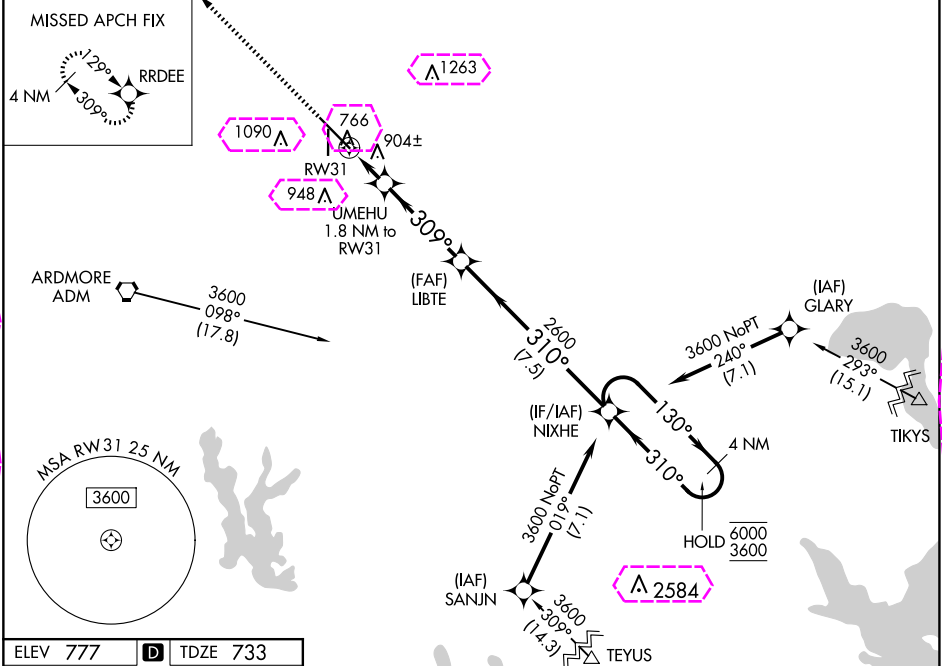
WAAS CH <b>69625</b> <b>W31A</b>	APP CRS <b>309°</b>	Rwy Idg <b>9002</b> TDZE <b>733</b> Apt Elev <b>777</b>
--	------------------------	---

# RNAV (GPS) RWY 31

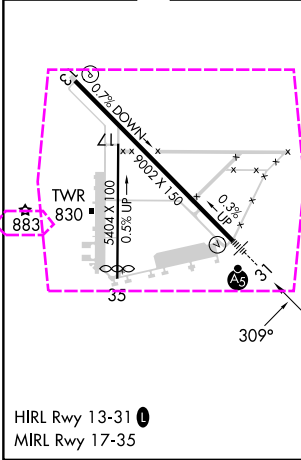
ARDMORE MUNI (ADM)

RNP APCH - GPS.		MALSR	MISSED APPROACH: Climb to 3600 direct RRDEE and hold.
<p><b>T</b> For uncompensated Baro-VNAV systems, LNAV/VNAV NA below -16°C or above 54°C. Inop table does not apply to LPV all Cats. For inop ALS, increase LNAV/VNAV all Cats and LNAV Cats C and D visibility to 1½ SM.</p>			

ATIS <b>125.6</b>	FORT WORTH CENTER <b>124.75 323.0</b>	ARDMORE TOWER ★ <b>118.5 (CTAF) 0 257.7</b>	GND CON <b>121.8</b>	UNICOM <b>122.95</b>
----------------------	--	--	-------------------------	-------------------------



ELEV <b>777</b>	<b>D</b>	TDZE <b>733</b>
-----------------	----------	-----------------



3600

↑

RRDEE

UMEHU

1.8 NM to RW31

LIBTE

2600

NIXHE

4 NM Holding Pattern

1.2 NM to RW31

↓

309°

↗

130° →

↘

310°

6000

3600

GP 3.00°

TCH 49

1.2 NM

0.6

3.9 NM

7.5 NM

1340

2600

RW31

↖

1.2 NM

0.6

3.9 NM

7.5 NM

CATEGORY	A	B	C	D
LPV DA	933-½		200 (200-½)	
LNAV/VNAV DA	1200-1		467 (500-1)	
LNAV MDA	1160-½	427 (400-½)	1160-¾	427 (400-¾)
CIRCLING	1300-1 523 (600-1)	1440-1 663 (700-1)	1500-2 723 (800-2)	1700-3 923 (1000-3)

ARDMORE, OKLAHOMA  
Amdt 2 21MAR24

34°18'N-97°01'W

# ARDMORE MUNI (ADM)

## RNAV (GPS) RWY 31

