

ARDMORE, OKLAHOMA

AL-22 (FAA)

25051

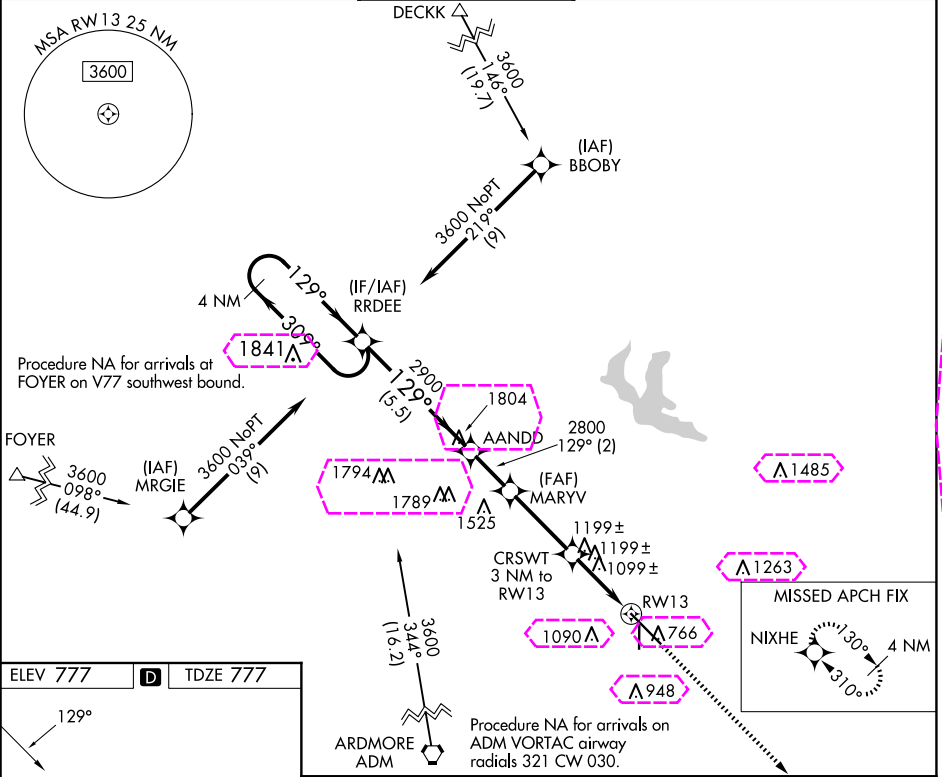
WAAS CH 53725 W13A	APP CRS 129°	Rwy Idg 9002 TDZE 777 Apt Elev 777
--	------------------------	---

RNAV (GPS) RWY 13

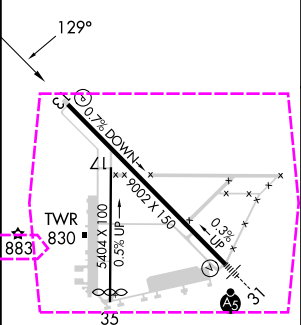
ARDMORE MUNI (ADM)

RNP APCH.	<p>MISSED APPROACH: Climb to 3600 direct NIXHE and hold.</p>
<p>▼ Rwy 13 helicopter visibility reduction below 1 SM NA. When local altimeter setting not received, use Ardmore Downtown Exec altimeter setting and increase all MDA 40 feet. Procedure NA at night.</p>	

ATIS 125.6	FORT WORTH CENTER 124.75 323.0	ARDMORE TOWER ★ 118.5 (CTAF) 0 257.7	GND CON 121.8	UNICOM 122.95
----------------------	--	--	-------------------------	-------------------------



ELEV 777	TDZE 777
----------	----------



CATEGORY	A	B	C	D
LP MDA	1360-1	583 (600-1)	1360-1¾	583 (600-1¾)
LNAV MDA	1460-1	683 (700-1)	1460-2	683 (700-2)

ARDMORE, OKLAHOMA
Orig-C 15AUG19

34°18'N-97°01'W

RNAV (GPS) RWY 13

SC-1, 10 JUL 2025 to 07 AUG 2025

SC-1, 10 JUL 2025 to 07 AUG 2025

ARDMORE, OKLAHOMA

AL-22 (FAA)

25219

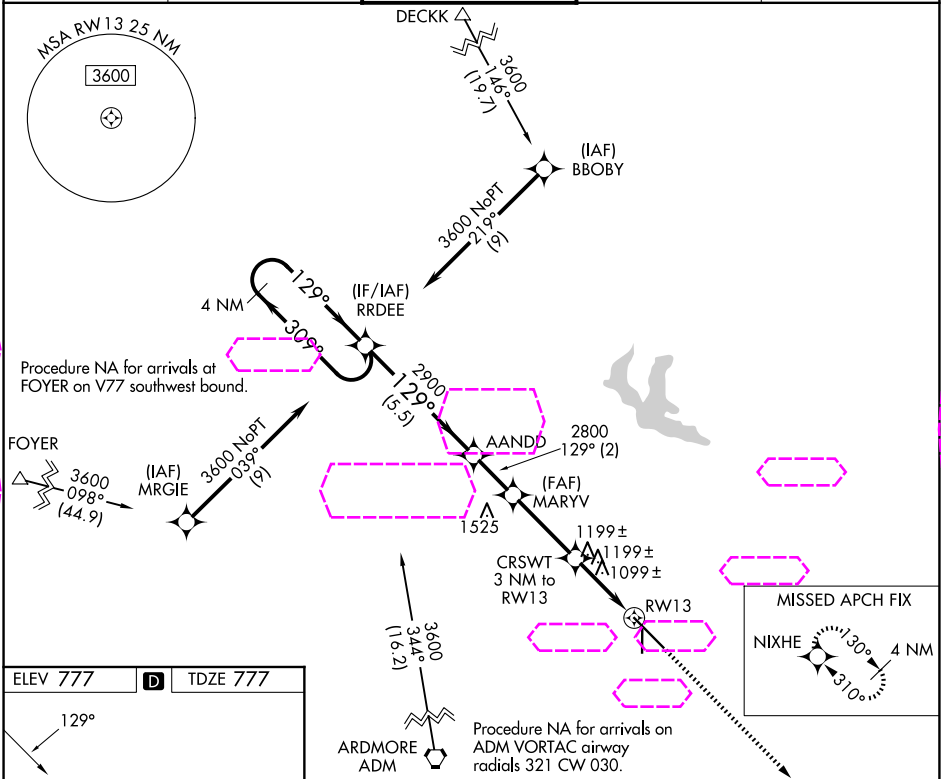
WAAS CH 53725 W13A	APP CRS 129°	Rwy Ldg 9002 TDZE 777 Apt Elev 777
--	------------------------	---

RNAV (GPS) RWY 13

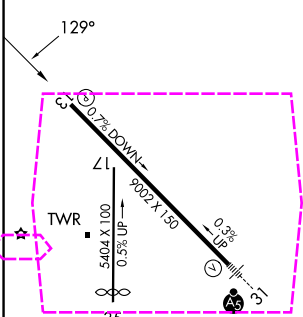
ARDMORE MUNI (ADM)

RNP APCH.	MISSED APPROACH: Climb to 3600 direct NIXHE and hold.
<p>▼ Rwy 13 helicopter visibility reduction below 1 SM NA. When local altimeter setting not received, use Ardmore Downtown Exec altimeter setting and increase all MDA 40 feet. Procedure NA at night.</p>	

ATIS 125.6	FORT WORTH CENTER 124.75 323.0	ARDMORE TOWER ★ 118.5 (CTAF) 0 257.7	GND CON 121.8	UNICOM 122.95
----------------------	--	--	-------------------------	-------------------------



ELEV 777	D	TDZE 777
----------	---	----------



HIRL Rwy 13-31	MIRL Rwy 17-35
----------------	----------------

4 NM Holding Pattern	RRDEE	AANDD	MARYV	CRSWT 3 NM to RW13	RW13
3600	309° 129°	129°	2900 2800	1780	
	5.5 NM	2 NM	3.2 NM	3 NM	
CATEGORY	A	B	C	D	
LP MDA	1360-1	583 (600-1)	1360-1¾	583 (600-1¾)	
LNAV MDA	1460-1	683 (700-1)	1460-2	683 (700-2)	

ARDMORE, OKLAHOMA
Orig-C 15AUG19

34°18'N-97°01'W

ARDMORE MUNI (ADM)
RNAV (GPS) RWY 13

SC-1, 07 AUG 2025 to 04 SEP 2025

SC-1, 07 AUG 2025 to 04 SEP 2025