

ARDMORE, OKLAHOMA

AL-22 (FAA)

25051

LOC I-AIW 108.9	APP CRS 309°	Rwy Idg 9002 TDZE 733 Apt Elev 777
---------------------------	------------------------	--

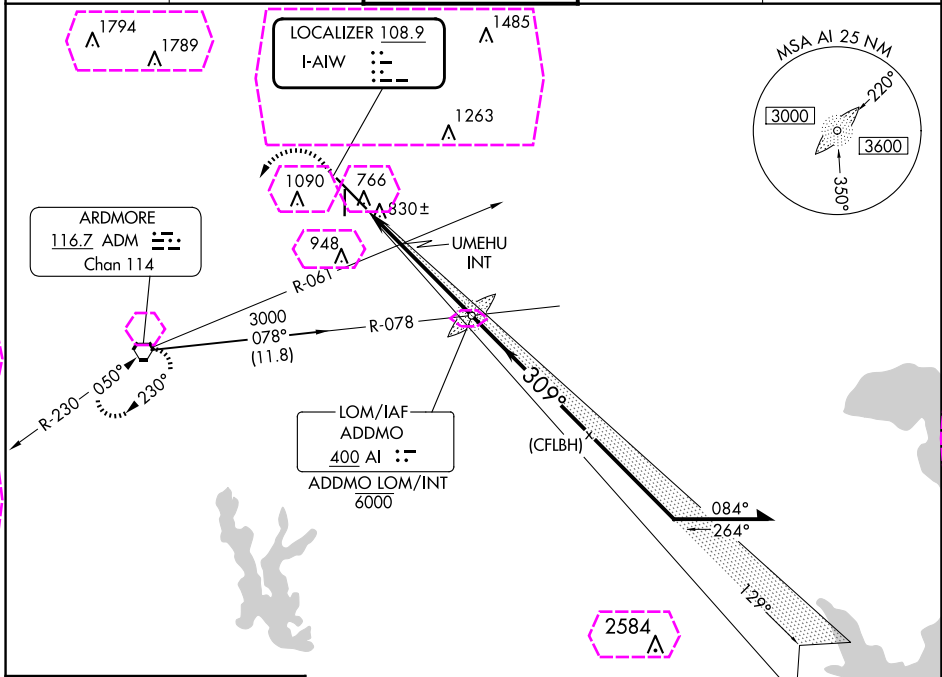
ILS or LOC RWY 31

ARDMORE MUNI (ADM)

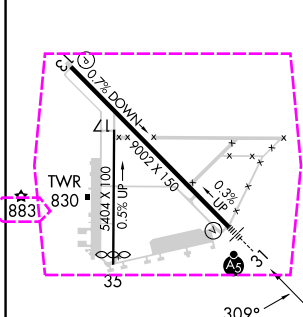
Autopilot coupled approach NA below 1360. Inop table does not apply to S-ILS 31 all Cats, S-LOC 31 Cats A and B, and UMEHU fix minimums S-LOC 31 Cats C and D visibility to 1 SM.

MALSR MISSED APPROACH: Climb to 2000 then climbing left turn to 3000 direct ADM VORTAC and hold.



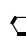
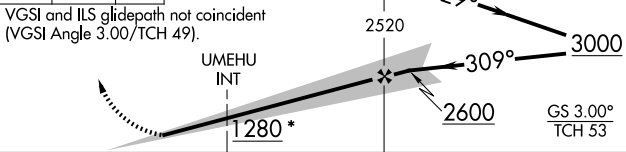
ATIS 125.6	FORT WORTH CENTER 124.75 323.0	ARDMORE TOWER ★ 118.5 (CTAF) 257.7	GND CON 121.8	UNICOM 122.95
----------------------	--	--	-------------------------	-------------------------



ELEV 777 TDZE 733



HIRL Rwy 13-31	MIRL Rwy 17-35
FAF to MAP 5.4 NM	
Knots	60 90 120 150 180
Min:Sec	5:24 3:36 2:42 2:10 1:48

2000	3000	ADM	*1320 when using Ardmore Downtown Executive altimeter setting.	
				
VGSI and ILS glidepath not coincident (VGSI Angle 3.00/TCH 49).				
				
CATEGORY	A	B	C	D
S-ILS 31	936-1/2		203 (200-1/2)	
S-LOC 31*	1280-1/2	547 (600-1/2)	1280-1 1/8	547 (600-1 1/8)
CIRCLING	1300-1 523 (600-1)	1440-1 663 (700-1)	1500-2 723 (800-2)	1700-3 923 (1000-3)
UMEHU FIX MINIMUMS (DUAL RECEIVERS REQUIRED)				
S-LOC 31	1080-1/2	347 (400-1/2)	1080-5/8	347 (400-5/8)
CIRCLING	1300-1 523 (600-1)	1440-1 663 (700-1)	1500-2 723 (800-2)	1700-3 923 (1000-3)

ARDMORE, OKLAHOMA
Amdt 6 21MAR24

34°18'N-97°01'W

ARDMORE MUNI (ADM)
ILS or LOC RWY 31

ARDMORE, OKLAHOMA

AL-22 (FAA)

25219

LOC I-AIW 108.9	APP CRS 309°	Rwy Ldg TDZE Apt Elev	9002 733 777
---------------------------	------------------------	-----------------------------	---

ILS or LOC RWY 31

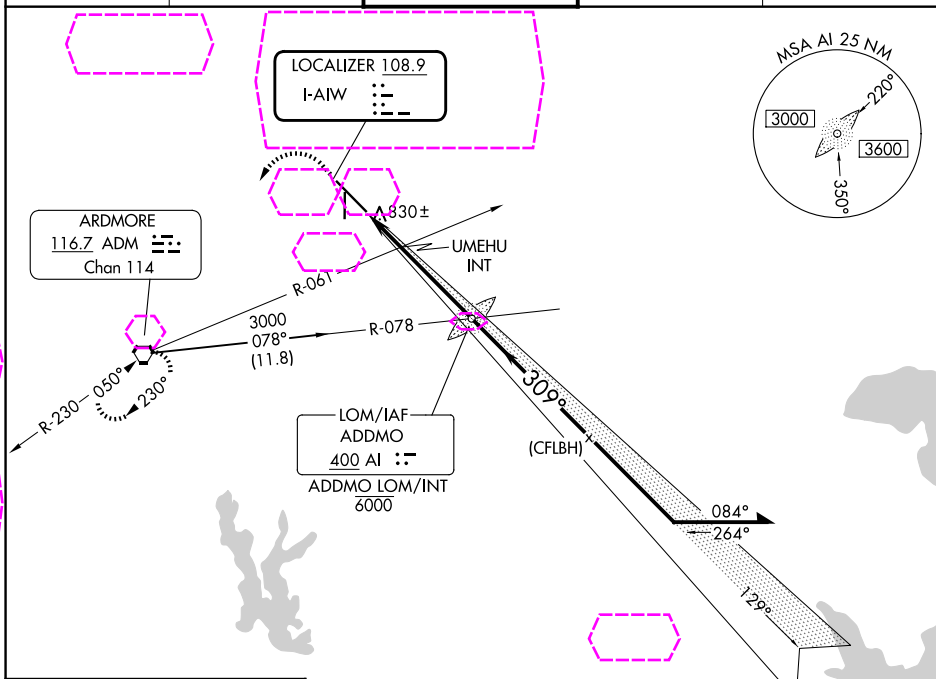
ARDMORE MUNI (ADM)

Autopilot coupled approach NA below 1360. Inop table does not apply to S-ILS 31 all Cats, S-LOC 31 Cats A and B, and UMEHU fix minimums S-LOC 31 Cats C and D visibility to 1 SM.



MISSED APPROACH: Climb to 2000 then climbing left turn to 3000 direct ADM VORTAC and hold.

ATIS 125.6	FORT WORTH CENTER 124.75 323.0	ARDMORE TOWER ★ 118.5 (CTAF) 0 257.7	GND CON 121.8	UNICOM 122.95
----------------------	--	--	-------------------------	-------------------------



ELEV 777 **D** TDZE 733

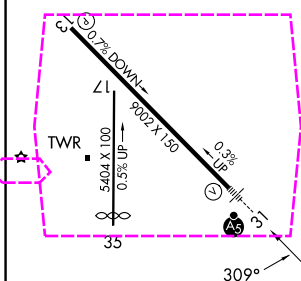
2000 3000 ADM *1320 when using Ardmore Downtown Executive altimeter setting.

AI LOM ADDMO INT 6000 129° 3000 3000 2520 2600 309° 1280* 1.8 NM 3.6 NM

VGSI and ILS glidepath not coincident (VGSI Angle 3.00/TCH 49).

UMEHU INT 1280* 129° 309° 2600 3000 GS 3.00° TCH 53

CATEGORY	A	B	C	D
S-ILS 31	936-1/2		203 (200-1/2)	
S-LOC 31*	1280-1/2	547 (600-1/2)	1280-1 1/8	547 (600-1 1/8)
CIRCLING	1300-1 523 (600-1)	1440-1 663 (700-1)	1500-2 723 (800-2)	1700-3 923 (1000-3)
UMEHU FIX MINIMUMS (DUAL RECEIVERS REQUIRED)				
S-LOC 31	1080-1/2	347 (400-1/2)	1080-5/8	347 (400-5/8)
CIRCLING	1300-1 523 (600-1)	1440-1 663 (700-1)	1500-2 723 (800-2)	1700-3 923 (1000-3)



HIRL Rwy 13-31

MIRL Rwy 17-35

FAF to MAP 5.4 NM

Knots	60	90	120	150	180
Min:Sec	5:24	3:36	2:42	2:10	1:48

ARDMORE, OKLAHOMA
Amdt 6 21MAR24

34°18'N-97°01'W

ARDMORE MUNI (ADM)

ILS or LOC RWY 31

SC-1, 07 AUG 2025 to 04 SEP 2025

SC-1, 07 AUG 2025 to 04 SEP 2025