


BINGHAMTON, NEW YORK

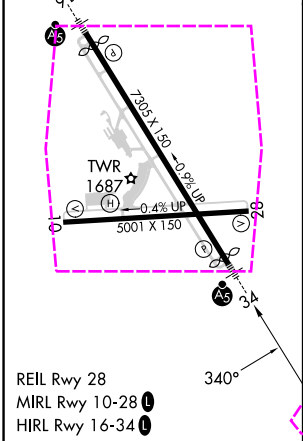
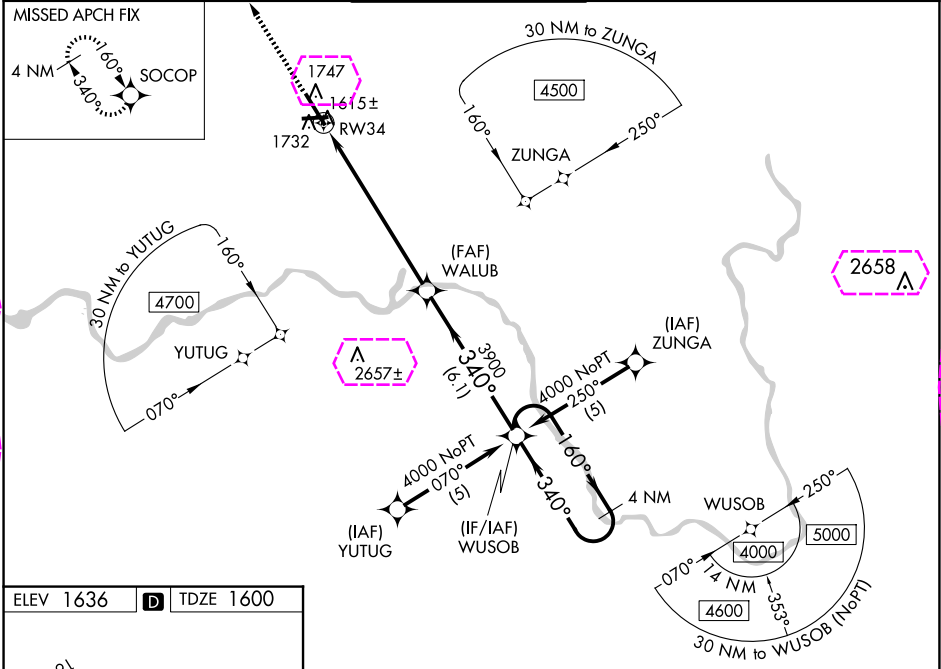
AL-20 (FAA)

24081

WAAS CH 93915 W34A	APP CRS 340°	Rwy ldg TDZE 1600 Apt Elev 1636
--	------------------------	---

RNAV (GPS) RWY 34
GREATER BINGHAMTON/EDWIN A LINK FLD (BGM)

RNP APCH.			<div>MALSR</div> <div></div>	<div>MISSED APPROACH:</div> <div>Climb to 3900 direct SOCOP and hold.</div>	
<div><div><div>▼</div><div>▲</div></div><div>For uncompensated Baro-VNAV systems, LNAV/VNAV NA below -18°C (0°F) or above 46°C (114°F). When local altimeter setting not received, use Ithaca altimeter setting and increase all DA 138 feet and all MDA 140 feet, increase LPV all Cats, LNAV Cats C and D and Circling Cat C and D visibility ½ SM, and LNAV/VNAV all Cats visibility ½ SM. For inoperative MALSR when using Ithaca altimeter setting increase LPV all Cats visibility to RVR 6000. Baro-VNAV and VDP NA when using Ithaca altimeter setting.</div></div>					
ATIS 128.15	BINGHAMTON APP CON ★ 118.6 257.625	BINGHAMTON TOWER ★ 119.3 (CTAF) 0 239.25	GND CON 121.9	CLNC DEL 125.05	UNICOM 122.95



3900 SOCOP		VGSI and RNAV Glidepath not coincident (VGSI Angle 3.00/TCH 64).		4 NM Holding Pattern
*LNAV only		WALUB		160° → 4000
*1.3 NM to RW34		3900		← 340°
→ 1.3 → 5.8 NM → 6.1 NM →		GP 3.00° TCH 44		
CATEGORY	A	B	C	D
LPV DA	1800/24		200 (200-½)	
LNAV/VNAV DA	2082/60		482 (500-1¼)	
LNAV MDA	2040/24	440 (500-½)	2040/40 440 (500-¾)	2040/50 440 (500-1)
CIRCLING	2120-1	484 (500-1)	2120-1½ 484 (500-1½)	2200-2 564 (600-2)

BINGHAMTON, NEW YORK
Amdt 1A 23APR20

GREATER BINGHAMTON/EDWIN A LINK FLD (BGM)
42°13'N-75°59'W
RNAV (GPS) RWY 34

BINGHAMTON, NEW YORK

AL-20 (FAA)

25219

WAAS CH 93915 W34A	APP CRS 340°	Rwy Ldg TDZE 1600 Apt Elev 1636
--	------------------------	---

RNAV (GPS) RWY 34

GREATER BINGHAMTON/EDWIN A LINK FLD (BGM)

RNP APCH.

▼

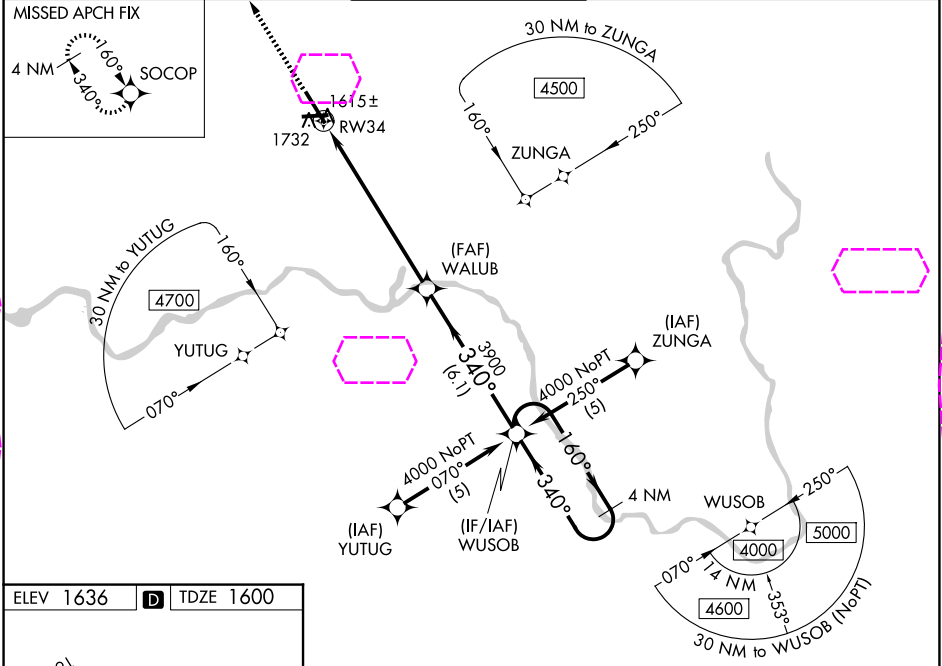
▲

For uncompensated Baro-VNAV systems, LNAV/VNAV NA below -18°C (0°F) or above 46°C (114°F). When local altimeter setting not received, use Ithaca altimeter setting and increase all DA 138 feet and all MDA 140 feet, increase LPV all Cats, LNAV Cats C and D and Circling Cat C and D visibility ½ SM, and LNAV/VNAV all Cats visibility ½ SM. For inoperative MALSR when using Ithaca altimeter setting increase LPV all Cats visibility to RVR 6000. Baro-VNAV and VDP NA when using Ithaca altimeter setting.

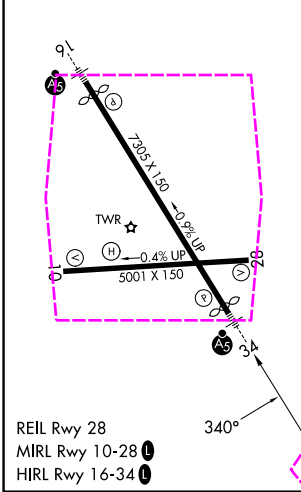
MALSR




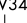
MISSED APPROACH:
Climb to 3900 direct
SOCOP and hold.

ATIS 128.15	BINGHAMTON APP CON ★ 118.6 257.625	BINGHAMTON TOWER ★ 119.3 (CTAF) 239.25	GND CON 121.9	CLNC DEL 125.05	UNICOM 122.95
-----------------------	--	--	-------------------------	---------------------------	-------------------------



ELEV 1636	D	TDZE 1600
-----------	----------	-----------



3900	SOCOP	VGSI and RNAV Glidepath not coincident (VGSI Angle 3.00/TCH 64).		4 NM Holding Pattern
				
*LNAV only		WALUB	WUSOB	
*1.3 NM to RW34			160° →	4000
		340°	← 340°	GP 3.00° TCH 44
	1.3	5.8 NM	6.1 NM	
CATEGORY	A	B	C	D
LPV DA	1800/24		200 (200-½)	
LNAV/ VNAV DA	2082/60		482 (500-1¼)	
LNAV MDA	2040/24	440 (500- ½)	2040/40 440 (500-¾)	2040/50 440 (500-1)
CIRCLING	2120-1	484 (500-1)	2120-1½ 484 (500-1½)	2200-2 564 (600-2)

BINGHAMTON, NEW YORK
Amdt 1A 23APR20

GREATER BINGHAMTON/EDWIN A LINK FLD (BGM)
42°13'N-75°59'W
RNAV (GPS) RWY 34

NE-2, 07 AUG 2025 to 04 SEP 2025

NE-2, 07 AUG 2025 to 04 SEP 2025