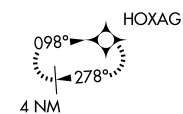
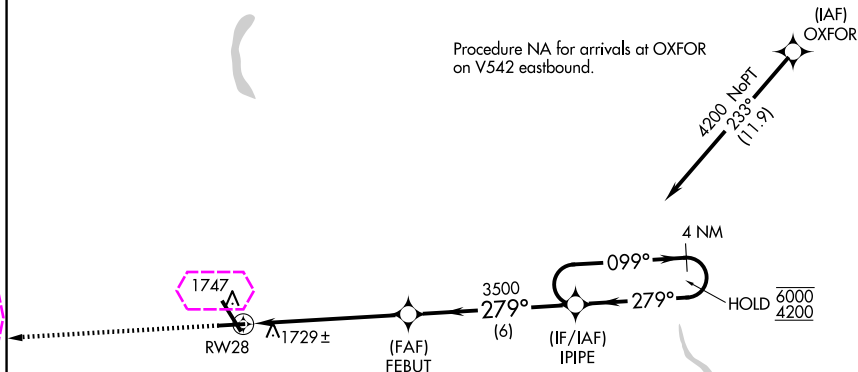


RNAV (GPS) RWY 28

GREATER BINGHAMTON/EDWIN A LINK FLD (BGM)

MISSED APPROACH: Climb to 3900 direct HOXAG and hold.

UNICOM
122.95 $\Delta 2657 \pm$

MSA RW28 25 NM Δ 2658

ELEV	1636	D	TDZE	1587
------	------	----------	------	------

4 NM
Holding Pattern

* LNAV only

*1.2 NM
to RW28

FEBUT

IPIPE

70°

077	→	8000
← 279		4200

-219

2500

GP 3.00°
TCH 45

1.2 4.7 nm 6 nm


CATEGORY	A	B	C	D

LPV	DA	1837- ³ / ₄ 250 (300- ³ / ₄)
-----	----	---

LNAV/DA	2081-13% 504 (500-13%)
---------	------------------------

VNAV	DA	2071-178	304 (300-178)

LNAV MDA	2000-1 413 (400-1)	2000-1½ 413 (400-1½)
----------	--------------------	----------------------

 CIRCLING	2120-1 484 (500-1)	2120-1½ (214500-1½)	2200-2 514 (100-2)
--	--------------------	---------------------	--------------------

REIL Rwy 28
MIRL Rwy 10-28 **L**
HIRL Rwy 16-34 **L**

Amdt 3 10SEP20

GREATER BINGHAMTON/EDWIN A LINK FLD (BGM)

42°13'N-75°59'W

RNAV (GPS) RWY 28

NE-2, 10 JUL 2025 to 07 AUG 2025

NE-2, 10 JUL 2025 to 07 AUG 2025

BINGHAMTON, NEW YORK

AL-20 (FAA)

25219

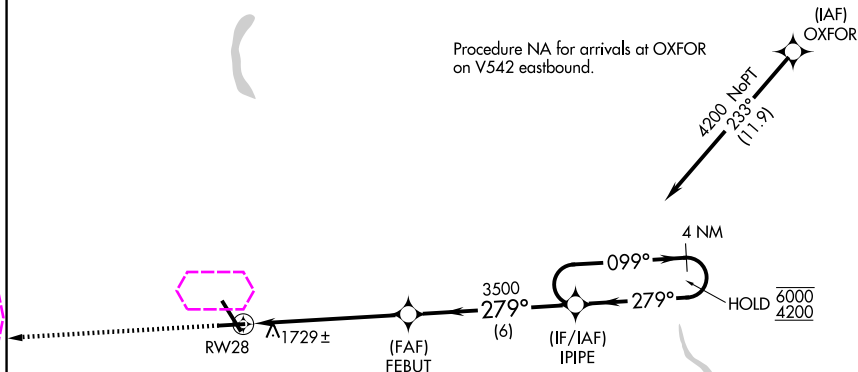
WAAS CH 82120 W28A	APP CRS 279°	Rwy Ldg TDZE Apt Elev	5001 1587 1636
--	------------------------	-----------------------------	---

RNAV (GPS) RWY 28

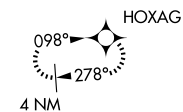
GREATER BINGHAMTON/EDWIN A LINK FLD (BGM)

RNP APCH.		MISSED APPROACH: Climb to 3900 direct HOXAG and hold.			
<div><div></div><div></div></div>	For uncompensated Baro-VNAV systems, LNAV/VNAV NA below -21°C or above 54°C.				
ATIS 128.15	BINGHAMTON APP CON ★ 118.6 257.625	BINGHAMTON TOWER ★ 119.3 (CTAF) 0 239.25	GND CON 121.9	CLNC DEL 125.05	UNICOM 122.95

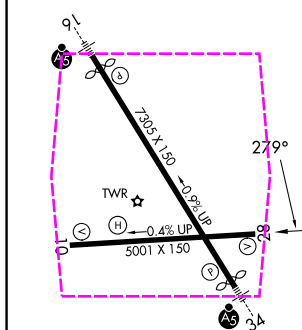
Procedure NA for arrivals at OXFORD on V542 eastbound.



MISSED APCH FIX



ELEV 1636 D TDZE 1587



REIL Rwy 28
MIRL Rwy 10-28
HIRL Rwy 16-34

3900

↑

HOXAG

✦

4 NM Holding Pattern

099° → 6000

← 279° 4200

* LNAV only

* 1.2 NM to RW28

RW28

FEBUT 3500

3500

279°

IPIPE

GP 3.00° TCH 45

1.2

4.7 NM

6 NM

CATEGORY	A	B	C	D
LPV DA	1837-¾ 250 (300-¾)			
LNAV/VNAV DA	2091-1⅜ 504 (500-1⅜)			
LNAV MDA	2000-1	413 (400-1)	2000-1½	413 (400-1½)
CIRCLING	2120-1	484 (500-1)	2120-1½ 484 (500-1½)	2200-2 564 (600-2)

BINGHAMTON, NEW YORK

Amdt 3 10SEP20

GREATER BINGHAMTON/EDWIN A LINK FLD (BGM)

42°13'N-75°59'W

RNAV (GPS) RWY 28

NE-2, 07 AUG 2025 to 04 SEP 2025