

BINGHAMTON, NEW YORK

AL-20 (FAA)

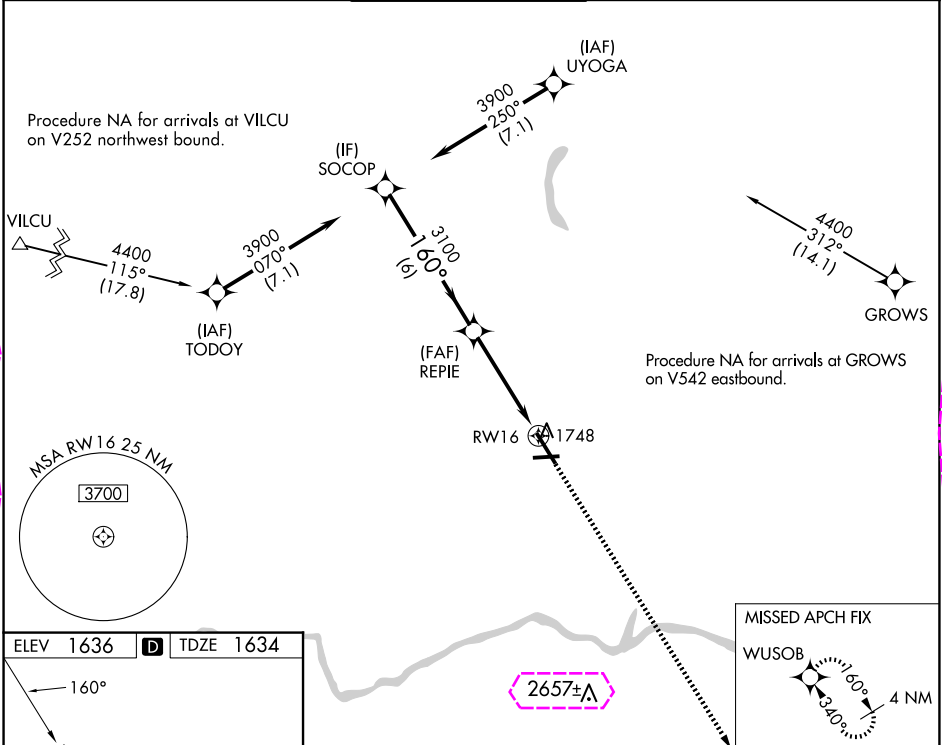
24025

WAAS CH <b>66015</b> <b>W16A</b>	APP CRS <b>160°</b>	Rwy Idg <b>6905</b> TDZE <b>1634</b> Apt Elev <b>1636</b>
--	------------------------	---

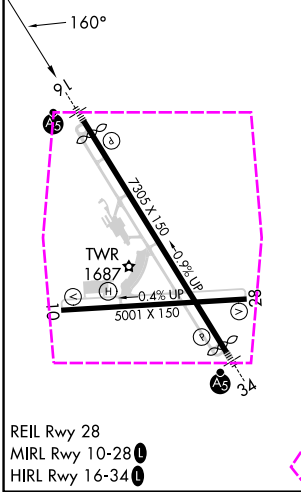
# RNAV (GPS) RWY 16

GREATER BINGHAMTON/EDWIN A LINK FLD (BGM)

RNP APCH. For uncompensated Baro-VNAV systems, LNAV/VNAV NA below -21°C or above 54°C. For inop ALS, increase LNAV/VNAV all Cats visibility to RVR 5500.				MALSRR	MISSED APPROACH: Climb to 4000 direct WUSOB and hold.
ATIS <b>128.15</b>	BINGHAMTON APP CON * <b>118.6 257.625</b>	BINGHAMTON TOWER * <b>119.3 (CTAF) 239.25</b>	GND CON <b>121.9</b>	CLNC DEL <b>125.05</b>	UNICOM <b>122.95</b>



ELEV 1636	D	TDZE 1634
-----------	---	-----------



SOCOP		VGSI and RNAV glidepath not coincident (VGSI Angle 3.00/TCH 61).		4000 WUSOB
3900		160°		↑
GP 3.00°		3100		*LNAV only
TCH 52		6 NM		↑
		3.3 NM		↑
		1.1 NM		↑
		RW16		↑
CATEGORY	A	B	C	D
LPV DA	1884/24 250 (300-1/2)			
LNAV/ VNAV DA	1984/30 350 (400-3/4)			
LNAV MDA	2060/24 426 (500-1/2)		2060/40 426 (500-3/4)	
<b>CIRCLING</b>	2120-1 484 (500-1)		2120-1 1/2 2200-2 484 (500-1 1/2) 564 (600-2)	

BINGHAMTON, NEW YORK  
Amdt 2 10SEP20

GREATER BINGHAMTON/EDWIN A LINK FLD (BGM)  
42° 13'N-75° 59'W  
**RNAV (GPS) RWY 16**

NE-2, 10 JUL 2025 to 07 AUG 2025

NE-2, 10 JUL 2025 to 07 AUG 2025

BINGHAMTON, NEW YORK

AL-20 (FAA)

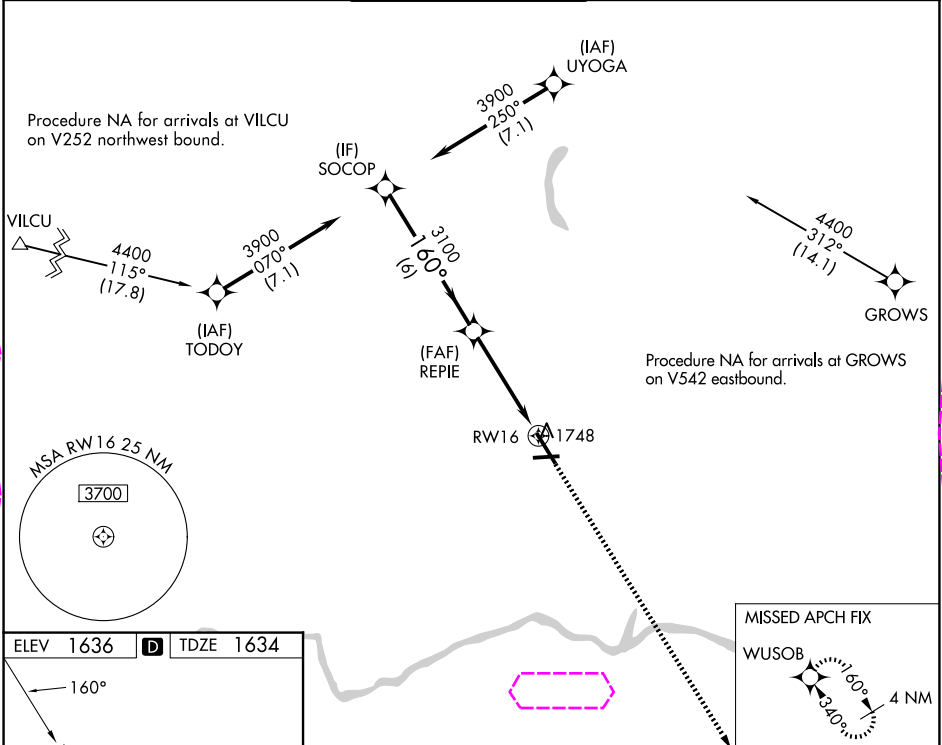
25219

WAAS CH <b>66015</b> <b>W16A</b>	APP CRS <b>160°</b>	Rwy Ldg TDZE <b>1634</b> Apt Elev <b>1636</b>
--	------------------------	---

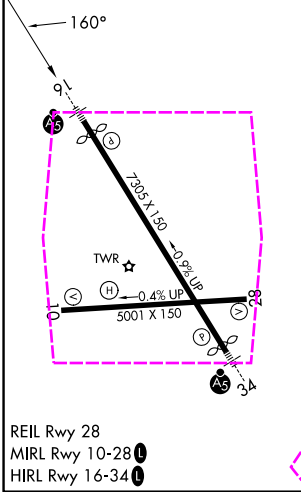
RNAV (GPS) RWY 16

GREATER BINGHAMTON/EDWIN A LINK FLD (BGM)

RNP APCH.					MALSR		MISSED APPROACH: Climb to 4000 direct WUSOB and hold.				
<div><div><div></div><div></div></div><div>For uncompensated Baro-VNAV systems, LNAV/VNAV NA below -21°C or above 54°C. For inop ALS, increase LNAV/VNAV all Cats visibility to RVR 5500.</div></div>					<div><div><div></div><div></div></div></div>						
ATIS 128.15		BINGHAMTON APP CON ★ 118.6 257.625		BINGHAMTON TOWER ★ 119.3 (CTAF) 239.25		GND CON 121.9		CLNC DEL 125.05		UNICOM 122.95	



ELEV 1636	D	TDZE 1634
-----------	---	-----------



SOCOP		VGSI and RNAV glidepath not coincident (VGSI Angle 3.00/TCH 61).		4000 WUSOB
3900		160°		*1.1 NM to RW16
GP 3.00° TCH 52		3100		*LNAV only
6 NM		3.3 NM		RW16
CATEGORY	A	B	C	D
LPV DA	1884/24 250 (300-1/2)			
LNAV/VNAV DA	1984/30 350 (400-3/4)			
LNAV MDA	2060/24 426 (500-1/2)		2060/40 426 (500-3/4)	
CIRCLING	2120-1 484 (500-1)		2120-1 1/2 484 (500-1 1/2)	
			2200-2 564 (600-2)	

BINGHAMTON, NEW YORK  
Amdt 2 10SEP20

GREATER BINGHAMTON/EDWIN A LINK FLD (BGM)  
42° 13'N-75° 59'W  
RNAV (GPS) RWY 16

NE-2, 07 AUG 2025 to 04 SEP 2025

NE-2, 07 AUG 2025 to 04 SEP 2025