

BINGHAMTON, NEW YORK

AL-20 (FAA)

24025

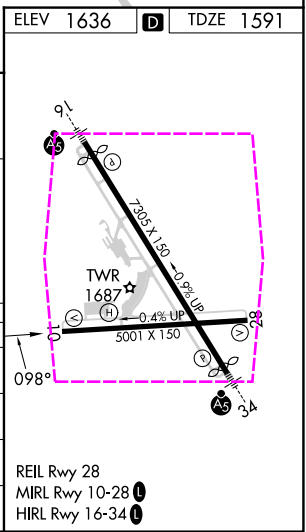
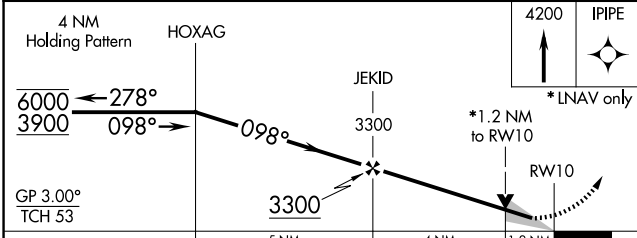
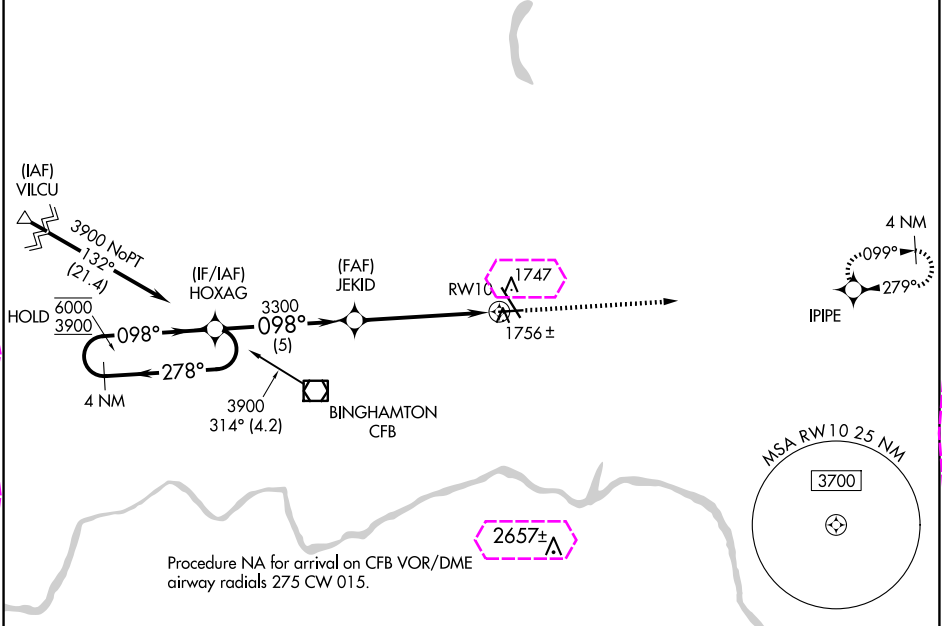
WAAS CH 93820 W10A	APP CRS 098°	Rwy Idg TDZE 1591 Apt Elev 1636
--	------------------------	---

RNAV (GPS) RWY 10

GREATER BINGHAMTON/EDWIN A LINK FLD (BGM)

RNP APCH. For uncompensated Baro-VNAV systems, LNAV/VNAV NA below -21°C or above 54°C.	MISSED APPROACH: Climb to 4200 direct IPIPE and hold.
--	--

ATIS 128.15	BINGHAMTON APP CON * 118.6 257.625	BINGHAMTON TOWER * 119.3 (CTAF) 0 239.25	GND CON 121.9	CLNC DEL 125.05	UNICOM 122.95
-----------------------	--	--	-------------------------	---------------------------	-------------------------



CATEGORY	A	B	C	D
LPV DA	1841-3/4	250 (300-3/4)		
LNAV/VNAV DA	1937-1	346 (400-1)		
LNAV MDA	2020-1 429 (400-1)	2020-1 1/4 429 (400-1 1/4)		
CIRCLING	2120-1 484 (500-1)	2120-1 1/2 484 (500-1 1/2)	2200-2 564 (600-2)	

BINGHAMTON, NEW YORK

Amdt 1 10SEP20

GREATER BINGHAMTON/EDWIN A LINK FLD (BGM)

42°13'N - 75°59'W

RNAV (GPS) RWY 10

NE-2, 10 JUL 2025 to 07 AUG 2025

NE-2, 10 JUL 2025 to 07 AUG 2025

BINGHAMTON, NEW YORK

AL-20 (FAA)

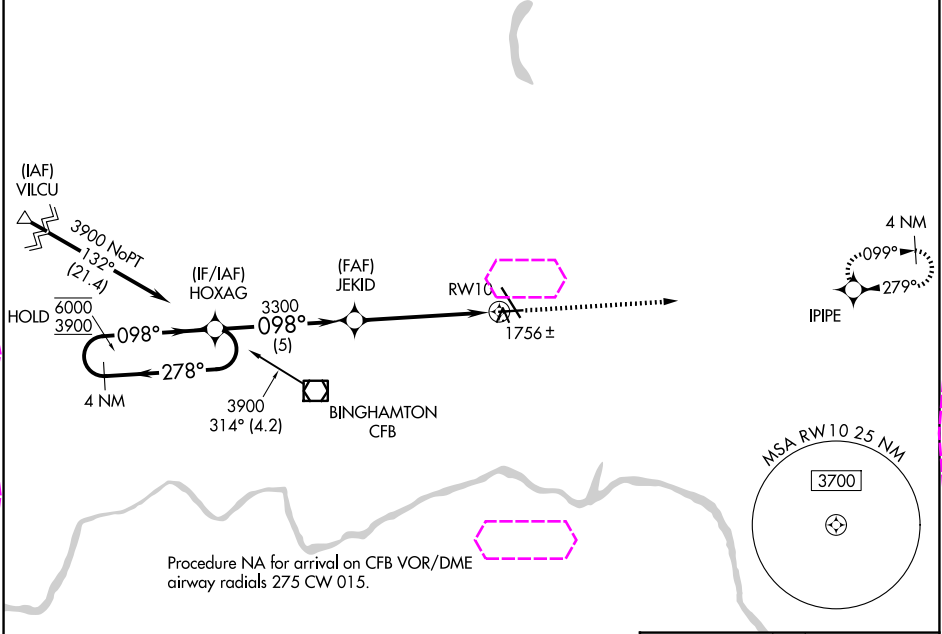
25219

WAAS CH 93820 W10A	APP CRS 098°	Rwy Ldg TDZE Apt Elev	5001 1591 1636
--	------------------------	-----------------------------	---

RNAV (GPS) RWY 10

GREATER BINGHAMTON/EDWIN A LINK FLD (BGM)

RNP APCH. For uncompensated Baro-VNAV systems, LNAV/VNAV NA below -21°C or above 54°C.		MISSED APPROACH: Climb to 4200 direct IPIPE and hold.			
ATIS 128.15	BINGHAMTON APP CON * 118.6 257.625	BINGHAMTON TOWER * 119.3 (CTAF) 0 239.25	GND CON 121.9	CLNC DEL 125.05	UNICOM 122.95



ELEV 1636 **D** TDZE 1591

4200 IPIPE

4 NM Holding Pattern

HOXAG

JEKID

RW10

GP 3.00°
TCH 53

5 NM 4 NM 1.2 NM

CATEGORY	A	B	C	D
LPV DA	1841-3/4	250 (300-3/4)		
LNAV/VNAV DA	1937-1	346 (400-1)		
LNAV MDA	2020-1 429 (400-1)	2020-1 1/4 429 (400-1 1/4)		
CIRCLING	2120-1 484 (500-1)	2120-1 1/2 484 (500-1 1/2)	2200-2 564 (600-2)	

REIL Rwy 28
MIRL Rwy 10-28
HIRL Rwy 16-34

BINGHAMTON, NEW YORK

Amdt 1 10SEP20

GREATER BINGHAMTON/EDWIN A LINK FLD (BGM)

42°13'N - 75°59'W

RNAV (GPS) RWY 10

NE-2, 07 AUG 2025 to 04 SEP 2025

NE-2, 07 AUG 2025 to 04 SEP 2025