

LOC I-BGM	APP CRS	Rwy Idg	<b>7100</b>
<b><u>110.3</u></b>	<b>340°</b>	TDZE	<b>1601</b>
		Apt Elev	<b>1636</b>

ILS or LOC RWY 34  
GREATER BINGHAMTON/EDWIN A LINK FLD (BGM)

**T  
A**

MALSR  
A5

**MISSED APPROACH:** Climb to 2200 then climbing left turn to 3900 direct CFB VOR/DME and hold, continue climb-in-hold to 3900.

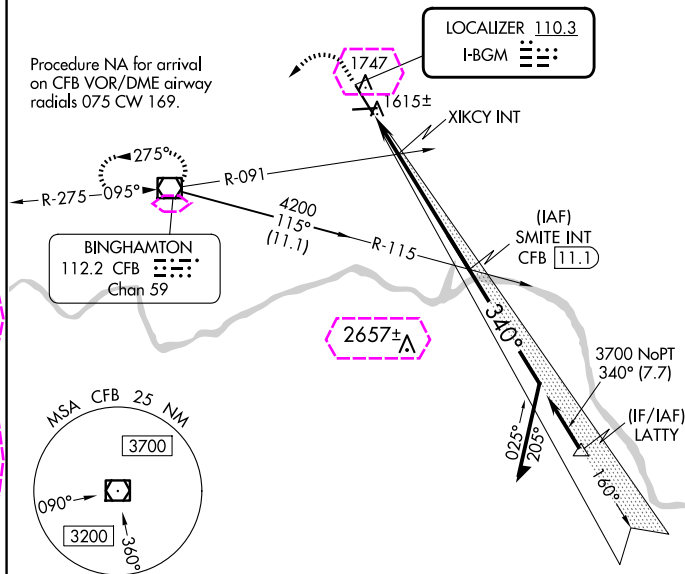
ATIS  
128.15

BINGHAMTON APP CON ★  
118.6 257.625

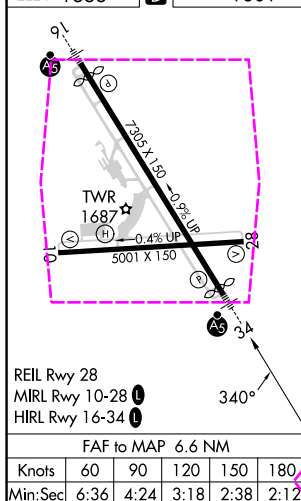
BINGHAMTON TOWER ★  
119.3 (CTAF) **L** 239.25


GND CON  
**121.9**

CLNC DEL  
**125.05**

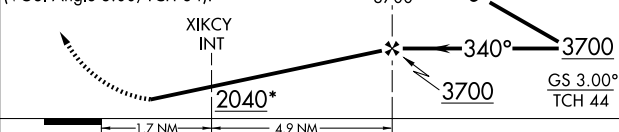
UNICOM  
122.95

ELEV 1636	<b>D</b>	TDZE 1601
-----------	----------	-----------



2200 ↑	3900 ↘	CFB 	* LOC only. * 2180 when using Ithaca altimeter setting.	SMITE INT ↓	Remain within 10 NM
-----------	-----------	--	---	-------------------	------------------------

VGSI and ILS glidepath not coincident  
(VGSI Angle 3.00/TCH 64).



CATEGORY	A	B	C	D
S-ILS 34	1851/24 250 (300-½)			
S-LOC 34	2040/24 439 (500-½)	2040/40 439 (500-¾)		
CIRCLING	2120-1 484 (500-1)	2120-1½ 484 (500-1½)	2200-2 564 (600-2)	
XIKCY FIX MINIMUMS				
S-LOC 34	1940/24 339 (400-½)	1940/26 339 (400-½)		
CIRCLING	2120-1 484 (500-1)	2120-1½ 484 (500-1½)	2200-2 564 (600-2)	

BINGHAMTON, NEW YORK  
Amdt 5 10SEP20

GREATER BINGHAMTON/EDWIN A LINK FLD (BGM)  
42°13'N-75°59'W ILS or LOC RWY 34

BINGHAMTON, NEW YORK


AL-20 (FAA)

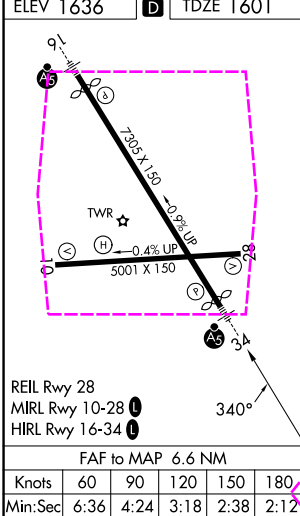
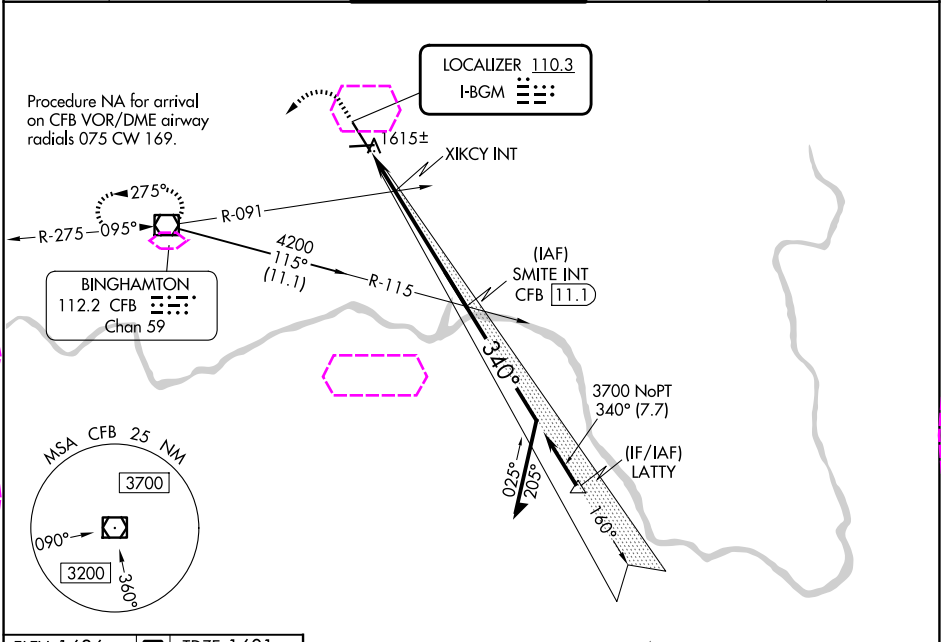
25219

LOC I-BGM <b>110.3</b>	APP CRS <b>340°</b>	Rwy Ldg TDZE Apt Elev	<b>7100</b> <b>1601</b> <b>1636</b>
---------------------------	------------------------	-----------------------------	---

ILS or LOC RWY 34

GREATER BINGHAMTON/EDWIN A LINK FLD (BGM)

<b>V</b> <b>A</b>	MALSR 	MISSED APPROACH: Climb to 2200 then climbing left turn to 3900 direct CFB VOR/DME and hold, continue climb-in-hold to 3900.			
ATIS <b>128.15</b>	BINGHAMTON APP CON * <b>118.6 257.625</b>	BINGHAMTON TOWER * <b>119.3 (CTAF) 0 239.25</b>	GND CON <b>121.9</b>	CLNC DEL <b>125.05</b>	UNICOM <b>122.95</b>



ELEV 1636	<b>D</b>	TDZE 1601	2200	3900	CFB	* LOC only. * 2180 when using Ithaca altimeter setting.	SMITE INT	Remain within 10 NM
VGSI and ILS glidepath not coincident (VGSI Angle 3.00/TCH 64).								
CATEGORY								
S-ILS 34								
S-LOC 34								
CIRCLING								
XIKCY FIX MINIMUMS								
S-LOC 34								
CIRCLING								

BINGHAMTON, NEW YORK  
Amdt 5 10SEP20

GREATER BINGHAMTON/EDWIN A LINK FLD (BGM)

42°13'N-75°59'W

ILS or LOC RWY 34