

BINGHAMTON, NEW YORK

AL-20 (FAA)

24025

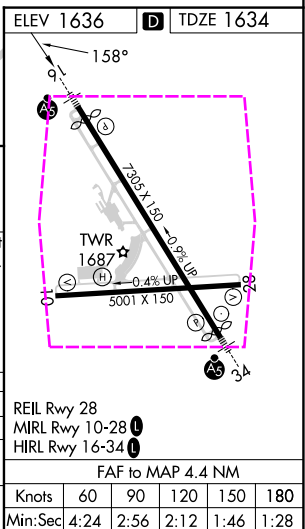
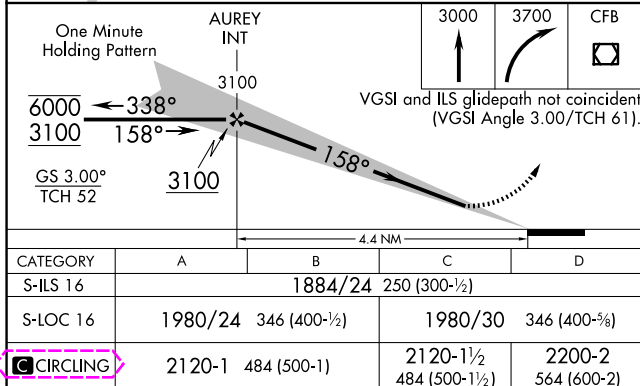
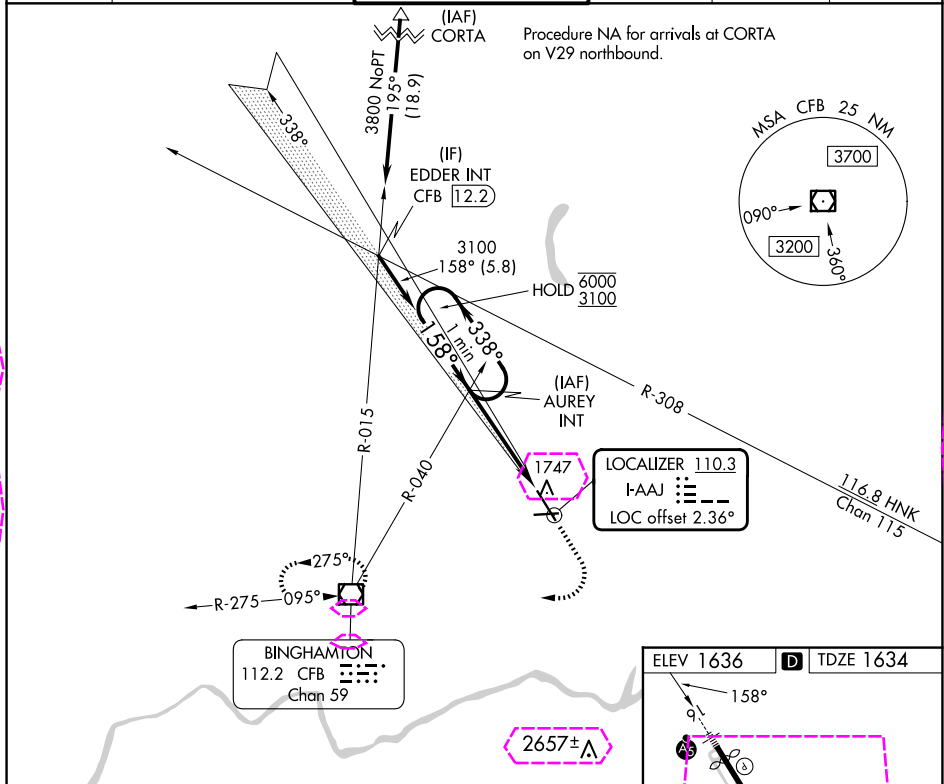
LOC I- AAJ 110.3	APP CRS 158°	Rwy Idg 6905 TDZE 1634 Apt Elev 1636
-----------------------------------	------------------------	---

ILS or LOC RWY 16

GREATER BINGHAMTON/EDWIN A LINK FLD (BGM)

7 A For inop ALS, increase S-LOC 16 Cats C and D visibility to RVR 5500.	MALSR 	MISSED APPROACH: Climb to 3000 then climbing right turn to 3700 direct CFB VOR/DME and hold.
---	------------------	---

ATIS 128.15	BINGHAMTON APP CON ★ 118.6 257.625	BINGHAMTON TOWER ★ 119.3 (CTAF) 0 239.25	GND CON 121.9	CLNC DEL 125.05	UNICOM 122.95
-----------------------	--	--	-------------------------	---------------------------	-------------------------



BINGHAMTON, NEW YORK
Amdt 8 19MAY22

GREATER BINGHAMTON/EDWIN A LINK FLD (BGM)
42°13'N - 75°59'W

ILS or LOC RWY 16


NE-2, 10 JUL 2025 to 07 AUG 2025

NE-2, 10 JUL 2025 to 07 AUG 2025

LOC I-AAJ	APP CRS	Rwy Ldg	6905
<u>110.3</u>	158°	TDZE	1634
		Apt Elev	1636

ILS or LOC RWY 16

GREATER BINGHAMTON/EDWIN A LINK FLD (BGM)

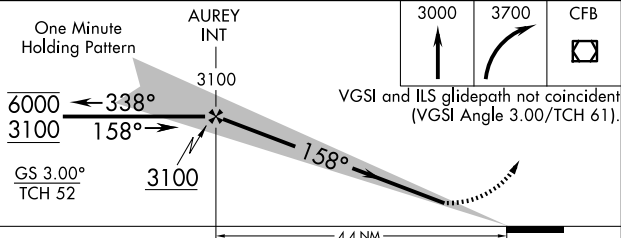
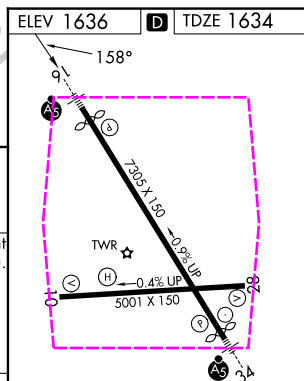
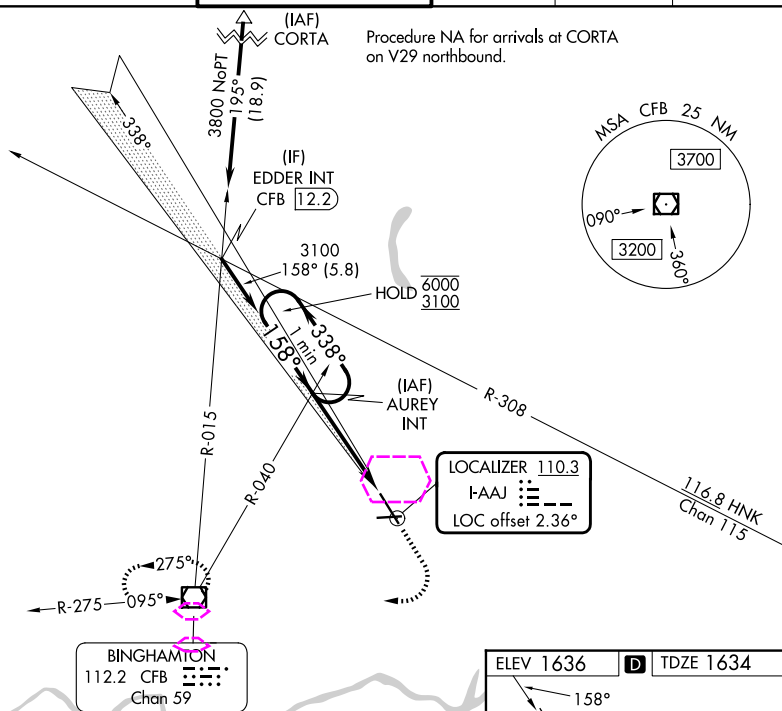
 <p>For inop ALS, increase S-LOC 16 Cats C and D visibility to RVR 5500.</p>		<p>MISSED APPROACH: Climb to 3000 then climbing right turn to 3700 direct CFB VOR/DME and hold.</p>
---	---	---

ATIS
128-15

BINGHAMTON APP CON ★
118.6 257.625

BINGHAMTON TOWER ★
119.3 (CTAF) 239.25

GND CON
121.9

CLNC DEL
125-05UNICOM
122.95

CATEGORY	A	B	C	D	REIL Rwy 28 MIRL Rwy 10-28 HIRL Rwy 16-34 FAF to MAP 4.4 NM
S-ILS 16	1884/24		250 (300-½)		
S-LOC 16	1980/24 346 (400-½)		1980/30 346 (400-¾)		
CIRCLING	2120-1	484 (500-1)	2120-1½ 484 (500-1½)	2200-2 564 (600-2)	
					Knots 60 90 120 150 180 Min:Sec 4:24 2:56 2:12 1:46 1:28

BINGHAMTON, NEW YORK
Amdt 8 19MAY22

GREATER BINGHAMTON/EDWIN A LINK FLD (BGM)
42°13'N - 75°59'W ILS or LOC PWY 14

ILS or LOC RWY 16

NE-2, 07 AUG 2025 to 04 SEP 2025

NE-2, 07 AUG 2025 to 04 SEP 2025