

AMARILLO, TEXAS

AL-19 (FAA)

23334

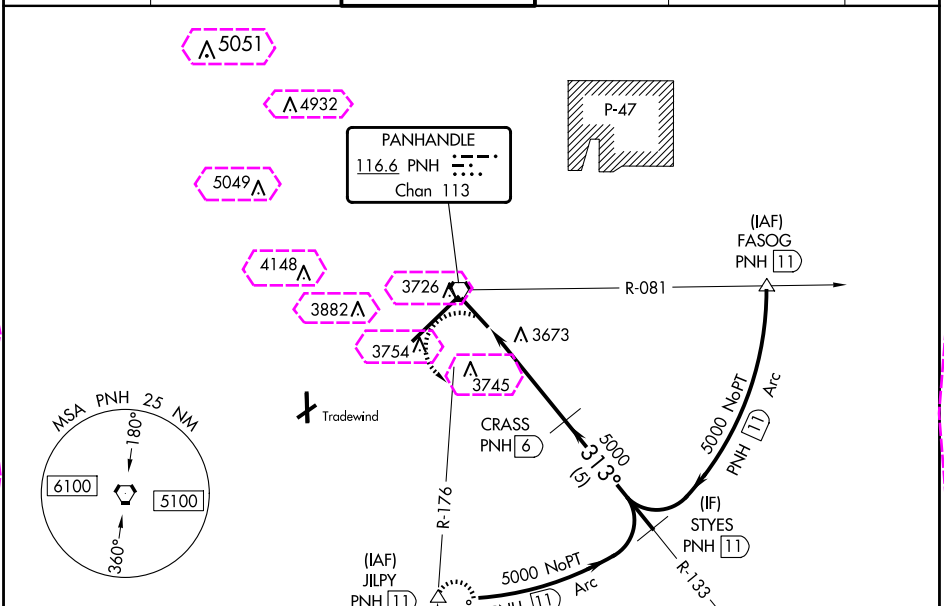
VORTAC PNH 116.6 Chan 113	APP CRS 313°	Rwy Idg TDZE Apt Elev 7901 3601 3607
---	------------------------	--

VOR RWY 31

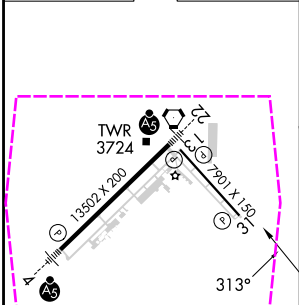
RICK HUSBAND AMARILLO INTL (AMA)

DME required.	MISSED APPROACH: Climbing left turn to 5300 on PNH VORTAC R-176 to JILPY/11 DME and hold.
 ASR	

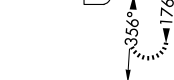
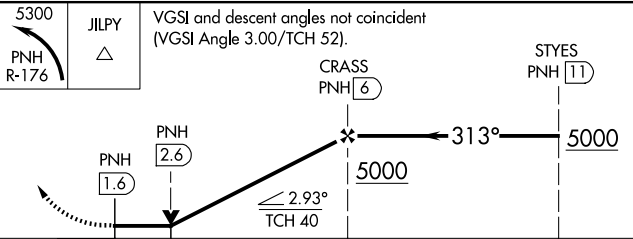
ATIS 118.85 350.3	AMARILLO APP CON* 119.5 307.0	AMARILLO TOWER* 118.3 (CTAF) 257.9	GND CON 121.9 348.6	CLNC DEL 121.65 239.275	UNICOM 122.95
-----------------------------	---	--	-------------------------------	-----------------------------------	-------------------------



ELEV 3607	D	TDZE 3601
-----------	---	-----------



REIL Rwy 13	HIRL Rws 4-22 and 13-31
FAF to MAP 4.4 NM	
Knots	60 90 120 150 180
Min:Sec	4:24 2:56 2:12 1:46 1:28

	JILPY △	VGSI and descent angles not coincident (VGSI Angle 3.00/TCH 52).	CRASS PNH 6	STYES PNH 11	
	PNH 2.6	≤ 2.93° TCH 40	5000	5000	
1 NM	3.4 NM	5 NM			
CATEGORY	A	B	C	D	E
S-31	3960-1	359 (400-1)	3960-1¼	359 (400-1¼)	
CIRCLING	4080-1	473 (500-1)	4240-1¾ 633 (700-1¾)	4280-2¼ 673 (700-2¼)	4460-3 853 (900-3)

AMARILLO, TEXAS
Orig-B 10OCT19

RICK HUSBAND AMARILLO INTL (AMA)

35°13'N-101°42'W

VOR RWY 31

AMARILLO, TEXAS

AL-19 (FAA)

25219

VORTAC PNH <u>116.6</u> Chan 113	APP CRS 313°	Rwy Ldg 7901 TDZE 3601 Apt Elev 3607
---	------------------------	---

VOR RWY 31

RICK HUSBAND AMARILLO INTL (AMA)

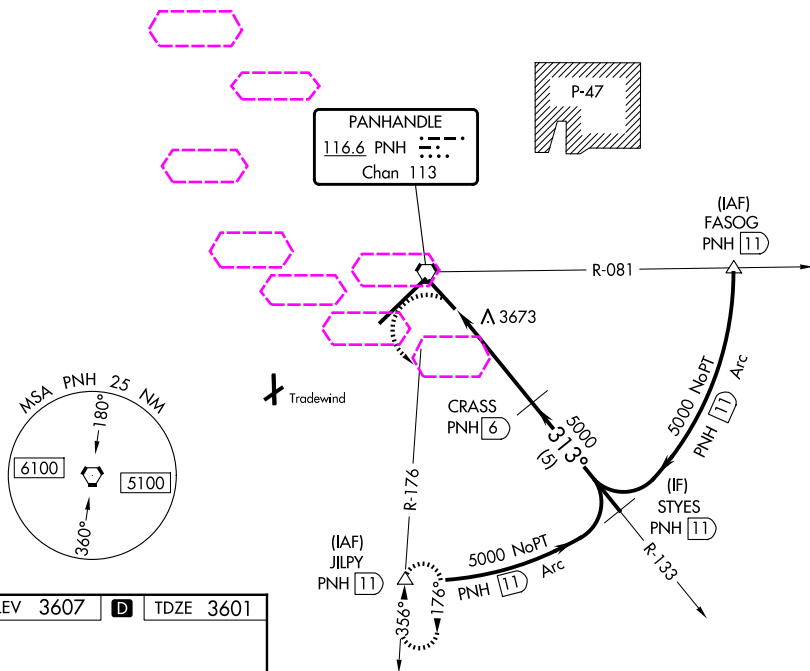
DME required.



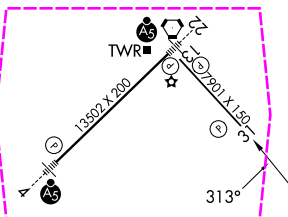
MISSED APPROACH: Climbing left turn to 5300 on PNH VORTAC R-176 to JLPY/11 DME and hold.

ASR

ATIS 118.85 350.3	AMARILLO APP CON★ 119.5 307.0	AMARILLO TOWER★ 118.3(CTAF) 0 257.9	GND CON 121.9 348.6	CLNC DEL 121.65 239.275	UNICOM 122.95
----------------------	----------------------------------	--	------------------------	----------------------------	------------------



ELEV 3607	D	TDZE 360
-----------	----------	----------

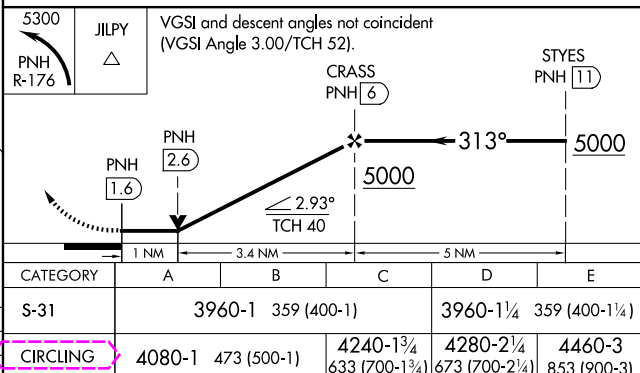


REIL Rwy 13 L

HIRL Rwys 4-22 and 13-31 **L**

FAF to MAP 4.4 NM

Knots	60	90	120	150	180
Min:Sec	4:24	2:56	2:12	1:46	1:28



AMARILLO, TEXAS

Orig-B 10OCT19

RICK HUSBAND AMARILLO INTL (AMA)

35°13'N-101°42'W

VOR RWY 31

SC-2, 07 AUG 2025 to 04 SEP 2025

SC-2, 07 AUG 2025 to 04 SEP 2025