

AMARILLO, TEXAS

AL-19 (FAA)

23334

VORTAC PNH 116.6 Chan 113	APP CRS 235°	Rwy Idg 13502 TDZE 3606 Apt Elev 3607
---	------------------------	--

VOR RWY 22

RICK HUSBAND AMARILLO INTL (AMA)

DME required.

T
A
ASR

For inop ALS, increase Cat C visibility to 1 SM.



MISSED APPROACH: Climbing left turn to 5300 on PNH R-176 to JILPY/11 DME and hold.

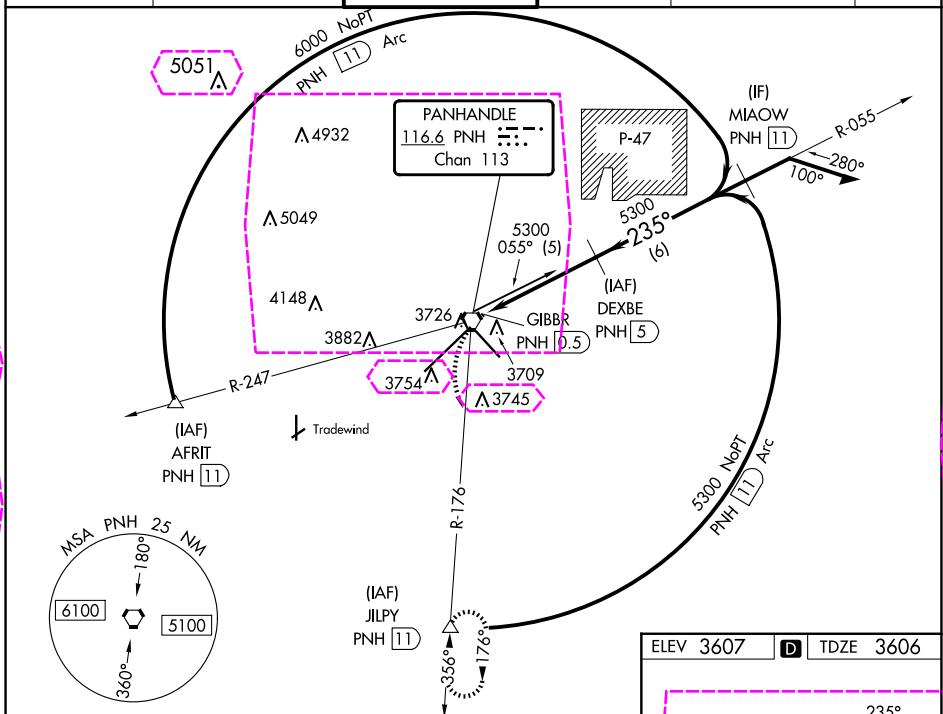
ATIS
118.85 350.3

AMARILLO APP CON★
119.5 307.0

AMARILLO TOWER ★
118.3(CTAF) 257.9

GND CON
121.9 348.6

CLNC DEL
121.65 239.275

UNICOM
122.95

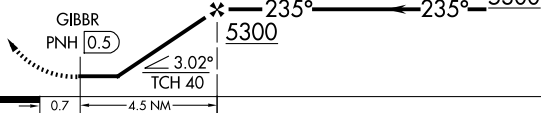
5300
PNH
R-176


JILPY
△

VGSI and descent angles not coincident (VGSI angle 3.00°/TCH 77).

DEXBE
PNH 5

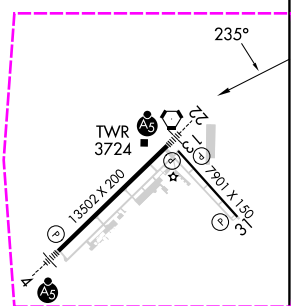
Remain
within 15 NM



CATEGORY	A	B	C	D	E
S-22	3960- $\frac{1}{2}$	354 (400- $\frac{1}{2}$)	3960- $\frac{3}{4}$ 354 (400- $\frac{3}{4}$)	3960-1	354 (400-1)
 CIRCLING	4080-1	473 (500-1)	4240- $\frac{1}{4}$ 633 (700- $\frac{1}{4}$)	4280- $\frac{2}{4}$ 673 (700- $\frac{2}{4}$)	4460-3 853 (900-3)

ELEV 3607		TDZE 3606
-----------	---	-----------

Page 10 of 10



REIL Rwy 13 **L**
HIRL Rwy 4-22 and 13-31 **L**

AMARILLO, TEXAS
Amdt 1A 10OCT19

RICK HUSBAND AMARILLO INTL (AMA)

VOR RWY 22

35°13'N-101°42'W

AMARILLO, TEXAS

AL-19 (FAA)

25219

VORTAC PNH 116.6 Chan 113	APP CRS 235°	Rwy Ldg TDZE Apt Elev 13502 3606 3607
---	------------------------	---

VOR RWY 22

RICK HUSBAND AMARILLO INTL (AMA)

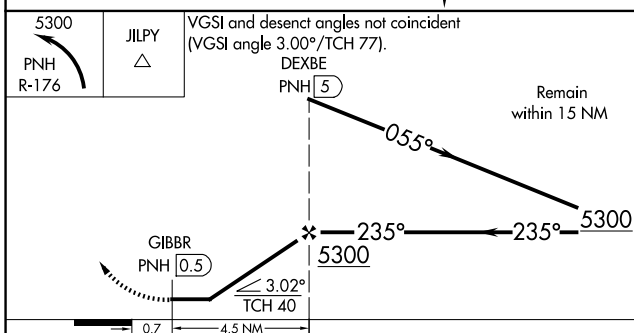
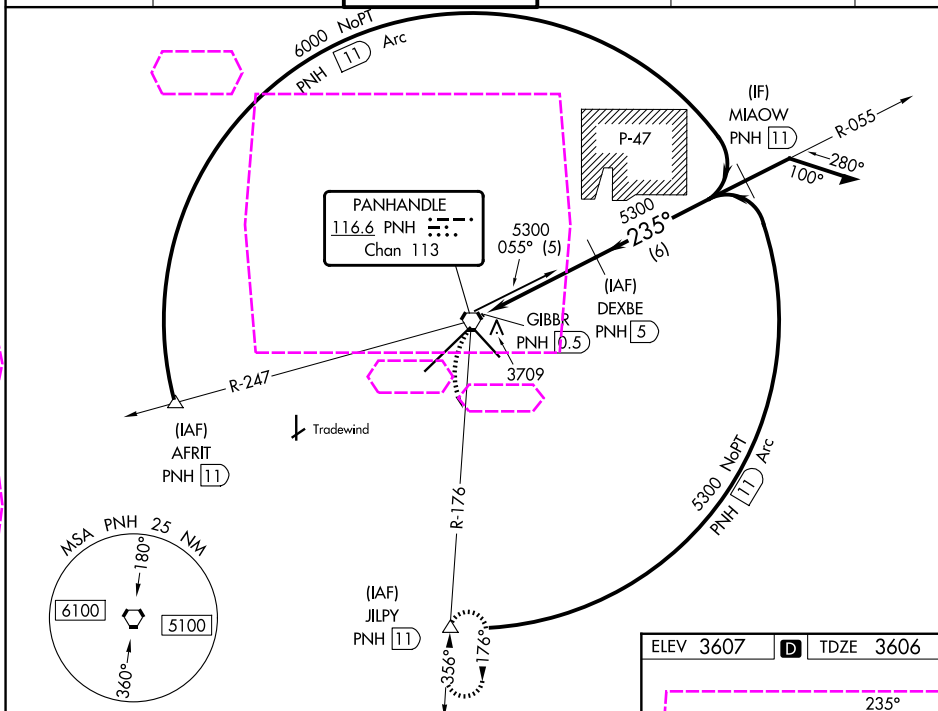
DME required.

For inop ALS, increase Cat C visibility to 1 SM.
ASR

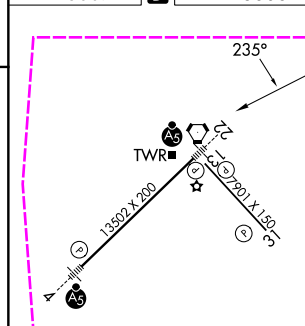


MISSED APPROACH: Climbing left turn to 5300 on PNH R-176 to JILPY/11 DME and hold.

ATIS 118.85 350.3	AMARILLO APP CON* 119.5 307.0	AMARILLO TOWER* 118.3 (CTAF) 257.9	GND CON 121.9 348.6	CLNC DEL 121.65 239.275	UNICOM 122.95
-----------------------------	---	--	-------------------------------	-----------------------------------	-------------------------



ELEV 3607	D	TDZE 3606
-----------	---	-----------



CATEGORY	A	B	C	D	E
S-22	3960-1/2 354 (400-1/2)	3960-3/4 354 (400-3/4)	3960-1 354 (400-1)	3960-1 354 (400-1)	3960-1 354 (400-1)
CIRCLING	4080-1 473 (500-1)	4240-1 3/4 633 (700-1 3/4)	4280-2 1/4 673 (700-2 1/4)	4460-3 853 (900-3)	4460-3 853 (900-3)

REIL Rwy 13 1
HIRL Rwy 4-22 and 13-31 1

AMARILLO, TEXAS
Amdt 1A 10OCT19

RICK HUSBAND AMARILLO INTL (AMA)

35°13'N-101°42'W

VOR RWY 22

SC-2, 07 AUG 2025 to 04 SEP 2025

SC-2, 07 AUG 2025 to 04 SEP 2025