

VORTAC PNH <u>116.6</u> Chan 113	APP CRS 115°	Rwy Idg 7901 TDZE 3603 Apt Elev 3607
---	------------------------	---

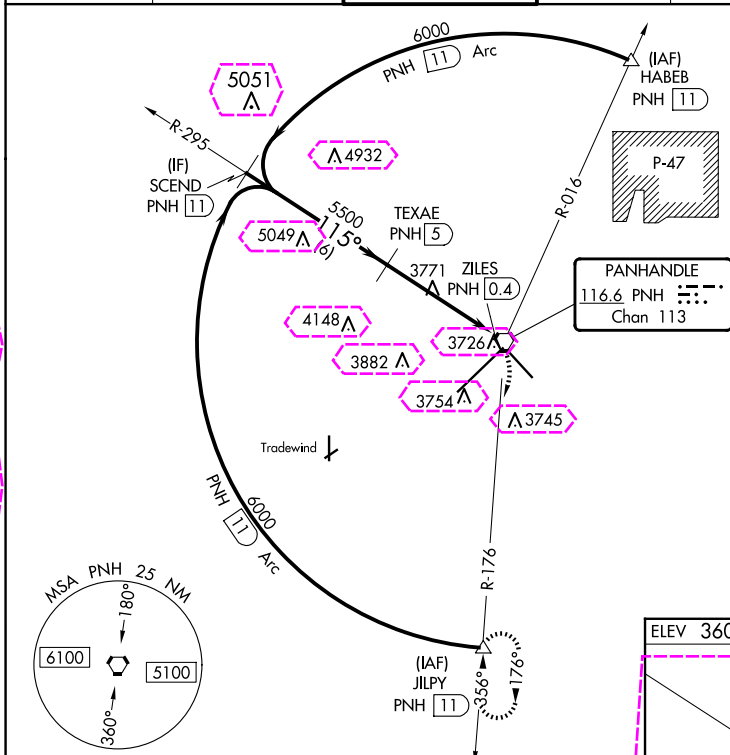
VOR RWY 13
RICK HUSBAND AMARILLO INTL (AMA)

DME required.


 TASR

MISSED APPROACH: Climbing right turn to 5300 on PNH VORTAC R-176 to JLPY/11 DME and hold.

ATIS	AMARILLO APP CON★	AMARILLO TOWER★	GND CON	CLNC DEL	UNICOM
118.85 350.3	119.5 307.0	118.3(CTAF)0 257.9	121.9 348.6	121.65 239.275	122.95



ELEV 3607	D	TDZE 3603
-----------	----------	-----------

VGSI and descent angles not coincident (VGSI Angle 3.00/TCH 52).

5300

JILPY

 Δ SCEND
PNH 11

TEXAS
PNH 5

PNH R-176

ZILES
PNH 0.4

PNH	PNH
09	VORT

0.7

VOR

6000

5500

3.30° 

TCH 55

0.5	0.4	0
-----	-----	---

0.3	0.4	0
D		

4280-2

CATEGORY

A

B

C

D

E

REIL Rwy 13 **L**

HIRL Rwy 4-22 and 13-31 L

AMARILLO, TEXAS
Orig-B 10OCT19

RICK HUSBAND AMARILLO INTL (AMA)

VOR RWY 13

35°13'N-101°42'W

SC-2, 10 JUL 2025 to 07 AUG 2025

SC-2, 10 JUL 2025 to 07 AUG 2025

AMARILLO, TEXAS

AL-19 (FAA)

25219

VORTAC PNH 116.6 Chan 113	APP CRS 115°	Rwy Ldg TDZE Apt Elev 7901 3603 3607
---	------------------------	--

VOR RWY 13

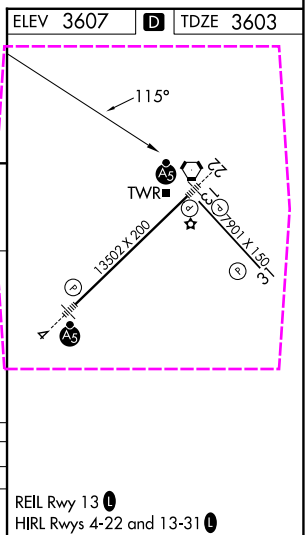
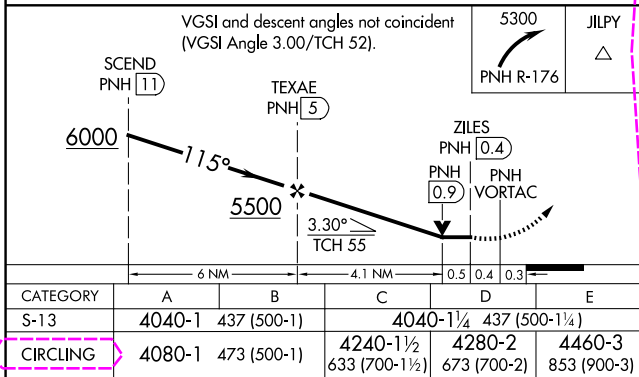
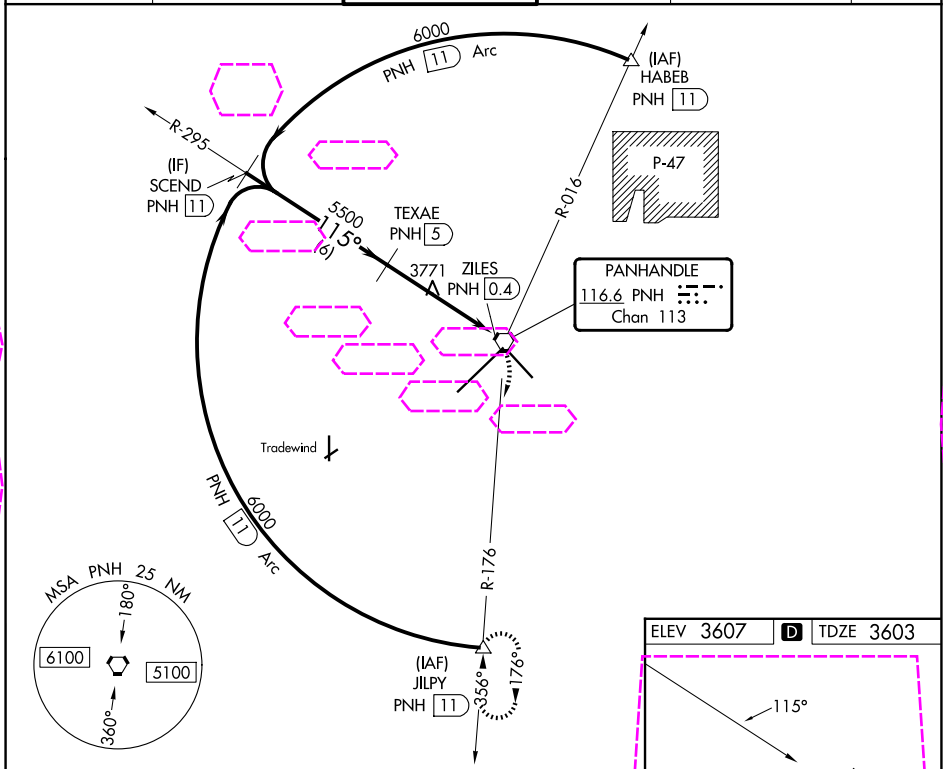
RICK HUSBAND AMARILLO INTL (AMA)

DME required.



MISSED APPROACH: Climbing right turn to 5300 on PNH VORTAC R-176 to JILPY/11 DME and hold.

ATIS 118.85 350.3	AMARILLO APP CON* 119.5 307.0	AMARILLO TOWER* 118.3 (CTAF) 257.9	GND CON 121.9 348.6	CINC DEL 121.65 239.275	UNICOM 122.95
-----------------------------	---	--	-------------------------------	-----------------------------------	-------------------------



AMARILLO, TEXAS
Orig-B 100CT19

35°13'N-101°42'W

RICK HUSBAND AMARILLO INTL (AMA)
VOR RWY 13

SC-2, 07 AUG 2025 to 04 SEP 2025

SC-2, 07 AUG 2025 to 04 SEP 2025