

AMARILLO, TEXAS

AL-19 (FAA)

23334

WAAS CH <b>82718</b> <b>W04A</b>	APP CRS <b>038°</b>	Rwy Idg TDZE Apt Elev <b>3502</b> <b>3607</b> <b>3607</b>
--	------------------------	--

# RNAV (GPS) Y RWY 4

RICK HUSBAND AMARILLO INTL (AMA)

RNP APCH.

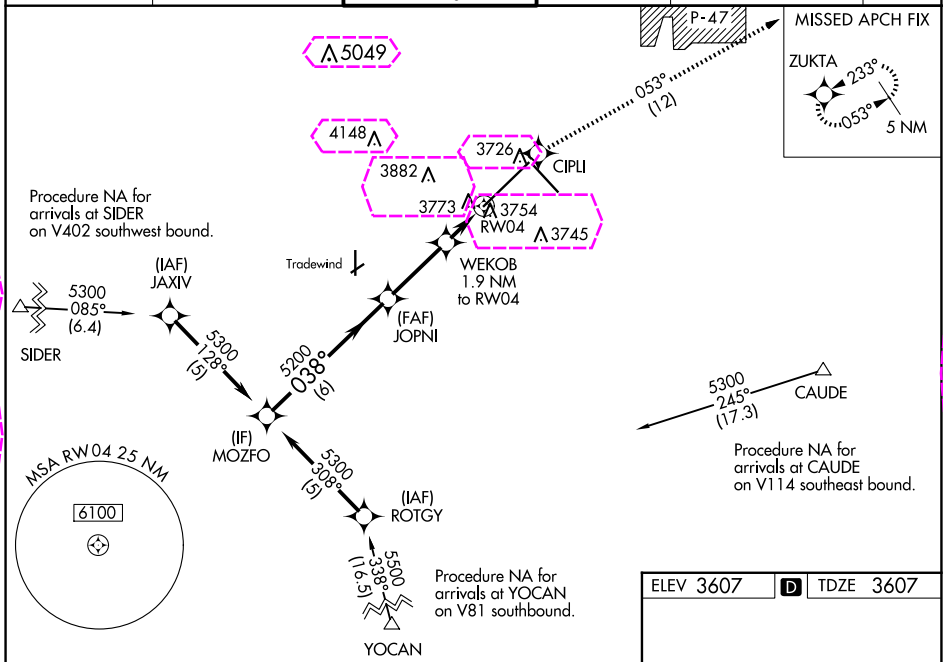
**ASR** For uncompensated Baro-VNAV systems, LNAV/VNAV NA below -22°C or above 41°C. For inop ALS, increase LPV Cat E visibility to RVR 4000, and LNAV/VNAV and LNAV Cat E to 1¼ SM.  
\*\* RVR 1800 authorized with use of FD or AP or HUD to DA.

MALSR

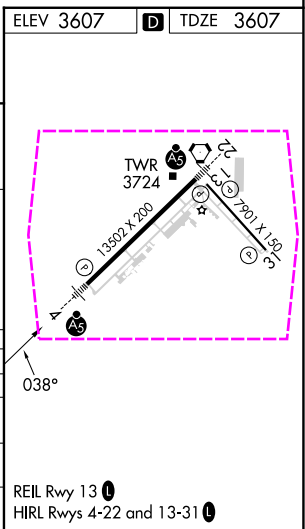


MISSED APPROACH: Climb to 5400 direct CIPLI and on track 053° to ZUKTA and hold.

ATIS <b>118.85 350.3</b>	AMARILLO APP CON* <b>119.5 307.0</b>	AMARILLO TOWER* <b>118.3 (CTAF) 257.9</b>	GND CON <b>121.9 348.6</b>	CLNC DEL <b>121.65 239.275</b>	UNICOM <b>122.95</b>
-----------------------------	---	--	-------------------------------	-----------------------------------	-------------------------



VGSI and RNAV glidepath not coincident (VGSI Angle 3.00/TCH 61). MOZFO					
5300	5200	5400	CIPLI	5400	ZUKTA
GP 3.00° TCH 44	038°	038°	tr 053°		
*LNAV only.					
6 NM 2.9 NM 0.8 NM 1.1 NM					
CATEGORY	A	B	C	D	E
LPV DA **	3807/24		200 (200-½)		
LNAV/VNAV DA	4028/50		421 (500-1)		
LNAV MDA	4040/24	433 (500-½)	4040/40 433 (500-¾)	4040/50	433 (500-1)
CIRCLING	4080-1	473 (500-1)	4240-1¼ 633 (700-1¼)	4280-2¼ 673 (700-2¼)	4460-3 853 (900-3)



AMARILLO, TEXAS  
Amdt 1B 10SEP20

35°13'N-101°42'W

RICK HUSBAND AMARILLO INTL (AMA)  
RNAV (GPS) Y RWY 4

SC-2, 10 JUL 2025 to 07 AUG 2025

SC-2, 10 JUL 2025 to 07 AUG 2025

AMARILLO, TEXAS

AL-19 (FAA)

25219

WAAS CH <b>82718</b> <b>W04A</b>	APP CRS <b>038°</b>	Rwy Ldg TDZE Apt Elev <b>13502</b> <b>3607</b> <b>3607</b>
--	------------------------	---

# RNAV (GPS) Y RWY 4

RICK HUSBAND AMARILLO INTL (AMA)

RNP APCH.

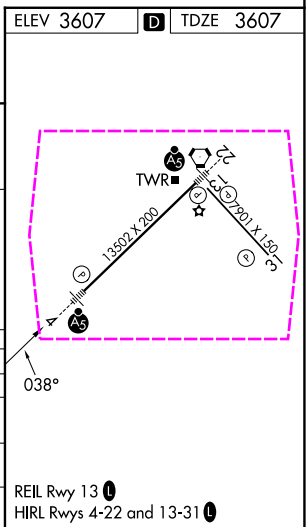
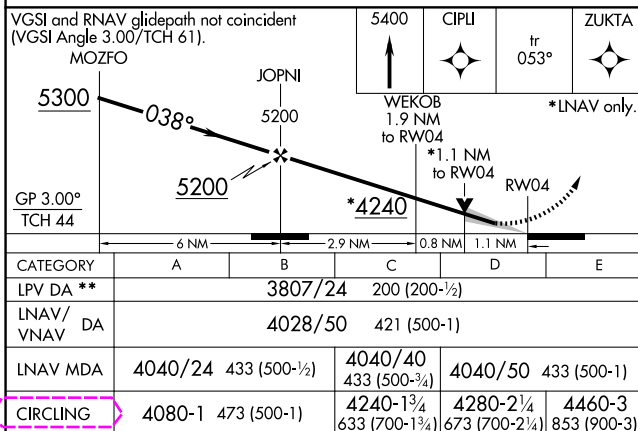
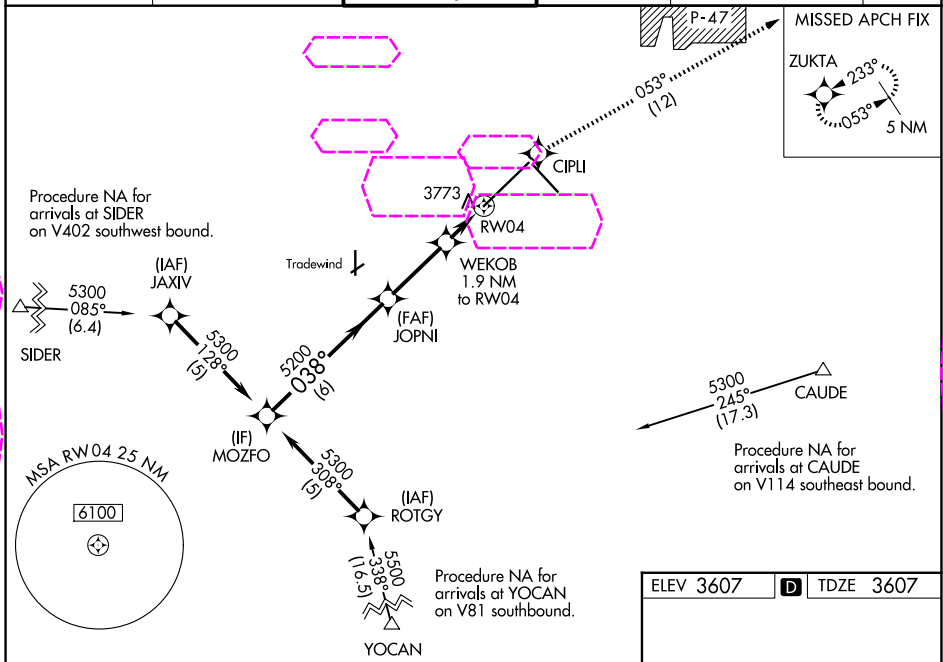
**ASR**  
For uncompensated Baro-VNAV systems, LNAV/VNAV NA below -22°C or above 41°C. For inop ALS, increase LPV Cat E visibility to RVR 4000, and LNAV/VNAV and LNAV Cat E to 1¼ SM.  
\*\* RVR 1800 authorized with use of FD or AP or HUD to DA.

MALSR



MISSED APPROACH: Climb to 5400 direct CIPLI and on track 053° to ZUKTA and hold.

ATIS <b>118.85 350.3</b>	AMARILLO APP CON* <b>119.5 307.0</b>	AMARILLO TOWER* <b>118.3 (CTAF) 257.9</b>	GND CON <b>121.9 348.6</b>	CLNC DEL <b>121.65 239.275</b>	UNICOM <b>122.95</b>
-----------------------------	---	--	-------------------------------	-----------------------------------	-------------------------



AMARILLO, TEXAS  
Amdt 1B 10SEP20

35°13'N-101°42'W

RICK HUSBAND AMARILLO INTL (AMA)  
RNAV (GPS) Y RWY 4

SC-2, 07 AUG 2025 to 04 SEP 2025

SC-2, 07 AUG 2025 to 04 SEP 2025