

AMARILLO, TEXAS

AL-19 (FAA)

23334

WAAS CH 82319 W31A	APP CRS 310°	Rwy Idg 7901 TDZE 3601 Apt Elev 3607
--	------------------------	---

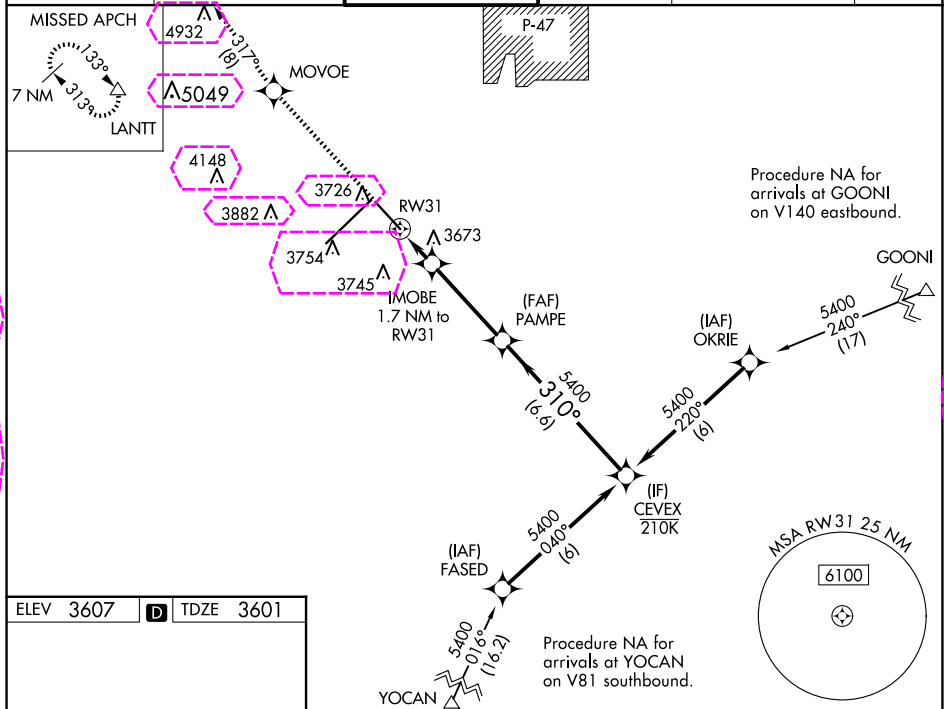
RNAV (GPS) Y RWY 31

RICK HUSBAND AMARILLO INTL (AMA)

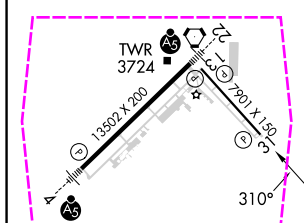
⚠ DME/DME RNP-0.3 NA. For uncompensated Baro-VNAV systems, LNAV/VNAV NA below -14°C (7°F) or above 46°C (116°F). When local altimeter setting not received, use Borger altimeter setting: increase DA to 4004 and all visibilities $\frac{5}{8}$ mile; increase all MDA 160 feet and visibility Cat C and D $\frac{1}{2}$ mile. Baro-VNAV and VDP NA when using Borger altimeter setting.

MISSED APPROACH: Climb to 6100 direct MOVEO and on track 317° to LANIT and hold.

ATIS 118.85 350.3	AMARILLO APP CON* 119.5 307.0	AMARILLO TOWER* 118.3 (CTAF) 257.9	GND CON 121.9 348.6	CLNC DEL 121.65 239.275	UNICOM 122.95
-----------------------------	---	--	-------------------------------	-----------------------------------	-------------------------



ELEV 3607	D	TDZE 3601
------------------	----------	------------------



6100	MOVEO	tr 317°	LANIT
*LNAV only.			
IMOBE 1.7 NM to RW31			
RW31 0.9 NM to RW31			
PAMPE 5400			
CEVEX 5400			
GP 3.04° TCH 52			
CATEGORY	B	C	D
LPV DA	3851-3/4	250 (300-3/4)	
LNAV/VNAV DA	3851-3/4	250 (300-3/4)	
LNAV MDA	3940-1	339 (400-1)	
CIRCLING	4080-1 473 (500-1)	4240-1 3/4 633 (700-1 3/4)	4280-2 1/4 673 (700-2 1/4)

AMARILLO, TEXAS
Amdt 2 21JUL16

35°13'N-101°42'W

RICK HUSBAND AMARILLO INTL (AMA)

RNAV (GPS) Y RWY 31

AMARILLO, TEXAS

AL-19 (FAA)

25219

WAAS CH 82319 W31A	APP CRS 310°	Rwy Ldg 7901 TDZE 3601 Apt Elev 3607
--	------------------------	---

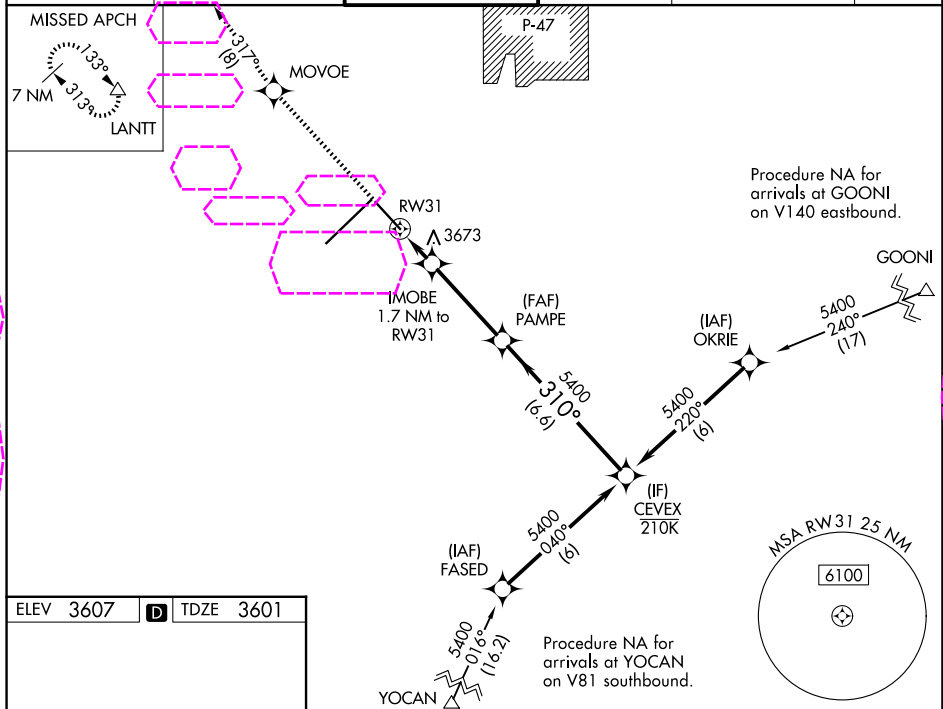
RNAV (GPS) Y RWY 31

RICK HUSBAND AMARILLO INTL (AMA)

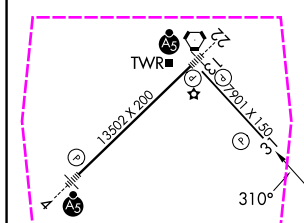
ASR **DME/DME RNP-0.3 NA.** For uncompensated Baro-VNAV systems, LNAV/VNAV NA below -14°C (7°F) or above 46°C (116°F). When local altimeter setting not received, use Borger altimeter setting: increase DA to 4004 and all visibilities $\frac{5}{8}$ mile; increase all MDA 160 feet and visibility Cat C and D $\frac{1}{2}$ mile. Baro-VNAV and VDP NA when using Borger altimeter setting.

MISSED APPROACH: Climb to 6100 direct MOVEO and on track 317° to LANIT and hold.

ATIS 118.85 350.3	AMARILLO APP CON* 119.5 307.0	AMARILLO TOWER* 118.3 (CTAF) 257.9	GND CON 121.9 348.6	CLNC DEL 121.65 239.275	UNICOM 122.95
-----------------------------	---	--	-------------------------------	-----------------------------------	-------------------------



ELEV 3607	D	TDZE 3601
------------------	----------	------------------



6100	MOVEO	tr 317°	LANIT
*LNAV only.			
IMOBE 1.7 NM to RW31			
*0.9 NM to RW31			
*4180			
PAMPE 5400			
CEVEX 5400			
GP 3.04° TCH 52			
CATEGORY	B	C	D
LPV DA	3851-3/4	250 (300-3/4)	
LNAV/VNAV DA	3851-3/4	250 (300-3/4)	
LNAV MDA	3940-1	339 (400-1)	
CIRCLING	4080-1 473 (500-1)	4240-1 3/4 633 (700-1 3/4)	4280-2 1/4 673 (700-2 1/4)

AMARILLO, TEXAS
Amdt 2 21JUL16

35°13'N-101°42'W

RICK HUSBAND AMARILLO INTL (AMA)

RNAV (GPS) Y RWY 31

SC-2, 07 AUG 2025 to 04 SEP 2025

SC-2, 07 AUG 2025 to 04 SEP 2025