

WAAS CH <b>57919</b> <b>W13A</b>	APP CRS <b>129°</b>	Rwy Idg <b>7901</b> TDZE <b>3603</b> Apt Elev <b>3607</b>
--	------------------------	---

## RNAV (GPS) Y RWY 13

## RICK HUSBAND AMARILLO INTL (AMA)

RNP APCH.

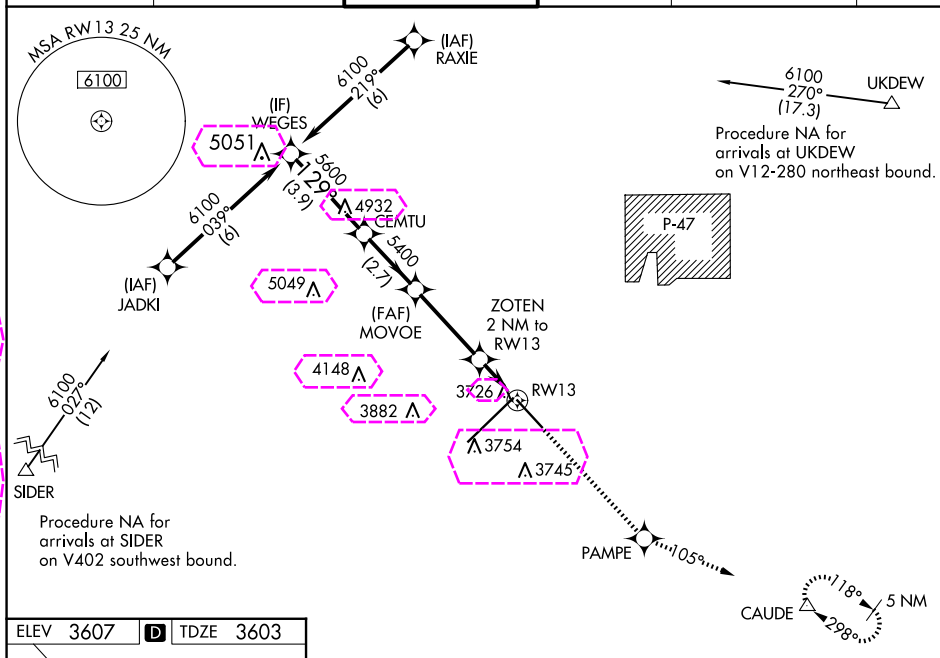


For uncompensated Baro-VNAV systems, LNAV/VNAV NA below -22°C or above 41°C.

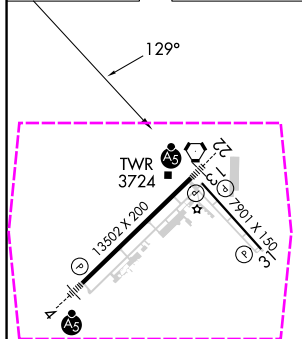
ASR

**MISSED APPROACH:** Climb to 5400 direct PAMPE and on track 105° to CAUDE and hold.

ATIS 118.85 350.3	AMARILLO APP CON★ 119.5 307.0	AMARILLO TOWER★ 118.3(CTAF) 0 257.9	GND CON 121.9 348.6	CLNC DEL 121.65 239,275	UNICOM 122.95
----------------------	----------------------------------	--	------------------------	----------------------------	------------------

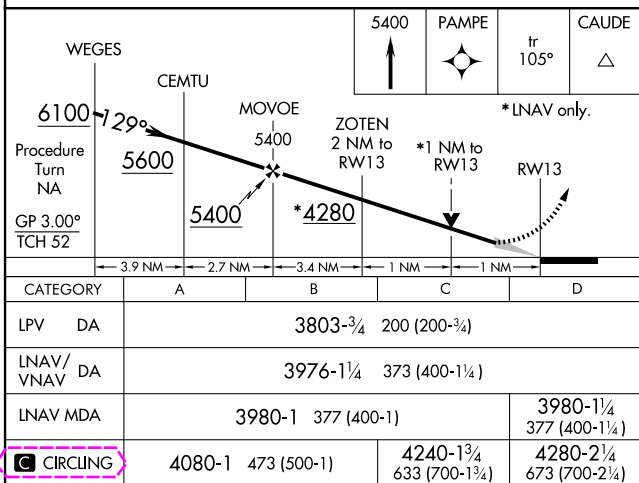


ELEV 3607	<b>D</b>	TDZE 3603
-----------	----------	-----------



REIL Rwy 13 L

HIRE Rlys 4-22 and 13-31 L



AMARILLO, TEXAS

Amdt 1A 10SEP20

35°13'N-101°42'W

RICK HUSBAND AMARILLO INTL (AMA)

RNAV (GPS) Y RWY 13

AMARILLO, TEXAS

AL-19 (FAA)

25219

WAAS CH <b>57919</b> <b>W13A</b>	APP CRS <b>129°</b>	Rwy Ldg TDZE <b>3603</b> Apt Elev <b>3607</b>
--	------------------------	---

# RNAV (GPS) Y RWY 13

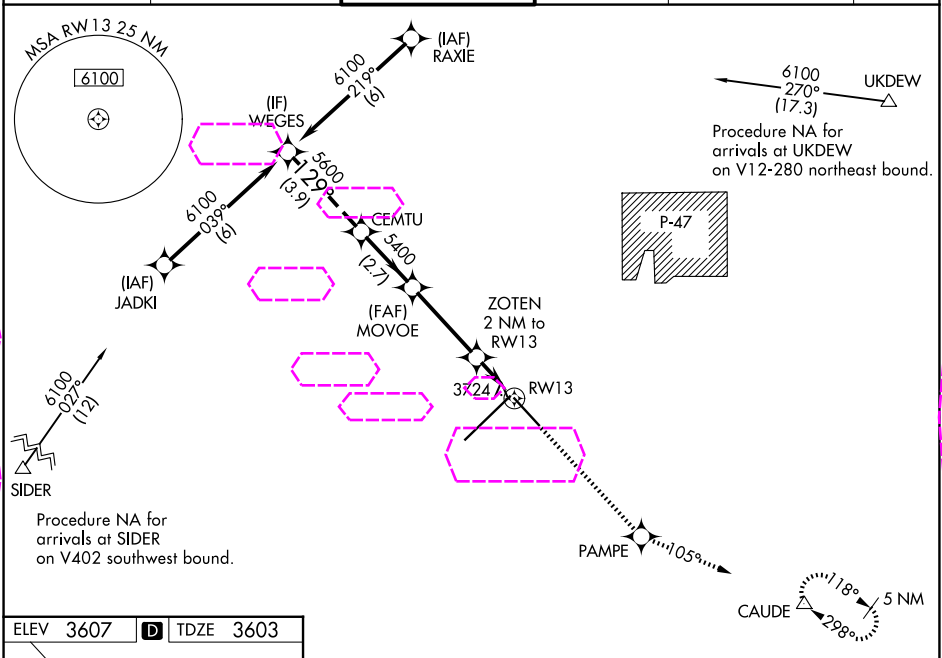
RICK HUSBAND AMARILLO INTL (AMA)

RNP APCH.

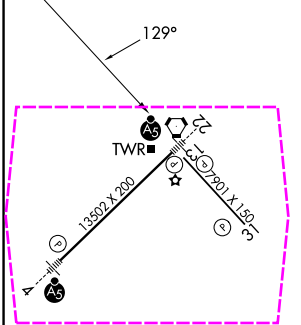
**⚠** For uncompensated Baro-VNAV systems, LNAV/VNAV NA below -22°C or above 41°C.  
ASR

MISSED APPROACH: Climb to 5400 direct PAMPE and on track 105° to CAUDE and hold.

ATIS <b>118.85 350.3</b>	AMARILLO APP CON* <b>119.5 307.0</b>	AMARILLO TOWER* <b>118.3(CTAF) 257.9</b>	GND CON <b>121.9 348.6</b>	CLNC DEL <b>121.65 239.275</b>	UNICOM <b>122.95</b>
-----------------------------	---	---	-------------------------------	-----------------------------------	-------------------------



ELEV 3607	<b>D</b>	TDZE 3603
-----------	----------	-----------



	WEGES	CEMTU	MOVVOE	ZOTEN 2 NM to RW13	PAMPE	tr 105°	CAUDE
	6100	5600	5400	*4280			
	Procedure Turn NA			*1 NM to RW13			
	GP 3.00°						
	TCH 52						
	3.9 NM	2.7 NM	3.4 NM	1 NM	1 NM		
CATEGORY	A	B	C	D			
LPV DA	3803-3/4 200 (200-3/4)						
LNAV/VNAV DA	3976-1 373 (400-1 1/4)						
LNAV MDA	3980-1 377 (400-1)						3980-1 377 (400-1 1/4)
CIRCLING	4080-1	473 (500-1)	4240-1 633 (700-1 3/4)	4280-2 673 (700-2 1/4)			

REIL Rwy 13  
HIRL Rwy 4-22 and 13-31

AMARILLO, TEXAS  
Amdt 1A 10SEP20

35°13'N-101°42'W

RICK HUSBAND AMARILLO INTL (AMA)  
RNAV (GPS) Y RWY 13

SC-2, 07 AUG 2025 to 04 SEP 2025

SC-2, 07 AUG 2025 to 04 SEP 2025