

AMARILLO, TEXAS

AL-19 (FAA)

23334

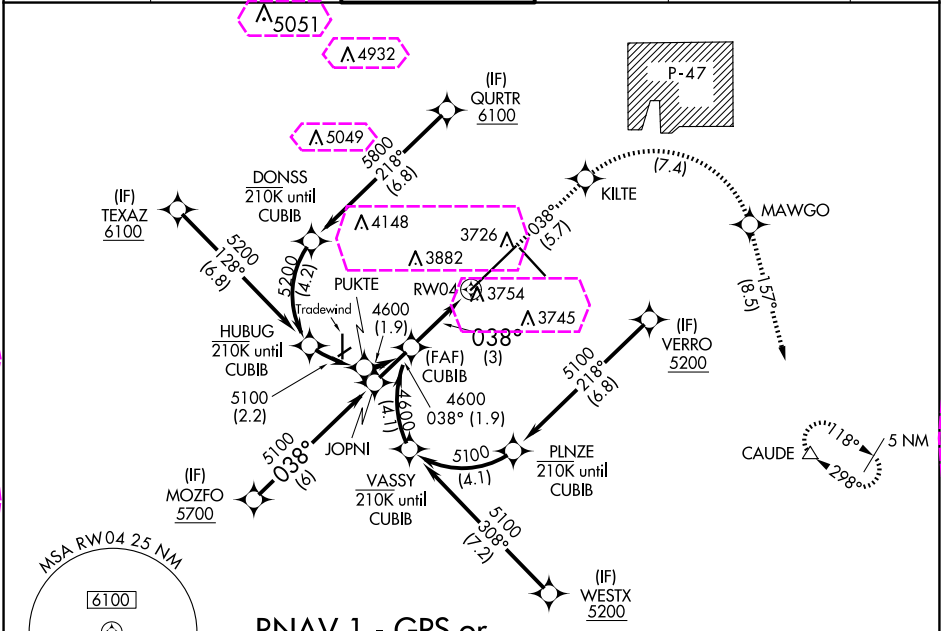
APP CRS	Rwy Idg	13502
038°	TDZE	3607
	Apt Elev	3607

# RNAV (RNP) Z RWY 4

RICK HUSBAND AMARILLO INTL (AMA)

ASR	For uncompensated Baro-VNAV systems, procedure NA below -14°C (7°F) or above 53°C (128°F). RF required. GPS required. For inop ALS, increase RNP 0.30 all Cats visibility to 1½ SM.	MALSR	MISSED APPROACH: (Do not exceed 185K until MAWGO) Climb to 5400 on track 038° to KILTE, right turn to MAWGO, then track 157° to CAUDE and hold.
-----	--	-------	---

ATIS	AMARILLO APP CON *	AMARILLO TOWER *	GND CON	CLNC DEL	UNICOM
118.85 350.3	119.5 307.0	118.3(CTAF) 257.9	121.9 348.6	121.65 239.275	122.95



VGSI and RNAV glidepath not coincident (VGSI Angle 3.00/TCH 61).		5400 ↑ tr 038°	KILTE	MAWGO	CAUDE
See planview for multiple IF locations.					
GP 3.00° TCH 44					
CATEGORY	A	B	C	D	
RNP 0.12 DA		3969/40	362 (400-¾)		
RNP 0.30 DA		4019/50	412 (500-1)		
AUTHORIZATION REQUIRED					
REIL Rwy 13		HIRL Rwy 4-22 and 13-31			

AMARILLO, TEXAS  
Amdt 1 12OCT17

35°13'N-101°42'W

RICK HUSBAND AMARILLO INTL (AMA)  
RNAV (RNP) Z RWY 4

AMARILLO, TEXAS

AL-19 (FAA)

25219

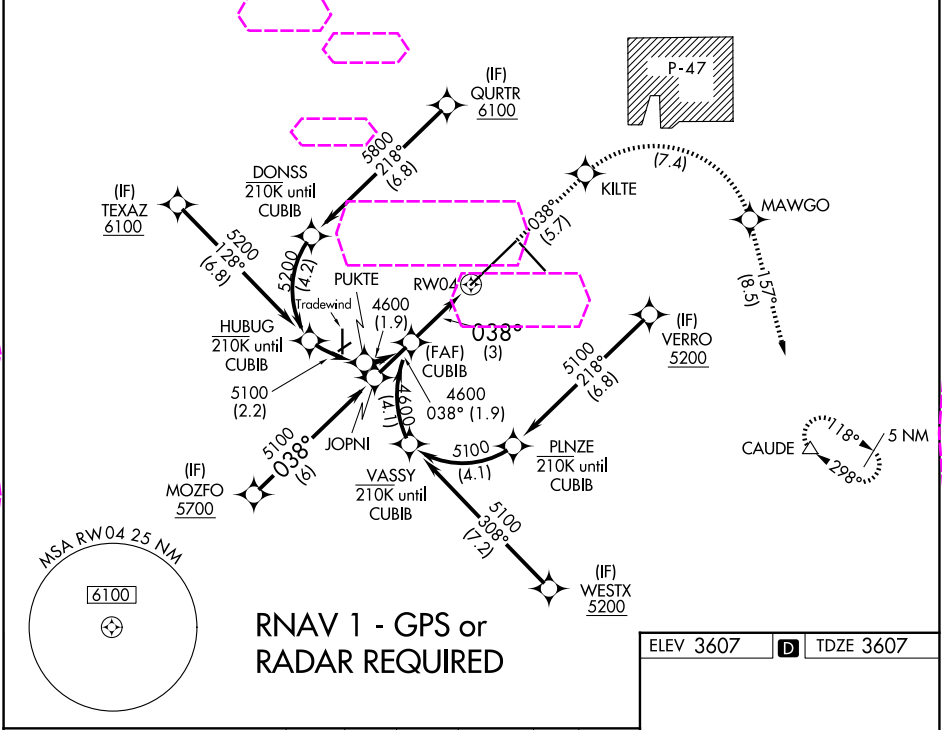
APP CRS	Rwy Ldg	13502
038°	TDZE	3607
	Apt Elev	3607

# RNAV (RNP) Z RWY 4

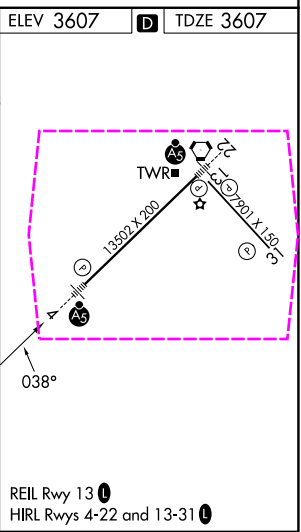
RICK HUSBAND AMARILLO INTL (AMA)

ASR	For uncompensated Baro-VNAV systems, procedure NA below -14°C (7°F) or above 53°C (128°F). RF required. GPS required. For inop ALS, increase RNP 0.30 all Cats visibility to 1½ SM.	MALSR	MISSED APPROACH: (Do not exceed 185K until MAWGO) Climb to 5400 on track 038° to KILTE, right turn to MAWGO, then track 157° to CAUDE and hold.
-----	--	-------	---

ATIS	AMARILLO APP CON *	AMARILLO TOWER *	GND CON	CLNC DEL	UNICOM
118.85 350.3	119.5 307.0	118.3(CTAF) 257.9	121.9 348.6	121.65 239.275	122.95



VGSI and RNAV glidepath not coincident (VGSI Angle 3.00/TCH 61).		5400 ↑ tr 038°	KILTE	MAWGO	CAUDE
See planview for multiple IF locations.					
GP 3.00° TCH 44		4600	038°	3 NM	
CATEGORY	A	B	C	D	
RNP 0.12 DA		3969/40	362 (400-¾)		
RNP 0.30 DA		4019/50	412 (500-1)		
AUTHORIZATION REQUIRED					



AMARILLO, TEXAS  
Amdt 1 12OCT17

35°13'N-101°42'W

RICK HUSBAND AMARILLO INTL (AMA)  
RNAV (RNP) Z RWY 4

SC-2, 07 AUG 2025 to 04 SEP 2025

SC-2, 07 AUG 2025 to 04 SEP 2025