

AMARILLO, TEXAS

AL-19 (FAA)

23334

APP CRS <b>309°</b>	Rwy Idg <b>7901</b>
	TDZE <b>3601</b>
	Apt Elev <b>3607</b>

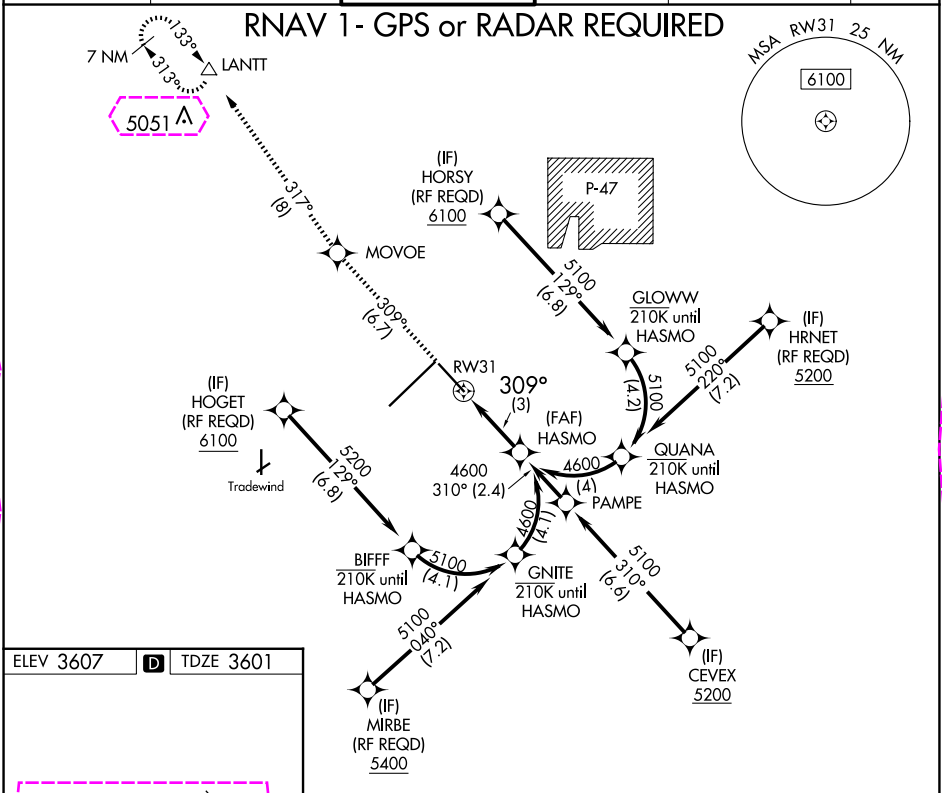
# RNAV (RNP) Z RWY 31

RICK HUSBAND AMARILLO INTL (AMA)

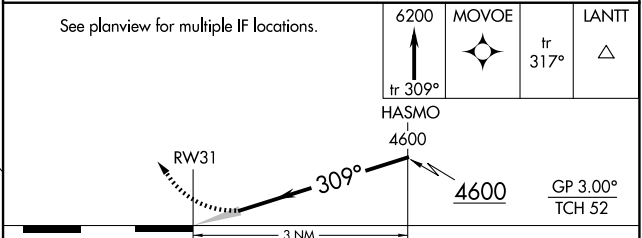
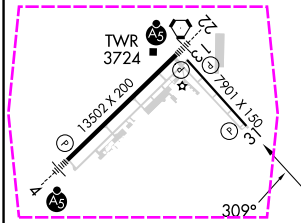
**For uncompensated Baro-VNAV systems, procedure NA below ASR -14°C (7°F) or above 51°C (124°F). GPS required.**

**MISSED APPROACH:** Climb to 6200 on track 309° to MOVOE and track 317° to LANIT and hold.

ATIS <b>118.85 350.3</b>	AMARILLO APP CON★ <b>119.5 307.0</b>	AMARILLO TOWER★ <b>118.3(CTAF) 257.9</b>	GND CON <b>121.9 348.6</b>	CLNC DEL <b>121.65 239.275</b>	UNICOM <b>122.95</b>
-----------------------------	---	---	-------------------------------	-----------------------------------	-------------------------



ELEV 3607	<b>D</b>	TDZE 3601
-----------	----------	-----------



CATEGORY	A	B	C	D
RNP 0.30 DA		3930-1½	329 (400-1½)	

REIL Rwy 13  
HIRL Rwy 4-22 and 13-31

**AUTHORIZATION REQUIRED**

AMARILLO, TEXAS  
Amdt 1 12OCT17

35°13'N-101°42'W

RICK HUSBAND AMARILLO INTL (AMA)  
**RNAV (RNP) Z RWY 31**

SC-2, 10 JUL 2025 to 07 AUG 2025

SC-2, 10 JUL 2025 to 07 AUG 2025

AMARILLO, TEXAS

AL-19 (FAA)

25219

APP CRS 309°	Rwy Ldg 7901
	TDZE 3601
	Apt Elev 3607

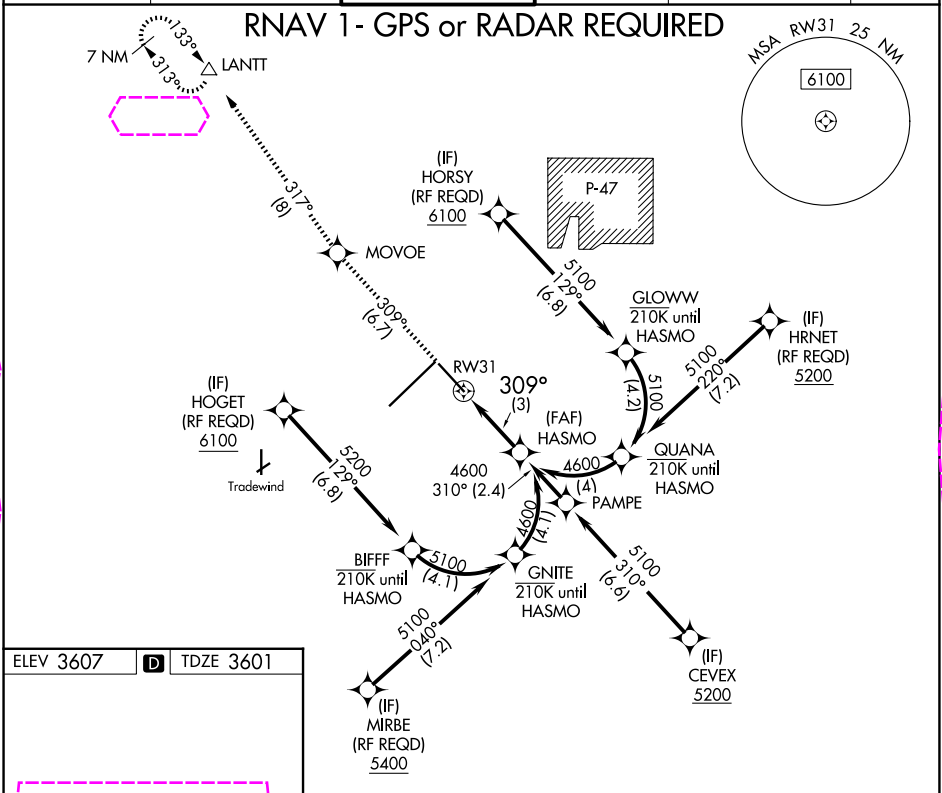
# RNAV (RNP) Z RWY 31

RICK HUSBAND AMARILLO INTL (AMA)

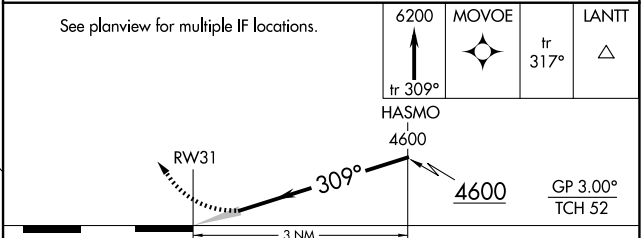
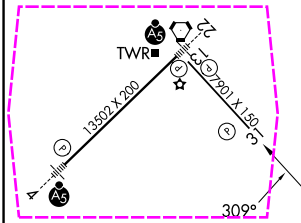
For uncompensated Baro-VNAV systems, procedure NA below ASR -14°C (7°F) or above 51°C (124°F). GPS required.

MISSED APPROACH: Climb to 6200 on track 309° to MOVOE and track 317° to LANIT and hold.

ATIS 118.85 350.3	AMARILLO APP CON★ 119.5 307.0	AMARILLO TOWER★ 118.3(CTAF) 257.9	GND CON 121.9 348.6	CLNC DEL 121.65 239.275	UNICOM 122.95
----------------------	----------------------------------	--------------------------------------	------------------------	----------------------------	------------------



ELEV 3607	D	TDZE 3601
-----------	---	-----------



CATEGORY	A	B	C	D
RNP 0.30 DA		3930-1½	329 (400-1½)	

AUTHORIZATION REQUIRED

AMARILLO, TEXAS  
Amdt 1 12OCT17

35°13'N-101°42'W

RICK HUSBAND AMARILLO INTL (AMA)  
RNAV (RNP) Z RWY 31

SC-2, 07 AUG 2025 to 04 SEP 2025

SC-2, 07 AUG 2025 to 04 SEP 2025