

AMARILLO, TEXAS

AL-19 (FAA)

23334

APP CRS	Rwy Idg	13502
218°	TDZE	3606
	Apt Elev	3607

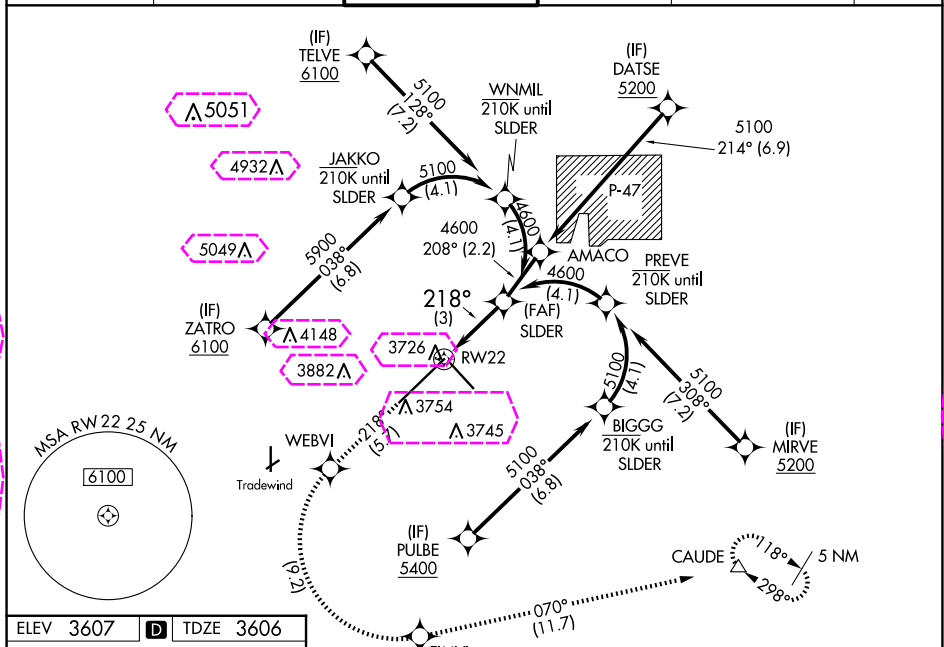
# RNAV (RNP) Z RWY 22

RICK HUSBAND AMARILLO INTL (AMA)

ASR For uncompensated Baro-VNAV systems, procedure NA below -14°C (7°F) or above 52°C (125°F). RF required. For inop ALS, increase RNP 0.14 all Cats visibility to ½ SM and increase RNP 0.30 all Cats visibility to 1½ SM.

MALSR MISSED APPROACH: (Do not exceed 185 K until FIMVI) Climb to 5400 on track 218° to WEBVI, left turn to FIMVI, then track 070° to CAUDE and hold.

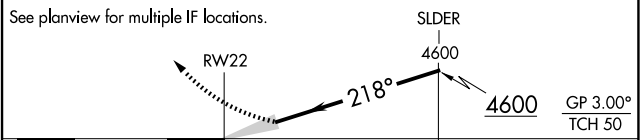
ATIS	AMARILLO APP CON★	AMARILLO TOWER★	GND CON	CLNC DEL	UNICOM
118.85 350.3	119.5 307.0	118.3(CTAF) 257.9	121.9 348.6	121.65 239.275	122.95



ELEV 3607	D	TDZE 3606
-----------	---	-----------

## RNAV 1 - GPS or RADAR REQUIRED

VGSI and RNAV glidepath not coincident (VGSI Angle 3.00/TCH 77).	5400	WEBVI	FIMVI	CAUDE
	tr 218°		tr 070°	△



CATEGORY	A	B	C	D
RNP 0.14 DA		3884-½	278 (300-½)	
RNP 0.30 DA		3958-¾	352 (400-¾)	

## AUTHORIZATION REQUIRED

AMARILLO, TEXAS  
Amdt 1 12OCT17

35°13'N-101°42'W

RICK HUSBAND AMARILLO INTL (AMA)  
RNAV (RNP) Z RWY 22

AMARILLO, TEXAS

AL-19 (FAA)

25219

APP CRS	Rwy Ldg	13502
218°	TDZE	3606
	Apt Elev	3607

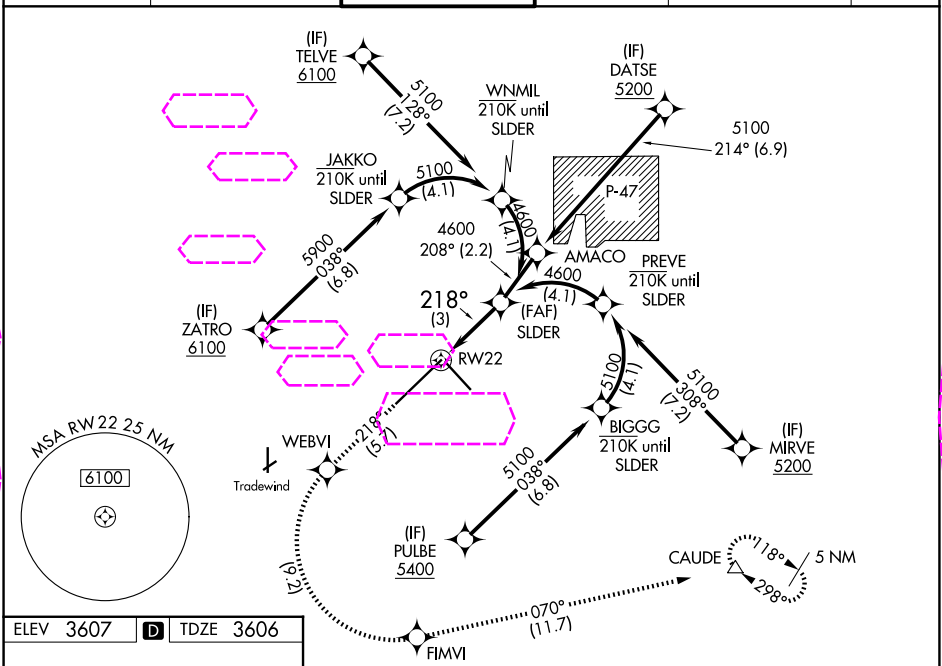
# RNAV (RNP) Z RWY 22

RICK HUSBAND AMARILLO INTL (AMA)

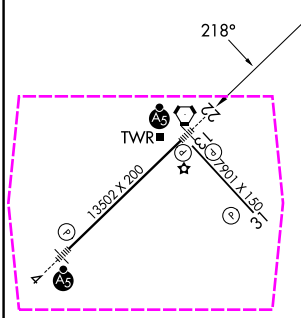
**ASR** For uncompensated Baro-VNAV systems, procedure NA below -14°C (7°F) or above 52°C (125°F). RF required. For inop ALS, increase RNP 0.14 all Cats visibility to ½ SM and increase RNP 0.30 all Cats visibility to 1½ SM.

**MALSR** MISSED APPROACH: (Do not exceed 185 K until FIMVI) Climb to 5400 on track 218° to WEBVI, left turn to FIMVI, then track 070° to CAUDE and hold.

ATIS	AMARILLO APP CON★	AMARILLO TOWER★	GND CON	CLNC DEL	UNICOM
118.85 350.3	119.5 307.0	118.3(CTAF) 257.9	121.9 348.6	121.65 239.275	122.95

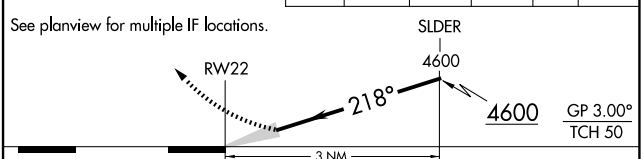


ELEV 3607	TDZE 3606
-----------	-----------



## RNAV 1 - GPS or RADAR REQUIRED

VGSI and RNAV glidepath not coincident (VGSI Angle 3.00/TCH 77).	5400 WEBVI	FIMVI	CAUDE
	tr 218°	tr 070°	△



CATEGORY	A	B	C	D
RNP 0.14 DA		3884-1/2	278 (300-1/2)	
RNP 0.30 DA		3958-3/4	352 (400-3/4)	

## AUTHORIZATION REQUIRED

AMARILLO, TEXAS  
Amdt 1 12OCT17

35°13'N-101°42'W

RICK HUSBAND AMARILLO INTL (AMA)  
RNAV (RNP) Z RWY 22

SC-2, 07 AUG 2025 to 04 SEP 2025

SC-2, 07 AUG 2025 to 04 SEP 2025