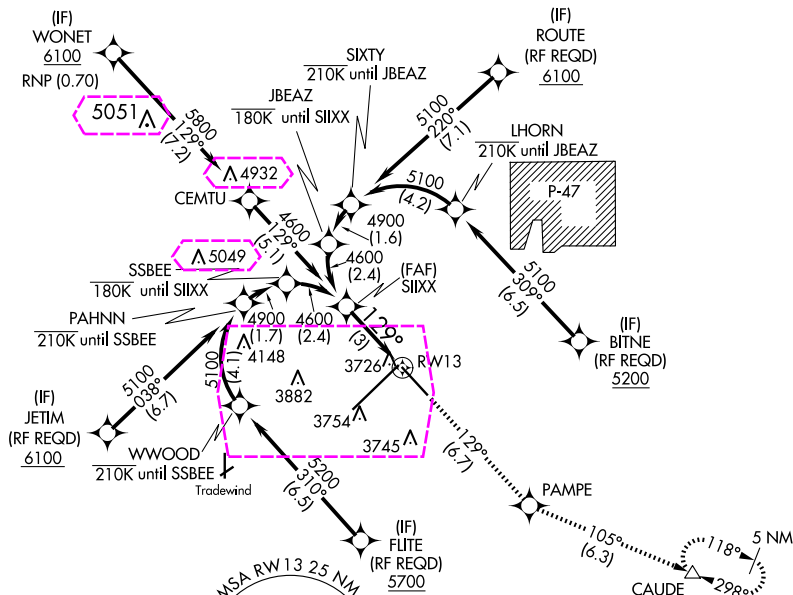


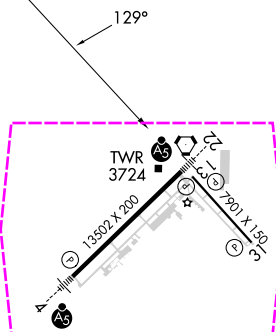
RNAV (RNP) Z RWY 13
RICK HUSBAND AMARILLO INTL (AMA)

MISSED APPROACH: Climb to 5400 on track 129° to PAMPE and track 105° to CAUDE and hold.

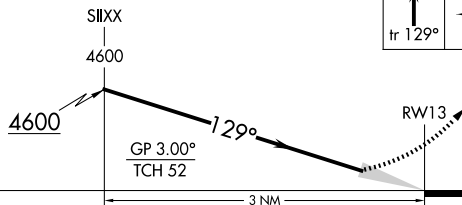
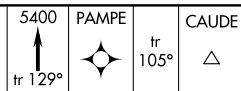
ATIS 118.85 350.3	AMARILLO APP CON★ 119.5 307.0	AMARILLO TOWER★ 118.3(CTAF) 0 257.9	GND CON 121.9 348.6	CLNC DEL 121.65 239.275	UNICOM 122.95
----------------------	----------------------------------	--	------------------------	----------------------------	------------------



ELEV 3607	D	TDZE 3603
-----------	----------	-----------

RNAV 1 - GPS or
RADAR REQUIRED

See planview for multiple IF locations.



CATEGORY	A	B	C	D
RNP 0.30 DA	3976-1¼ 373 (400-1¼)			

AUTHORIZATION REQUIRED

REIL Rwy 13 **L**
HIRL Rwys 4-22 and 13-31 **L**

35°13'N-101°42'W

RICK HUSBAND AMARILLO INTL (AMA)
RNAV (RNP) Z RWY 13

AMARILLO, TEXAS

AL-19 (FAA)

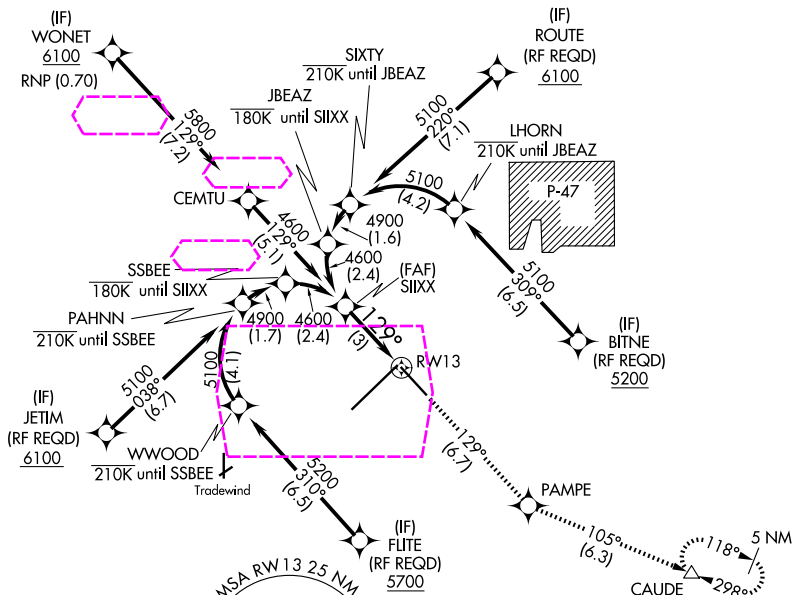
25219

APP CRS	Rwy Ldg	7901
129°	TDZE	3603
	Apt Elev	3607

RNAV (RNP) Z RWY 13

RICK HUSBAND AMARILLO INTL (AMA)

ASR For uncompensated Baro-VNAV systems, procedure NA below -14°C (7°F) or above 51°C (124°F). GPS required.		MISSED APPROACH: Climb to 5400 on track 129° to PAMPE and track 105° to CAUDE and hold.			
ATIS	AMARILLO APP CON★	AMARILLO TOWER★	GND CON	CLNC DEL	UNICOM
118.85 350.3	119.5 307.0	118.3(CTAF) 257.9	121.9 348.6	121.65 239.275	122.95

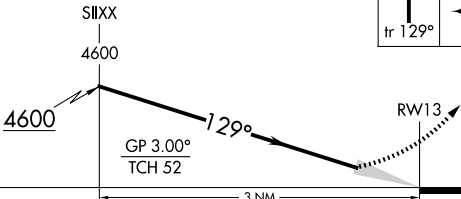


ELEV	3607	TDZE	3603
------	------	------	------

RNAV 1 - GPS or RADAR REQUIRED

See planview for multiple IF locations.

5400	PAMPE	CAUDE
tr 129°	tr 105°	△



CATEGORY	A	B	C	D
RNP 0.30 DA	3976-1¼	373 (400-1¼)		

AUTHORIZATION REQUIRED

AMARILLO, TEXAS
Amdt 1 12OCT17

35°13'N-101°42'W

RICK HUSBAND AMARILLO INTL (AMA)
RNAV (RNP) Z RWY 13