

AMARILLO, TEXAS

AL-19 (FAA)

23334

LOC/DME I-RIQ <b>111.1</b> Chan <b>48</b>	APP CRS <b>214°</b>	Rwy Idg TDZE <b>3606</b> Apt Elev <b>3607</b>
---	------------------------	---

**LDA RWY 22**

RICK HUSBAND AMARILLO INTL (AMA)

RADAR required for procedure entry.

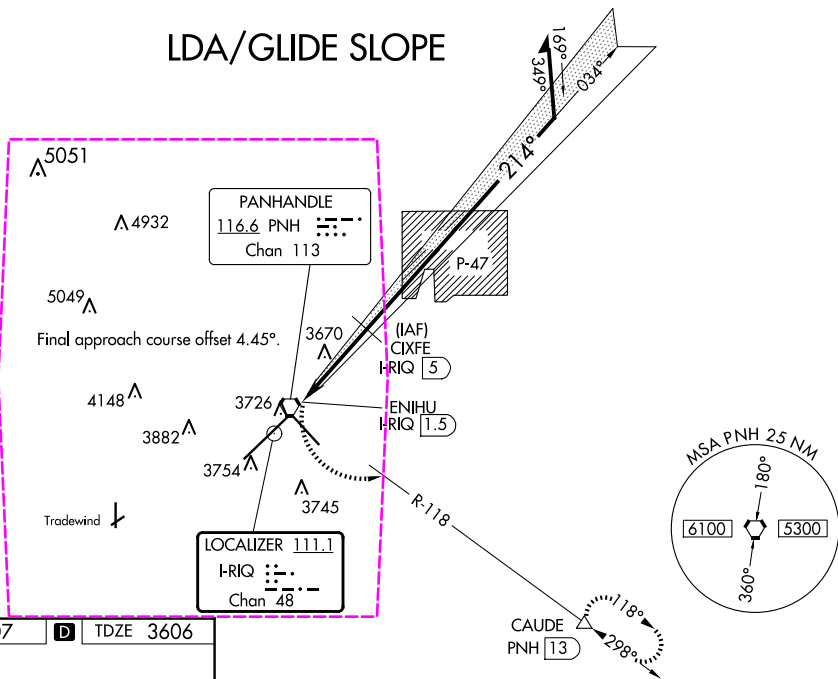
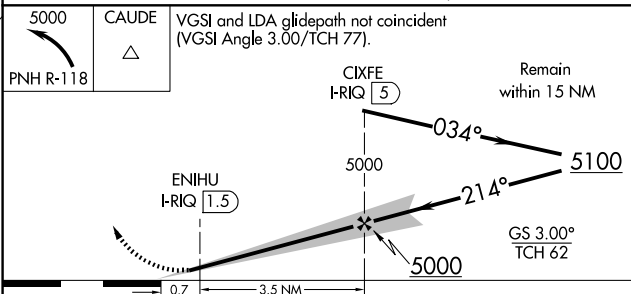
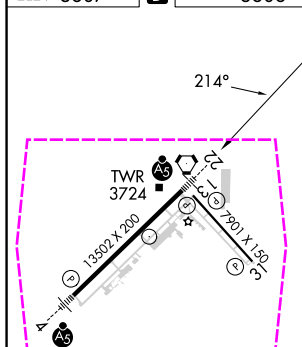
For inop ALS, increase LDA/GS-22 all Cats visibility to  $\frac{3}{4}$  SM; increase LDA-22 Cat C/D/E visibility to  $\frac{7}{8}$  SM. Final approach course offset 4.45 degrees intersects the runway centerline 2509' from Rwy 22 thld.

MALSR



MISSED APPROACH: Climbing left turn to 5000 on PNH VORTAC R-118 to CAUDE and hold.

ATIS <b>118.85 350.3</b>	AMARILLO APP CON★ <b>119.5 307.0</b>	AMARILLO TOWER★ <b>118.3 (CTAF) 257.9</b>	GND CON <b>121.9 348.6</b>	CLNC DEL <b>121.65 239.275</b>	UNICOM <b>122.95</b>
-----------------------------	---	--	-------------------------------	-----------------------------------	-------------------------

**LDA/GLIDE SLOPE**ELEV 3607 **D** TDZE 3606

CATEGORY	A	B	C	D	E
S-LDA/GS 22	3856- $\frac{1}{2}$ 250 (300- $\frac{1}{2}$ )				
S-LDA 22	3920- $\frac{1}{2}$ 314 (400- $\frac{1}{2}$ )		3920- $\frac{3}{4}$ 314 (400- $\frac{3}{4}$ )		
<b>CIRCLING</b>	4080-1 473 (500-1)	4240- $\frac{1}{4}$ 633 (700- $\frac{1}{4}$ )		4280- $\frac{1}{4}$ 673 (700- $\frac{1}{4}$ )	4460-3 853 (900-3)

REIL Rwy 13 **1**  
HIRL Rwy 4-22 and 13-31 **1**

AMARILLO, TEXAS  
Amdt 1D 10AUG23

35°13'N-101°42' W

RICK HUSBAND AMARILLO INTL (AMA)

**LDA RWY 22**

SC-2, 10 JUL 2025 to 07 AUG 2025

SC-2, 10 JUL 2025 to 07 AUG 2025

AMARILLO, TEXAS

AL-19 (FAA)

25219

LOC/DME I-RIQ <b>111.1</b> Chan <b>48</b>	APP CRS <b>214°</b>	Rwy Ldg TDZE <b>3606</b> Apt Elev <b>3607</b>
---	------------------------	---

**LDA RWY 22**

RICK HUSBAND AMARILLO INTL (AMA)

RADAR required for procedure entry.

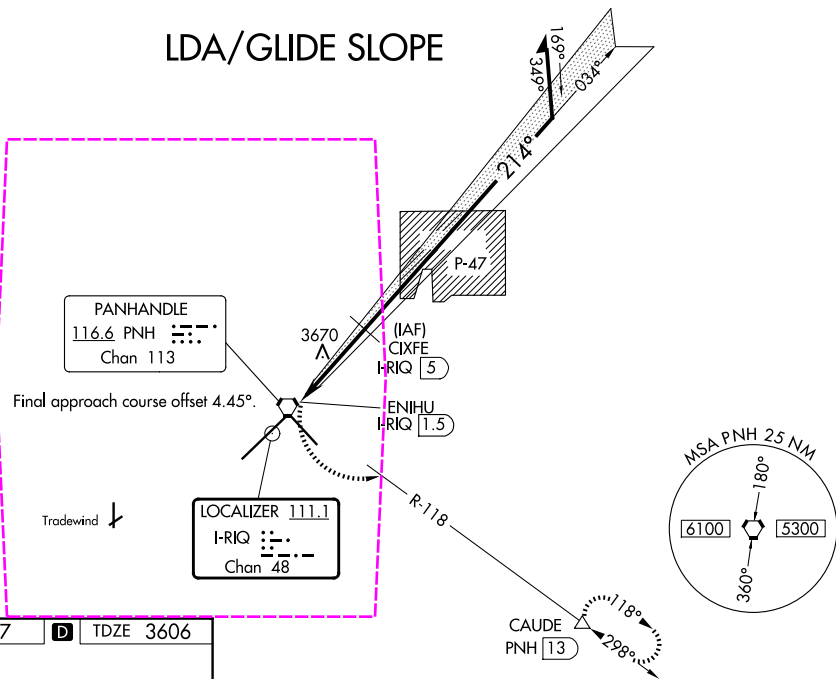
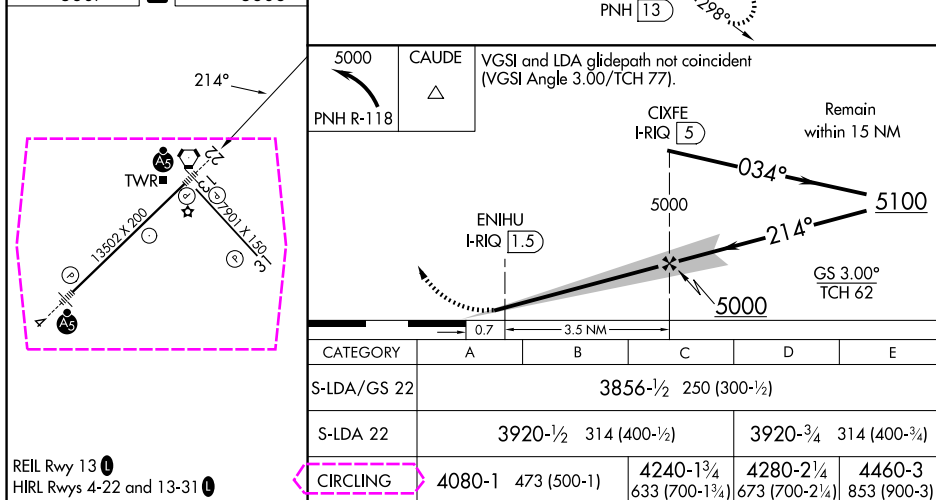
**⚠** For inop ALS, increase LDA/GS-22 all Cats visibility to  $\frac{3}{4}$  SM; increase LDA-22 Cat C/D/E visibility to  $\frac{7}{8}$  SM. Final approach course offset 4.45 degrees intersects the runway centerline 2509' from Rwy 22 thld.

MALSR



**MISSED APPROACH:** Climbing left turn to 5000 on PNH VORTAC R-118 to CAUDE and hold.

ATIS <b>118.85 350.3</b>	AMARILLO APP CON★ <b>119.5 307.0</b>	AMARILLO TOWER★ <b>118.3 (CTAF) 257.9</b>	GND CON <b>121.9 348.6</b>	CLNC DEL <b>121.65 239.275</b>	UNICOM <b>122.95</b>
-----------------------------	---	--	-------------------------------	-----------------------------------	-------------------------

**LDA/GLIDE SLOPE**ELEV 3607 **D** TDZE 3606REIL Rwy 13 **1**HIRL Rwy 4-22 and 13-31 **1**

AMARILLO, TEXAS

Amdt 1D 10AUG23

35°13'N-101°42' W

RICK HUSBAND AMARILLO INTL (AMA)

**LDA RWY 22**

SC-2, 07 AUG 2025 to 04 SEP 2025

SC-2, 07 AUG 2025 to 04 SEP 2025