

AMARILLO, TEXAS

AL-19 (FAA)

23334

LOC I-AMA <b>110.3</b>	APP CRS <b>038°</b>	Rwy Idg <b>13502</b> TDZE <b>3607</b> Apt Elev <b>3607</b>
---------------------------	------------------------	--

ILS or LOC RWY 4  
RICK HUSBAND AMARILLO INTL (AMA)

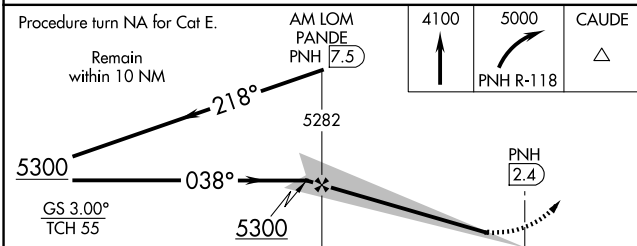
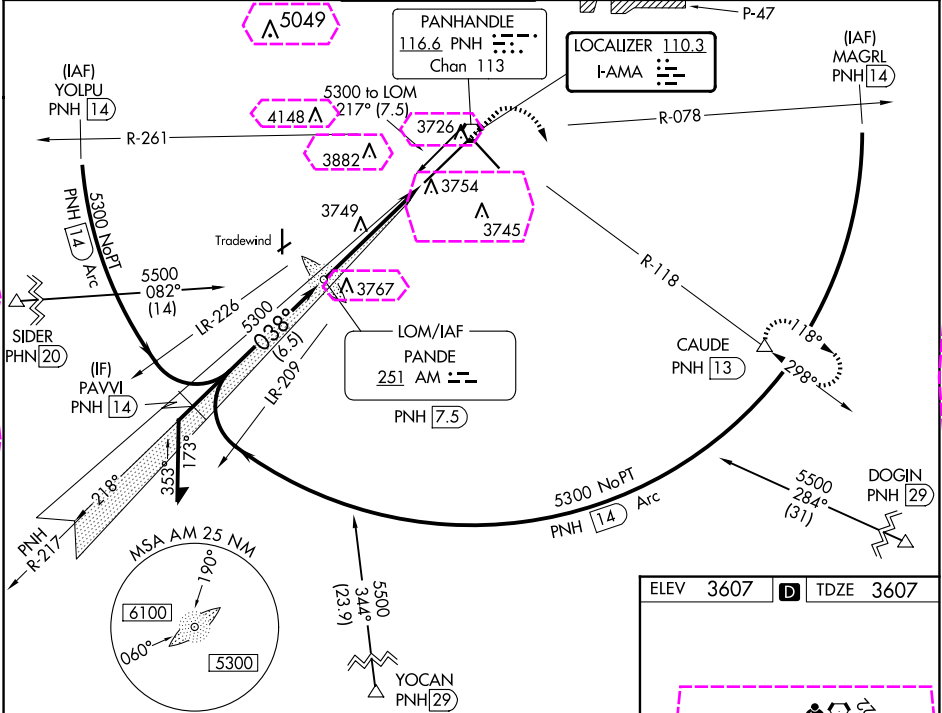
ADF or DME required.

When local altimeter setting not received, use Borger altimeter setting and increase S-ILS 4 DA to 3960 feet and all visibilities to RVR 3000. Increase all MDAs 160 feet and S-LOC 4 visibility Cat C/D/E to RVR 6000 and Circling visibility Cat C/D ½ SM. For inop ALS, increase visibility S-ILS 4 Cat E to 4000 RVR and S-LOC 4 Cat C/D/E to RVR 6000. For inop ALS when using Borger altimeter setting, increase visibility S-ILS 4 all Cats to 5500 and S-LOC 4 Cat C/D/E to 1½ SM. \* RVR 1800 authorized with use of FD or AP or HUD to DA (NA when using Borger altimeter setting).

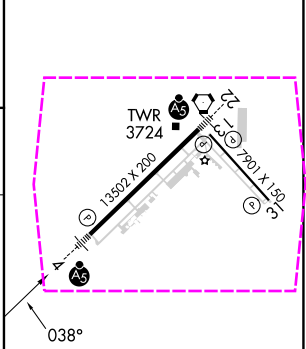
MALSR

MISSED APPROACH:  
Climb to 4100 then climbing right turn to 5000 on PNH VORTAC R-118 to CAUDE/ PNH 13 DME and hold.

ATIS <b>118.85 350.3</b>	AMARILLO APP CON* <b>119.5 307.0</b>	AMARILLO TOWER* <b>118.3(CTAF) 257.9</b>	GND CON <b>121.9 348.6</b>	CLNC DEL <b>121.65 239.275</b>	UNICOM <b>122.95</b>
-----------------------------	---	---	-------------------------------	-----------------------------------	-------------------------



ELEV 3607	TDZE 3607
-----------	-----------



CATEGORY	A	B	C	D	E
S-ILS 4 *	3807/24 200 (200-½)				
S-LOC 4	4000/24	393 (400-½)	4000/35	393 (400-½)	
CIRCLING	4080-1	473 (500-1)	4240-1¾ 633 (700-1¾)	4280-2¼ 673 (700-2¼)	4460-3 853 (900-3)

REIL Rwy 13					
HIRL Rwy 4-22 and 13-31					
FAF to MAP 5 NM					
Knots	60	90	120	150	180
Min:Sec	5:00	3:20	2:30	2:00	1:40

AMARILLO, TEXAS  
Amdt 23 14JUL22

35°13'N-101°42'W

RICK HUSBAND AMARILLO INTL (AMA)  
ILS or LOC RWY 4

AMARILLO, TEXAS

AL-19 (FAA)

25219

LOC I-AMA <b>110.3</b>	APP CRS <b>038°</b>	Rwy Ldg <b>13502</b> TDZE <b>3607</b> Apt Elev <b>3607</b>
---------------------------	------------------------	--

ILS or LOC RWY 4  
RICK HUSBAND AMARILLO INTL (AMA)

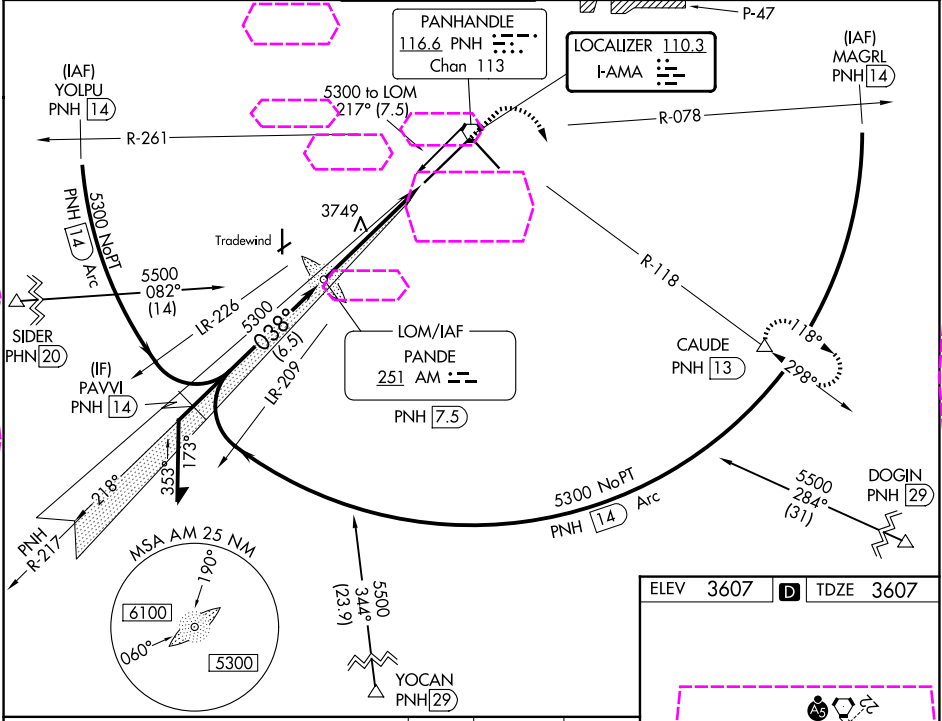
ADF or DME required.

When local altimeter setting not received, use Borger altimeter setting and increase S-ILS 4 DA to 3960 feet and all visibilities to RVR 3000. Increase all MDAs 160 feet and S-LOC 4 visibility Cat C/D/E to RVR 6000 and Circling visibility Cat C/D ½ SM. For inop ALS, increase visibility S-ILS 4 Cat E to 4000 RVR and S-LOC 4 Cat C/D/E to RVR 6000. For inop ALS when using Borger altimeter setting, increase visibility S-ILS 4 all Cats to 5500 and S-LOC 4 Cat C/D/E to 1½ SM. \* RVR 1800 authorized with use of FD or AP or HUD to DA (NA when using Borger altimeter setting).

MALSR

MISSED APPROACH:  
Climb to 4100 then climbing right turn to 5000 on PNH VORTAC R-118 to CAUDE/ PNH 13 DME and hold.

ATIS <b>118.85 350.3</b>	AMARILLO APP CON* <b>119.5 307.0</b>	AMARILLO TOWER* <b>118.3(CTAF) 257.9</b>	GND CON <b>121.9 348.6</b>	CLNC DEL <b>121.65 239.275</b>	UNICOM <b>122.95</b>
-----------------------------	---	---	-------------------------------	-----------------------------------	-------------------------



Procedure turn NA for Cat E.

Remain within 10 NM

AM LOM PANDE PNH 7.5

4100

5000

CAUDE

218°

038°

5300

GS 3.00° TCH 55

5282

5300

PNH 2.4

5 NM

CATEGORY	A	B	C	D	E
S-ILS 4 *	3807/24 200 (200-½)				
S-LOC 4	4000/24	393 (400-½)	4000/35	393 (400-½)	
CIRCLING	4080-1	473 (500-1)	4240-1¾ 633 (700-1¾)	4280-2¼ 673 (700-2¼)	4460-3 853 (900-3)

ELEV 3607 D TDZE 3607

REIL Rwy 13

HIRL Rwy 4-22 and 13-31

FAF to MAP 5 NM

Knots	60	90	120	150	180
Min:Sec	5:00	3:20	2:30	2:00	1:40

AMARILLO, TEXAS  
Amdt 23 14JUL22

35°13'N-101°42'W

RICK HUSBAND AMARILLO INTL (AMA)  
ILS or LOC RWY 4

SC-2, 07 AUG 2025 to 04 SEP 2025

SC-2, 07 AUG 2025 to 04 SEP 2025