

ALAMOSA, COLORADO

AL-18 (FAA)

25163

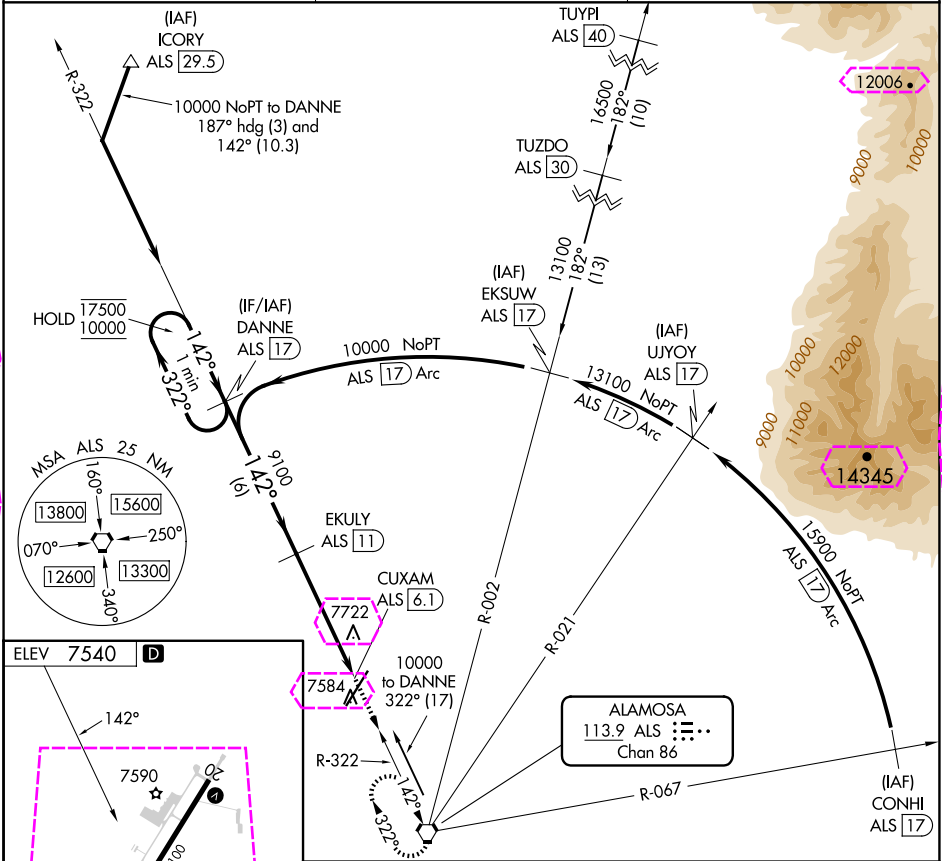
VORTAC ALS <b>113.9</b> Chan <b>86</b>	APP CRS <b>142°</b>	Rwy Ldg TDZE Apt Elev <b>7540</b>	<b>N/A</b> <b>N/A</b> <b>7540</b>
----------------------------------------------	------------------------	--------------------------------------------	-----------------------------------------

VOR-B

SAN LUIS VALLEY RGNL/BERGMAN FLD (ALS)

DME required. RADAR required for arrivals at TUYPI.	MISSED APPROACH: Climb to 11000 direct ALS VORTAC and hold, continue climb-in-hold to 11000.
▼ ❄ -25°C	

ASOS <b>135.175</b>	DENVER CENTER <b>128.375 379.95</b>	UNICOM <b>122.8 (CTAF) 0</b>
------------------------	----------------------------------------	---------------------------------



One Minute Holding Pattern				11000 ALS
CATEGORY	A	B	C	D
<b>CIRCLING</b>	8040-1	500 (500-1)	8080-1½ 540 (600-1½)	8100-2 560 (600-2)

ALAMOSA, COLORADO

Amtd 6 24MAR22

SAN LUIS VALLEY RGNL/BERGMAN FLD (ALS)

37°26'N-105°52'W

VOR-B

SW-1, 10 JUL 2025 to 07 AUG 2025

SW-1, 10 JUL 2025 to 07 AUG 2025

VORTAC ALS <b>113.9</b> Chan <b>86</b>	APP CRS <b>142°</b>	Rwy Ldg TDZE Apt Elev	<b>N/A</b> <b>N/A</b> <b>7540</b>
----------------------------------------------	------------------------	-----------------------------	-----------------------------------------

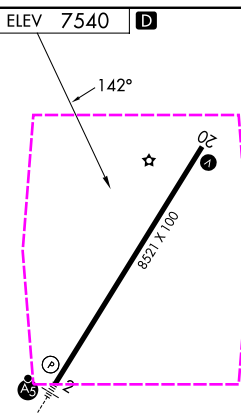
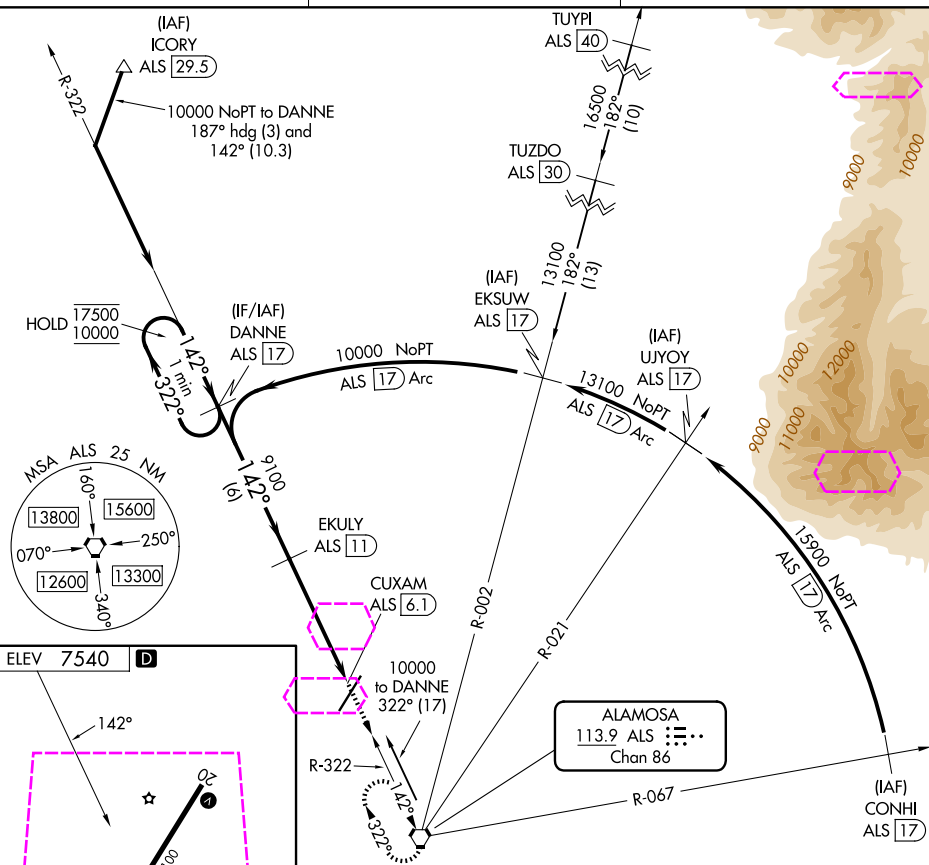
VOR-B

SAN LUIS VALLEY RGNL/BERGMAN FLD (ALS)

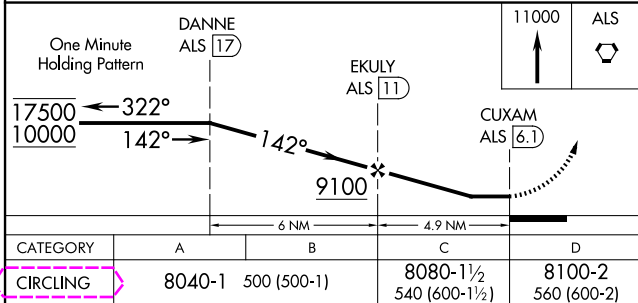
DME required. RADAR required for arrivals at TUYPI.

**MISSED APPROACH:** Climb to 11000 direct ALS VORTAC and hold, continue climb-in-hold to 11000.

 -25°C

ASOS  
135.175DENVER CENTER  
128.375 379.95UNICOM  
122.8 (CTAF) **L**

REIL Rwy 20 **L**  
HIRL Rwy 2-20 **L**



ALAMOSA, COLORADO  
Amdt 6 24MAR22

SAN LUIS VALLEY RGNL/BERGMAN FLD (ALS)

37°26'N-105°52'W

VOR-B

SW-1, 07 AUG 2025 to 04 SEP 2025