

ALAMOSA, COLORADO

AL-18 (FAA)

25163

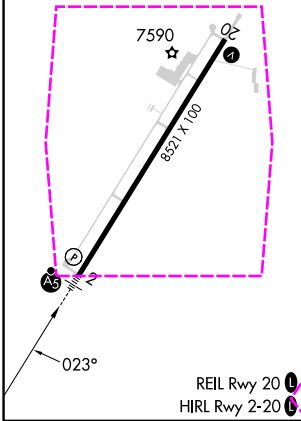
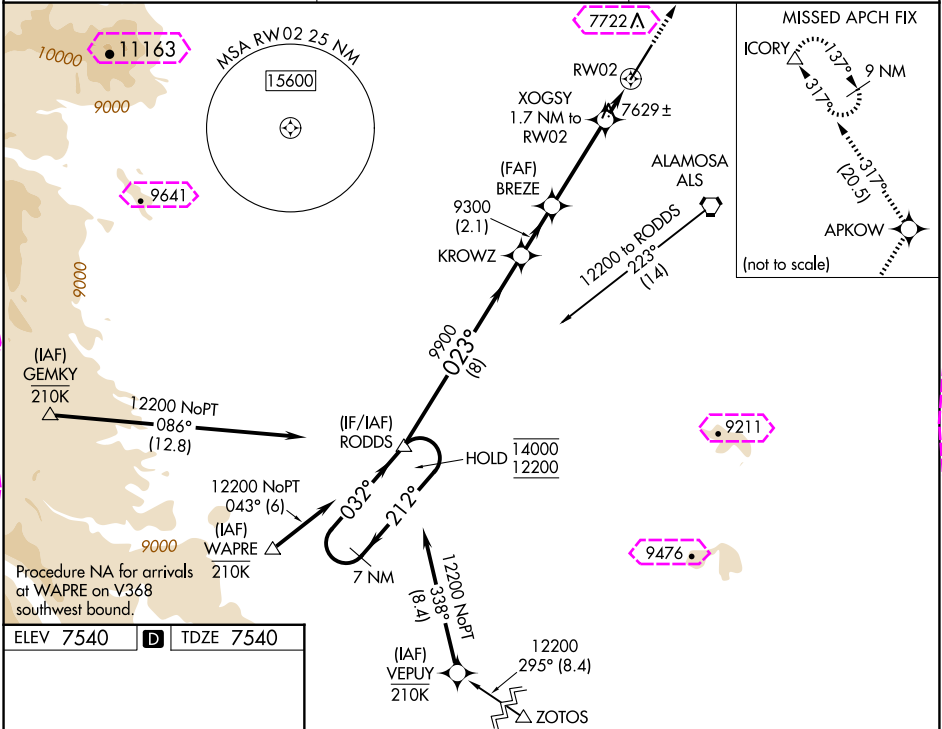
WAAS CH 90410 W02A	APP CRS 023°	Rwy Ldg 8519 TDZE 7540 Apt Elev 7540
--	------------------------	---

RNAV (GPS) RWY 2

SAN LUIS VALLEY RGNL/BERGMAN FLD (ALS)

RNP APCH-GPS. ▼ -25°C For uncompensated Baro-VNAV systems, LNAV/VNAV NA below -31°C or above 54°C. For inop ALS, increase LNAV/VNAV all Cats visibility to ¾ SM.	MALSR AS MISSED APPROACH: Climb to 14600 direct APKOW and on track 317° to ICORY and hold, continue climb-in-hold to 14600.
---	---

ASOS 135.175	DENVER CENTER 128.375 379.95	UNICOM 122.8 (CTAF) 0
------------------------	--	---------------------------------



7 NM Holding Pattern		RODDS		KROWZ		BREZE		14600 ↑		APKOW ✦		fr 317°		ICORY △	
14000 ← 212°		12200 → 032°		023°		9900		9300		XOGSY 1.7 NM to RW02		0.9 NM to RW02		RW02 ↗	
GP 3.00° TCH 48				8 NM		2.1 NM		3.6 NM		0.8 NM		0.9 NM			
CATEGORY		A		B		C		D							
LPV DA				7740-½		200 (200-½)									
LNAV/VNAV DA				7790-½		250 (300-½)									
LNAV MDA				7880-½		340 (400-½)									
CIRCLING		8040-1		500 (500-1)		8080-1½ 540 (600-1½)		8100-2 560 (600-2)							

ALAMOSA, COLORADO
Amdt 2 24MAR22

SAN LUIS VALLEY RGNL/BERGMAN FLD (ALS)
37°26'N-105°52'W
RNAV (GPS) RWY 2

SW-1, 10 JUL 2025 to 07 AUG 2025

SW-1, 10 JUL 2025 to 07 AUG 2025

ALAMOSA, COLORADO

AL-18 (FAA)

25219

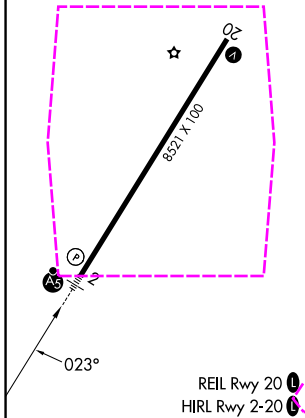
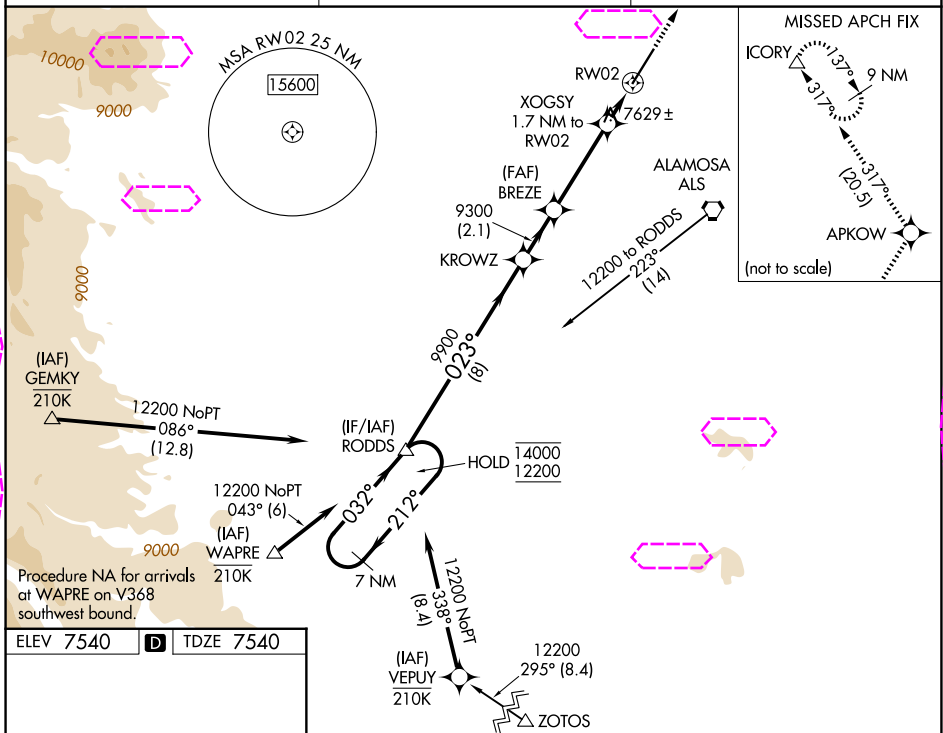
WAAS CH 90410 W02A	APP CRS 023°	Rwy Ldg 8519 TDZE 7540 Apt Elev 7540
--	------------------------	---

RNAV (GPS) RWY 2

SAN LUIS VALLEY RGNL/BERGMAN FLD (ALS)

RNP APCH-GPS. ▼ -25°C For uncompensated Baro-VNAV systems, LNAV/VNAV NA below -31°C or above 54°C. For inop ALS, increase LNAV/VNAV all Cats visibility to ¾ SM.	MALSR AS MISSED APPROACH: Climb to 14600 direct APKOW and on track 317° to ICORY and hold, continue climb-in-hold to 14600.
---	---

ASOS 135.175	DENVER CENTER 128,375 379.95	UNICOM 122.8 (CTAF) 0
------------------------	--	---------------------------------



7 NM Holding Pattern	RODDS	KROWZ	BREZE	14600	APKOW	ICORY
14000	12200	9900	9300	8140	8080-1½	8100-2
GP 3.00°	TCH 48	8 NM	2.1 NM	3.6 NM	0.8 NM	0.9 NM
CATEGORY	A	B	C	D		
LPV DA		7740-½	200 (200-½)			
LNAV/VNAV DA		7790-½	250 (300-½)			
LNAV MDA		7880-½	340 (400-½)			
CIRCLING	8040-1	500 (500-1)	8080-1½	8100-2		
			540 (600-1½)	560 (600-2)		

ALAMOSA, COLORADO
Amdt 2 24MAR22

SAN LUIS VALLEY RGNL/BERGMAN FLD (ALS)
37°26'N-105°52'W

RNAV (GPS) RWY 2

SW-1, 07 AUG 2025 to 04 SEP 2025

SW-1, 07 AUG 2025 to 04 SEP 2025