

ALAMOSA, COLORADO

AL-18 (FAA)

25163

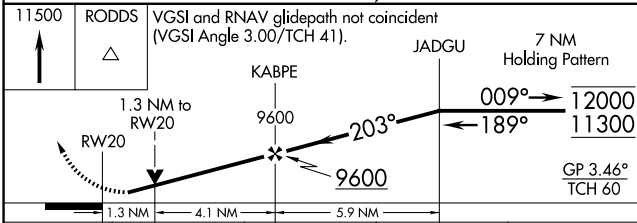
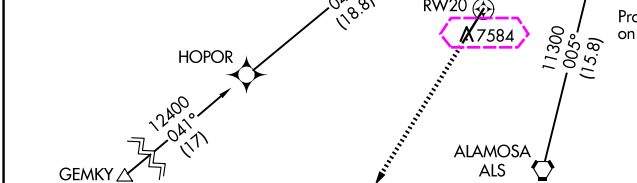
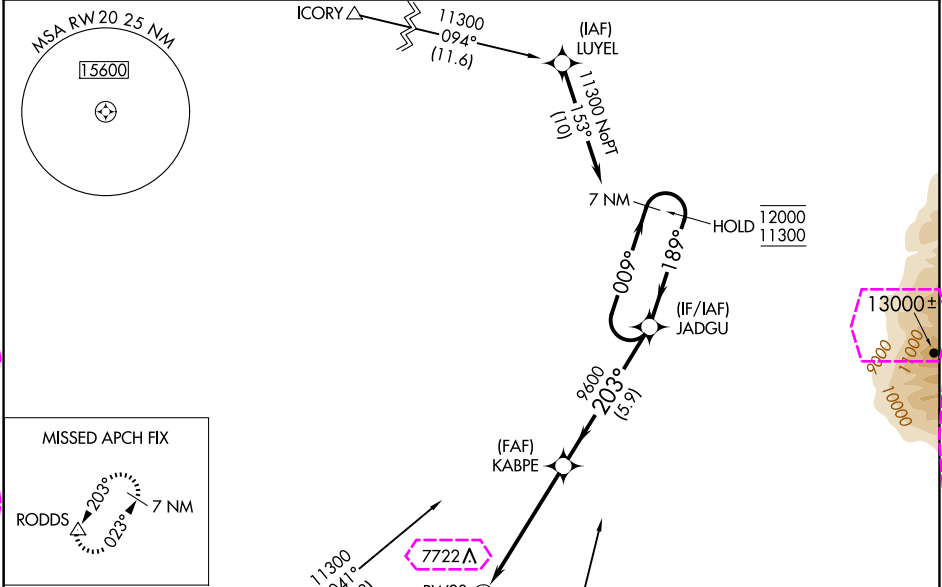
WAAS CH <b>93500</b> <b>W20A</b>	APP CRS <b>203°</b>	Rwy Ldg TDZE Apt Elev	<b>8519</b> <b>7540</b> <b>7540</b>
--	------------------------	-----------------------------	---

# RNAV (GPS) RWY 20

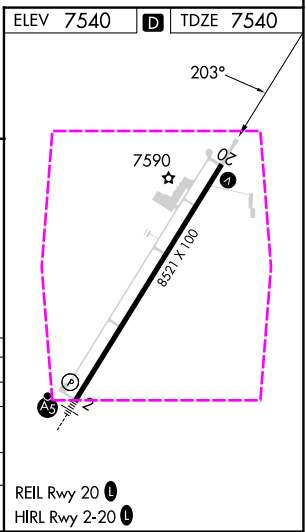
SAN LUIS VALLEY RGNL/BERGMAN FLD (ALS)

RNP APCH-GPS.	MISSED APPROACH: Climb to 11500 direct RODDS and hold, continue climb-in-hold to 11500.
-25°C	Rwy 20 helicopter visibility reduction below ¾ SM NA. For uncompensated Baro-VNAV systems, LNAV/VNAV NA below -31°C or above 54°C.

ASOS <b>135.175</b>	DENVER CENTER <b>128.375 379.95</b>	UNICOM <b>122.8 (CTAF) 0</b>
------------------------	--	---------------------------------



CATEGORY	A	B	C	D
LPV DA		7812-7/8	272 (300-7/8)	
LNAV/VNAV DA		7810-7/8	270 (300-7/8)	
LNAV MDA	8000-1	460 (500-1)	8000-1 3/8	460 (500-1 3/8)
CIRCLING	8040-1	500 (500-1)	8080-1 1/2	8100-2
			540 (600-1 1/2)	560 (600-2)



ALAMOSA, COLORADO  
Amdt 2 24MAR22

SAN LUIS VALLEY RGNL/BERGMAN FLD (ALS)  
37°26'N-105°52'W  
**RNAV (GPS) RWY 20**

SW-1, 10 JUL 2025 to 07 AUG 2025

SW-1, 10 JUL 2025 to 07 AUG 2025

ALAMOSA, COLORADO

AL-18 (FAA)

25219

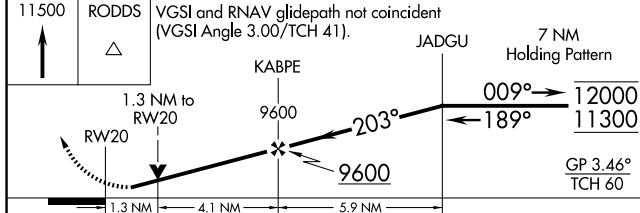
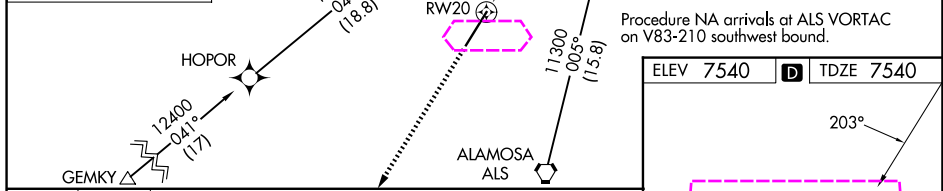
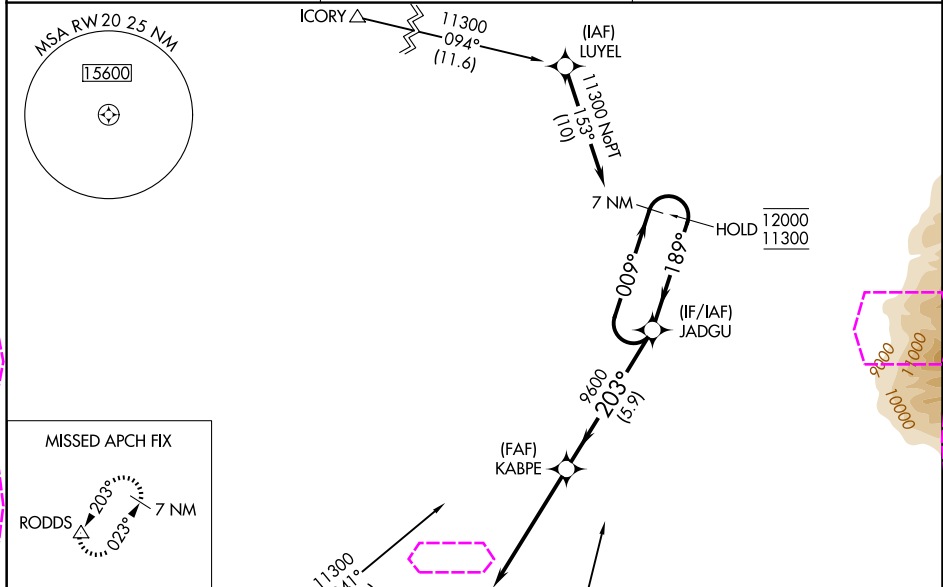
WAAS CH <b>93500</b> <b>W20A</b>	APP CRS <b>203°</b>	Rwy Ldg TDZE Apt Elev	<b>8519</b> <b>7540</b> <b>7540</b>
--	------------------------	-----------------------------	---

# RNAV (GPS) RWY 20

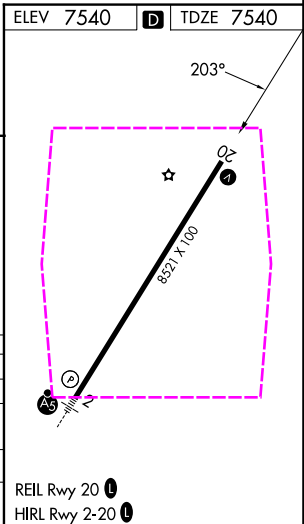
SAN LUIS VALLEY RGNL/BERGMAN FLD (ALS)

RNP APCH-GPS.	MISSED APPROACH: Climb to 11500 direct RODDS and hold, continue climb-in-hold to 11500.
Rwy 20 helicopter visibility reduction below ¾ SM NA. For uncompensated Baro-VNAV systems, LNAV/VNAV NA below -31°C or above 54°C.	

ASOS <b>135.175</b>	DENVER CENTER <b>128.375 379.95</b>	UNICOM <b>122.8 (CTAF) 0</b>
------------------------	--	---------------------------------



CATEGORY	A	B	C	D
LPV DA		7812-7/8	272 (300-7/8)	
LNAV/VNAV DA		7810-7/8	270 (300-7/8)	
LNAV MDA	8000-1	460 (500-1)	8000-1 3/8	460 (500-1 3/8)
CIRCLING	8040-1	500 (500-1)	8080-1 1/2	8100-2
			540 (600-1 1/2)	560 (600-2)



ALAMOSA, COLORADO  
Amdt 2 24MAR22

SAN LUIS VALLEY RGNL/BERGMAN FLD (ALS)  
37°26'N-105°52'W  
**RNAV (GPS) RWY 20**

SW-1, 07 AUG 2025 to 04 SEP 2025

SW-1, 07 AUG 2025 to 04 SEP 2025