

ALAMOSA, COLORADO

AL-18 (FAA)

25219

LOC I-VQR 111.9	APP CRS 023°	Rwy Ldg 8519 TDZE 7540 Apt Elev 7540
---------------------------	------------------------	--

ILS or LOC RWY 2

SAN LUIS VALLEY RGNL/BERGMAN FLD (ALS)

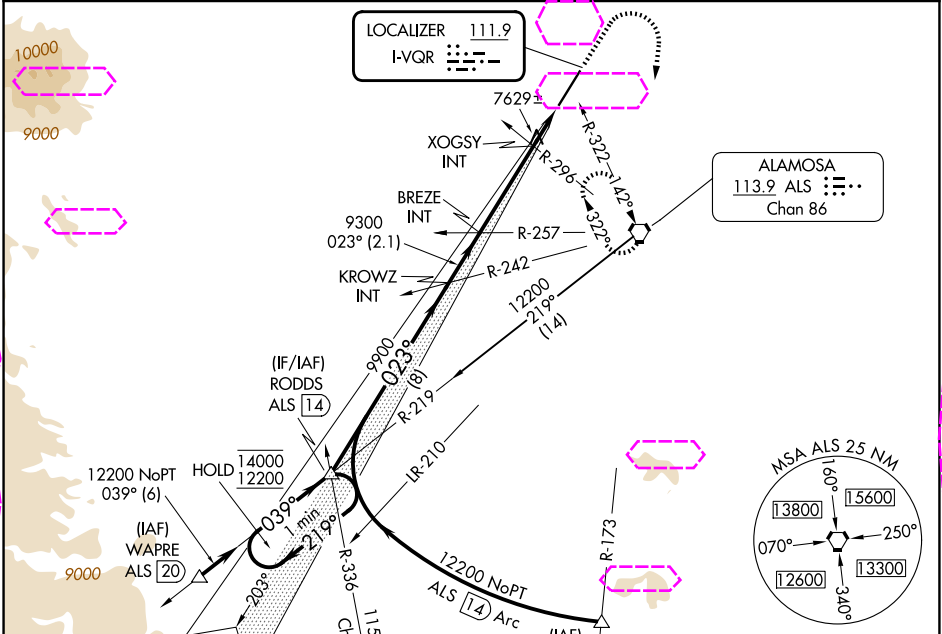
NA For inop ALS, increase S-LOC 2 Cats C/D visibility to 1½ SM.

-25°C

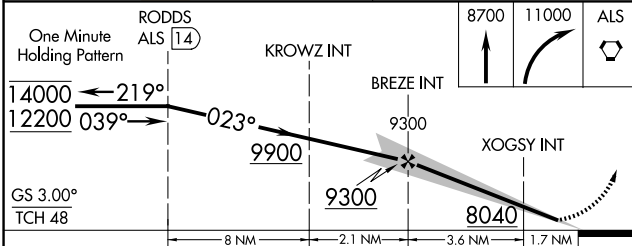
MALSR

MISSED APPROACH: Climb to 8700 then climbing right turn to 11000 direct ALS VORTAC and hold, continue climb in hold to 11000.

ASOS 135.175	DENVER CENTER 128.375 379.95	UNICOM 122.8 (CTAF) 1
------------------------	--	---------------------------------



Procedure NA for arrivals at WAPRE on V368 southwest bound.



CATEGORY	A	B	C	D
S-ILS 2	7740-½ 200 (200-½)			
S-LOC 2	8040-½ 500 (500-½)		8040-1 500 (500-1)	
CIRCLING	8040-1 500 (500-1)		8080-1½ 540 (600-1½)	8100-2 560 (600-2)
XOGSY FIX MINIMUMS (DUAL VOR RECEIVERS REQUIRED)				
S-LOC 2	7880-½ 340 (400-½)			
CIRCLING	8040-1 500 (500-1)		8080-1½ 540 (600-1½)	8100-2 560 (600-2)

