

ALLIANCE, NEBRASKA

AL-16 (FAA)

24305

VOR/DME AIA 111.8 Chan 55	APP CRS 314°	Rwy Idg 9203 TDZE 3927 Apt Elev 3931
---	------------------------	---

VOR RWY 30
ALLIANCE MUNI (AIA)

A For inop ALS, increase S-30 Cats A/B visibility to 1 SM and S-30 Cats C/D visibility to 1½ SM.

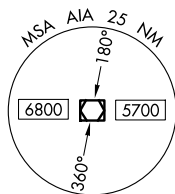
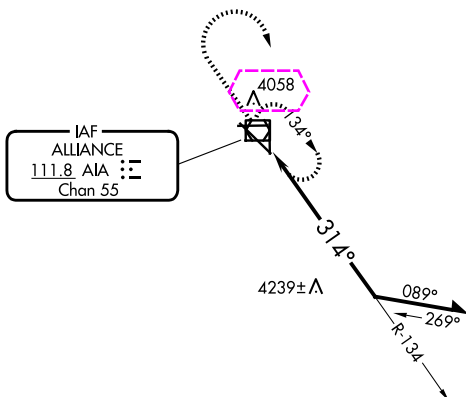


MISSED APPROACH: Climb to 5700 then right turn direct AIA VOR/DME and hold.

ASOS
135.075

DENVER CENTER
127.95 338.2

UNICOM
123.0 (CTAF) **1**



5749

5700

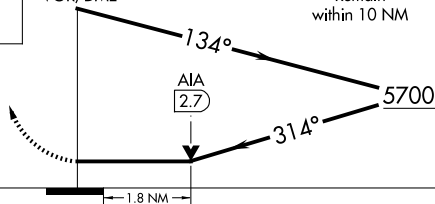


AIA



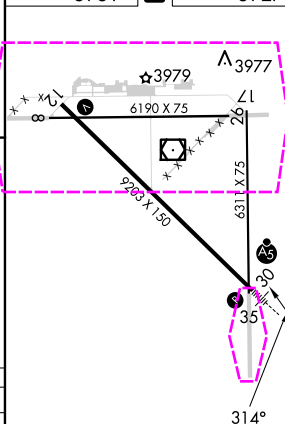
AIA
VOR/DME

Remain
within 10 NM



CATEGORY	A	B	C	D
S-30	4540-¾ 613 (700-¾)		4540-1⅞ 613 (700-1⅞)	4540-1½ 613 (700-1½)
CIRCLING	4540-1 609 (700-1)		4580-1¾ 649 (700-1¾)	4640-2¼ 709 (800-2¼)

ELEV 3931 **D** TDZE 3927



REIL Rwy 12 **1**

MIRL Rwy 8-26 and 12-30 **1**

ALLIANCE, NEBRASKA
Amdt 3B 09SEP21

42°03'N-102°48'W

ALLIANCE MUNI (AIA)
VOR RWY 30

NC-2, 10 JUL 2025 to 07 AUG 2025

NC-2, 10 JUL 2025 to 07 AUG 2025

ALLIANCE, NEBRASKA

AL-16 (FAA)

25219

VOR/DME AIA 111.8 Chan 55	APP CRS 314°	Rwy Ldg 9203 TDZE 3927 Apt Elev 3931
---	------------------------	---

VOR RWY 30
ALLIANCE MUNI (AIA)

A For inop ALS, increase S-30 Cats A/B visibility to 1 SM and S-30 Cats C/D visibility to 1 3/4 SM.	MALSR	MISSED APPROACH: Climb to 5700 then right turn direct AIA VOR/DME and hold.
--	-------	---

ASOS 135.075	DENVER CENTER 127.95 338.2	UNICOM 123.0 (CTAF) 1
------------------------	--------------------------------------	--

