

ALLIANCE, NEBRASKA

AL-16 (FAA)

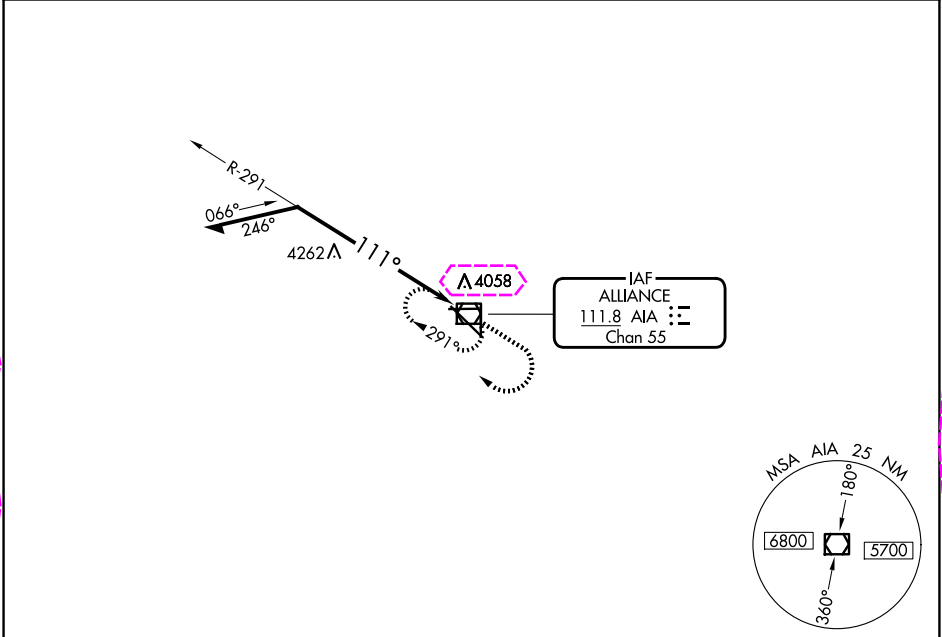
24305

VOR/DME AIA 111.8 Chan 55	APP CRS 111°	Rwy Idg 9203 TDZE 3930 Apt Elev 3931
---	------------------------	---

VOR RWY 12
ALLIANCE MUNI (AIA)

▲ MISSED APPROACH: Climb to 5800 then right turn direct AIA VOR/DME and hold.

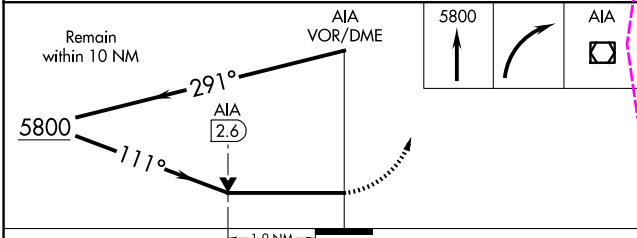
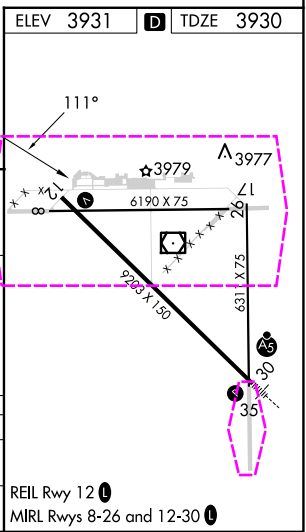
ASOS 135.075	DENVER CENTER 127.95 338.2	UNICOM 123.0 (CTAF) 1
------------------------	--------------------------------------	---------------------------------



NC-2, 10 JUL 2025 to 07 AUG 2025

NC-2, 10 JUL 2025 to 07 AUG 2025

5749 A



CATEGORY	A	B	C	D
S-12	4580-1 650 (700-1)		4580-1 650 (700-1 7/8)	4580-2 650 (700-2)
CIRCLING	4580-1 649 (700-1)		4580-1 649 (700-1 7/8)	4640-2 709 (800-2 1/4)

ALLIANCE, NEBRASKA
Amdt 3D 09SEP21

42°03'N-102°48'W

ALLIANCE MUNI (AIA)
VOR RWY 12

ALLIANCE, NEBRASKA

AL-16 (FAA)

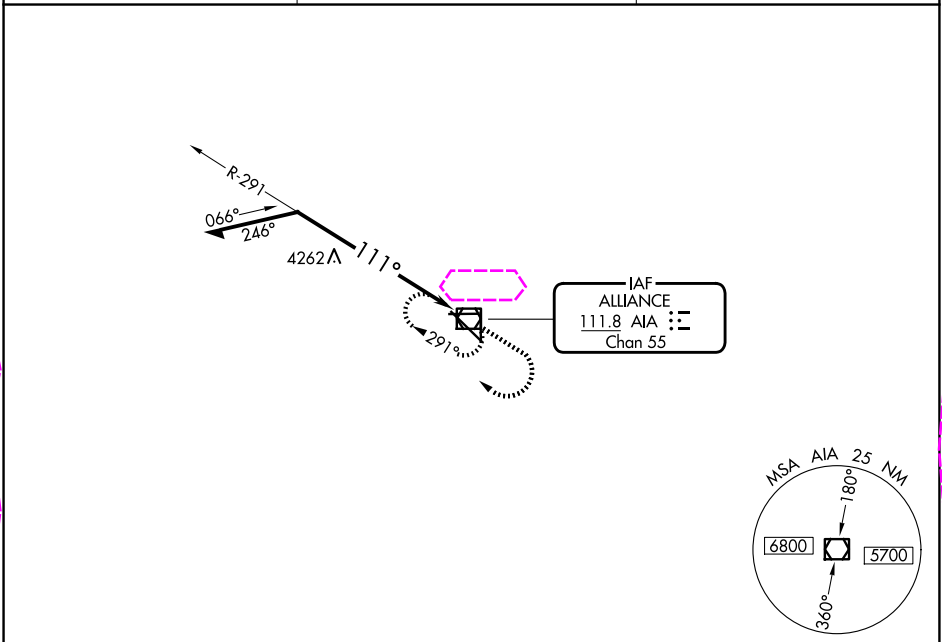
25219

VOR/DME AIA 111.8 Chan 55	APP CRS 111°	Rwy Ldg TDZE 3930 Apt Elev 3931
---	------------------------	---

VOR RWY 12
ALLIANCE MUNI (AIA)

A MISSED APPROACH: Climb to 5800 then right turn direct AIA VOR/DME and hold.

ASOS 135.075	DENVER CENTER 127.95 338.2	UNICOM 123.0 (CTAF) 1
------------------------	--------------------------------------	---------------------------------



Remain within 10 NM

5800

291°

111°

AIA VOR/DME

AIA 2.6

1.9 NM

ELEV 3931 **D** TDZE 3930

111°

12

6190 X 75

26

6311 X 75

30

35

9203 X 150

CATEGORY	A	B	C	D
S-12	4580-1 650 (700-1)		4580-1 650 (700-1 7/8)	4580-2 650 (700-2)
CIRCLING	4580-1 649 (700-1)		4580-1 649 (700-1 7/8)	4640-2 709 (800-2 1/4)

REIL Rwy 12 **1**
MIRL Rwy 8-26 and 12-30 **1**

NC-2, 07 AUG 2025 to 04 SEP 2025

NC-2, 07 AUG 2025 to 04 SEP 2025